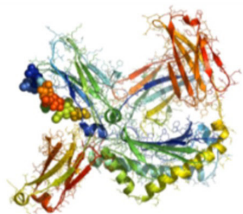


# Workflow for Level 3 *N*-glycan Site Occupancy Analysis



Glycoprotein

## Include process controls

- Well characterised glycoprotein and glycopeptide standard
  - Ludger human IgG positive control [GCP-IGG-100U],
  - KVANKT-A2G2S2 glycopeptide [BQ-GPEP-A2G2S2-10U]
- Formulation buffer – negative control

## Include system suitability, reference and calibration standards

Reduction/  
alkylation and  
protease digestion

PNGase F release in  
presence of  $O^{18}$  water

MALDI-MS or  
nano-LC-MS  
Analysis of glycopeptides