



## Certificate of Analysis

---

### LudgerSep R2 HPLC Column for Glycan Analysis

Cat. #: LS-R2-4.6x150

Batch #: B5CM-10

Size: 4.6 x 150 mm

---

This column conforms to the specifications given in Ludger document # LS-R2-GUIDE.

**Packed Solvent** 60 % acetonitrile (aq)

#### Test Analysis

**Flow Rate** 1.25 ml / min

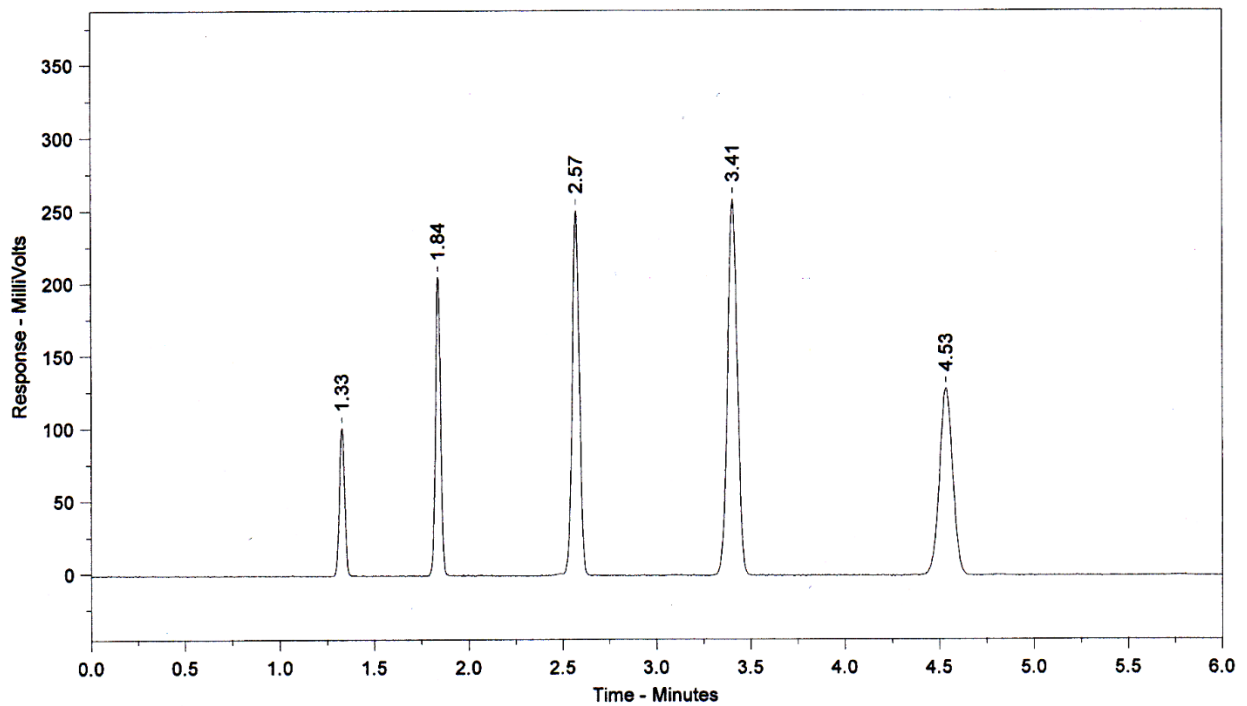
**Eluent** Isocratic 60 % acetonitrile (aq)

**Pressure** 1935 psi

**Temperature** Ambient

**Sample Volume** 2.5  $\mu$ l

**Detection** UV at 254nm



Peak No	Peak Name	Retention time (minutes)	Tailing Factor (5%)
1	Theophylline	1.33	1.04
2	p-Nitroaniline	1.84	1.02
3	Methyl Benzoate	2.57	0.98
4	Phenetole	3.41	0.96
5	o-Xylene	4.53	1.01

Efficiency o-Xylene (n/m) = 132433

Asymmetry Factor (5%) o-Xylene = 1.01