



Certificate of Analysis

LudgerSep R2 HPLC Column for Glycan Analysis

Cat. #: LS-R2-4.6x150

Batch #: B5CM-09

Size: 4.6 x 150 mm

This column conforms to the specifications given in Ludger document # LS-R2-GUIDE.

Packed Solvent 60 % acetonitrile (aq)

Test Analysis

Flow Rate 1.25 ml / min

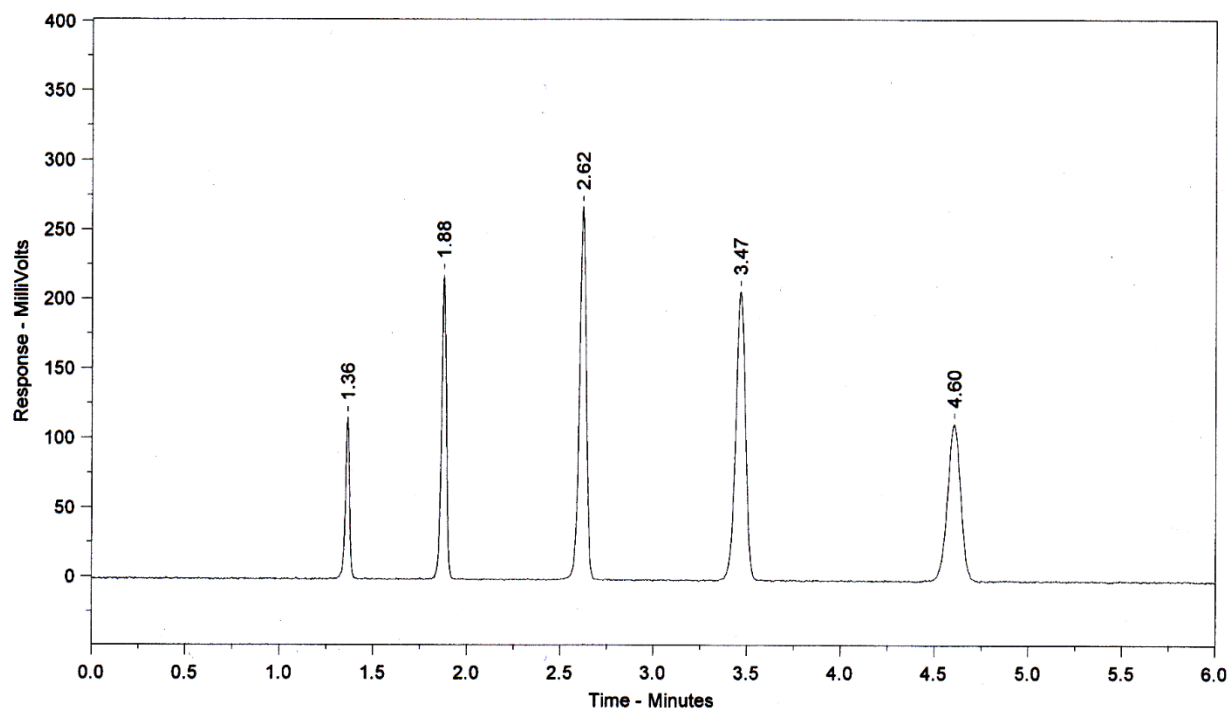
Eluent Isocratic 60 % acetonitrile (aq)

Pressure 1915 psi

Temperature Ambient

Sample Volume 2.5 μ l

Detection UV at 254nm



Peak No	Peak Name	Retention time (minutes)	Tailing Factor (5%)
1	Theophyline	1.36	0.89
2	p-Nitroaniline	1.88	0.94
3	Methyl Benzoate	2.62	0.95
4	Phenetole	3.47	0.94
5	o-Xylene	4.60	0.99

Efficiency o-Xylene (n/m) = 137426

Asymmetry Factor (5%) o-Xylene = 0.99