



## Certificate of Analysis

---

### LudgerSep R2 HPLC Column for Glycan Analysis

Cat. # : LS-R2-4.6x150

Batch # : B26D-01

Size : 4.6 x 150 mm

---

This column conforms to the specifications given in Ludger document # LS-R2-GUIDE.

**Packed Solvent**      60 % acetonitrile (aq)

#### Test Analysis

**Flow Rate**            1.25 ml / min

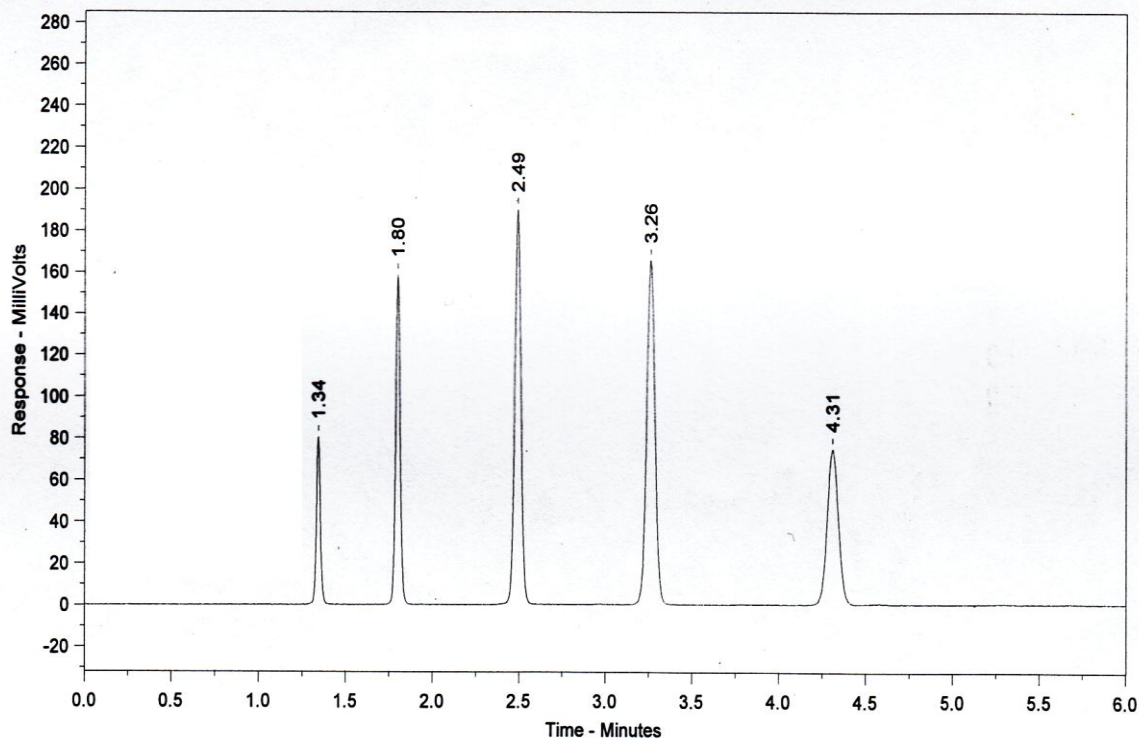
**Eluent**                Isocratic 60 % acetonitrile (aq)

**Pressure**             1680 psi

**Temperature**        Ambient

**Sample Volume**     2.5  $\mu$ l

**Detection**            UV at 254nm



<b>Peak No</b>	<b>Peak Name</b>	<b>Retention time (minutes)</b>	<b>Tailing Factor (5%)</b>
1	Theophylline	1.34	1.07
2	p-Nitroaniline	1.80	1.08
3	Methyl Benzoate	2.49	1.01
4	Phenetole	3.26	1.01
5	o-Xylene	4.31	1.05

**Efficiency o-Xylene (n/m) = 142357**

**Asymmetry Factor (5%) o-Xylene = 1.05**