

## Certificate of Analysis

### LudgerSep™ R1 HPLC Column for Glycan Analysis

Cat. #: LS-R1-4.6x150

Batch: B96K-02

Size: 4.6 x 150 mm

This column conforms to the specifications given in Ludger document # LS-R1-GUIDE.

**Packed Solvent** 60 % acetonitrile (aq)

#### Test Analysis

**Flow Rate** 1.25 ml / min

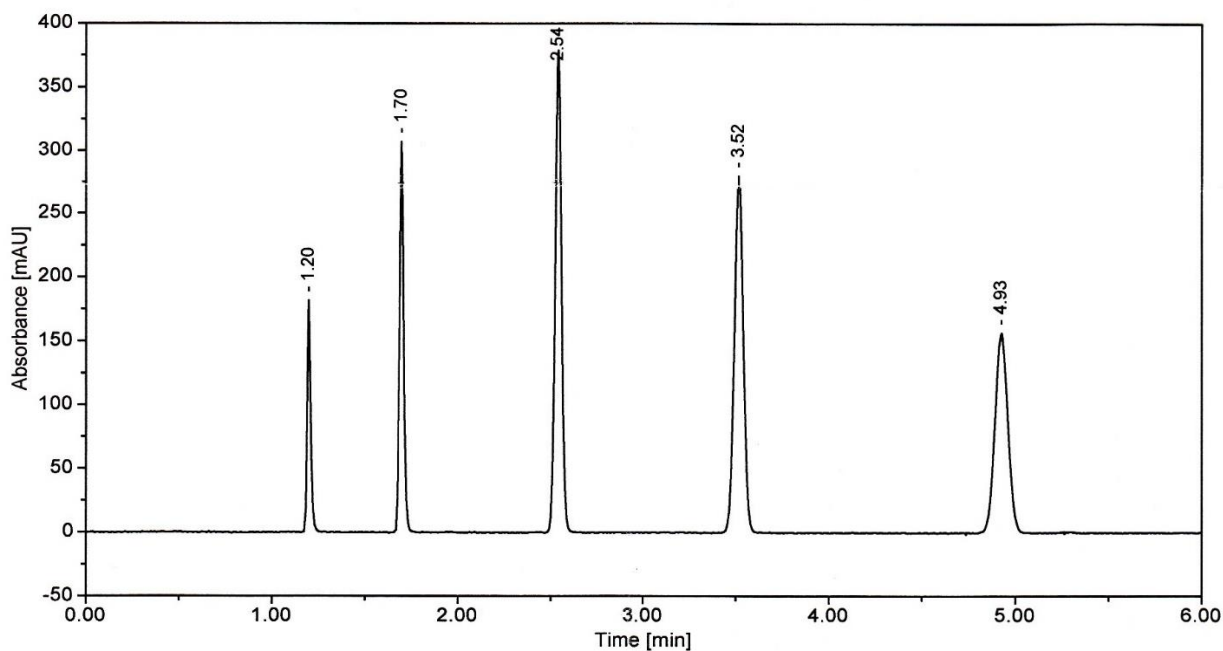
**Eluent** Isocratic 60 % acetonitrile (aq)

**Pressure** 2085 psi

**Temperature** Ambient

**Sample Volume** 2.5 µl

**Detection** UV at 254nm



Peak No	Peak Name	Retention time (minutes)	Capacity Factor
1	Theophylline	1.20	0.00
2	p-Nitroaniline	1.70	0.42
3	Methyl Benzoate	2.54	1.12
4	Phenetole	3.52	1.93
5	o-Xylene	4.93	3.11

**Efficiency o-Xylene (n/m) = 159540**