



## Certificate of Analysis

# LudgerSep™ R1 HPLC Column for Glycan Analysis

Cat. #: LS-R1-4.6x150

Batch: B88E-02

Size: 4.6 x 150 mm

This column conforms to the specifications given in Ludger document # LS-R1-GUIDE.

**Packed Solvent** 60 % acetonitrile (aq)

### Test Analysis

**Flow Rate** 1.25 ml / min

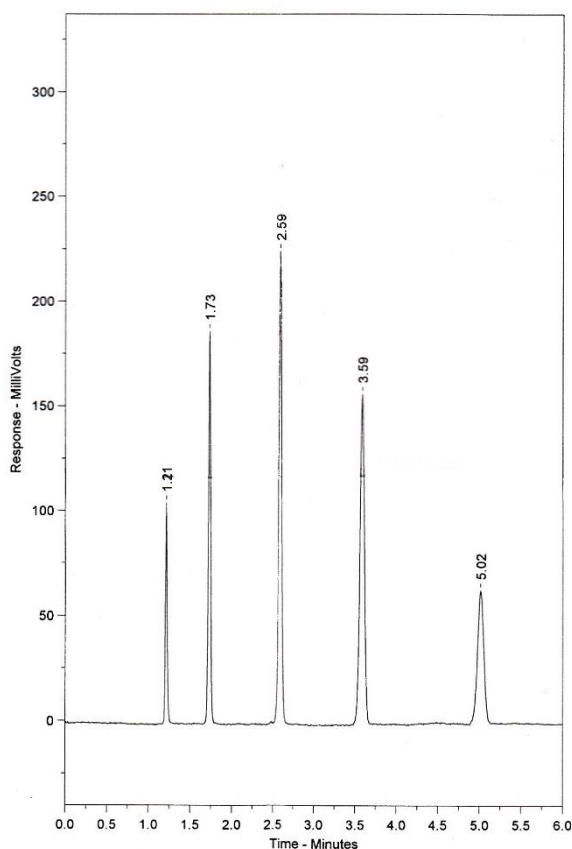
**Eluent** Isocratic 60 % acetonitrile (aq)

**Pressure** 2522 psi

**Temperature** Ambient

**Sample Volume** 5 µl

**Detection** UV at 254nm



Peak No	Peak Name	Retention time (minutes)	Capacity Factor
1	Theophylline	1.21	0.00
2	p-Nitroaniline	1.73	0.43
3	Methyl Benzoate	2.59	1.13
4	Phenetole	3.59	1.96
5	o-Xylene	5.02	3.13

Efficiency o-Xylene (n/m) = 139815

Asymmetry Factor (10%) o-Xylene = 0.948