



## Certificate of Analysis

# LudgerSep™ R1 HPLC Column for Glycan Analysis

Cat. #: LS-R1-4.6x150

Batch: B85L-06

Size: 4.6 x 150 mm

This column conforms to the specifications given in Ludger document # LS-R1-GUIDE.

**Packed Solvent** 60 % acetonitrile (aq)

### Test Analysis

**Flow Rate** 1.25 ml / min

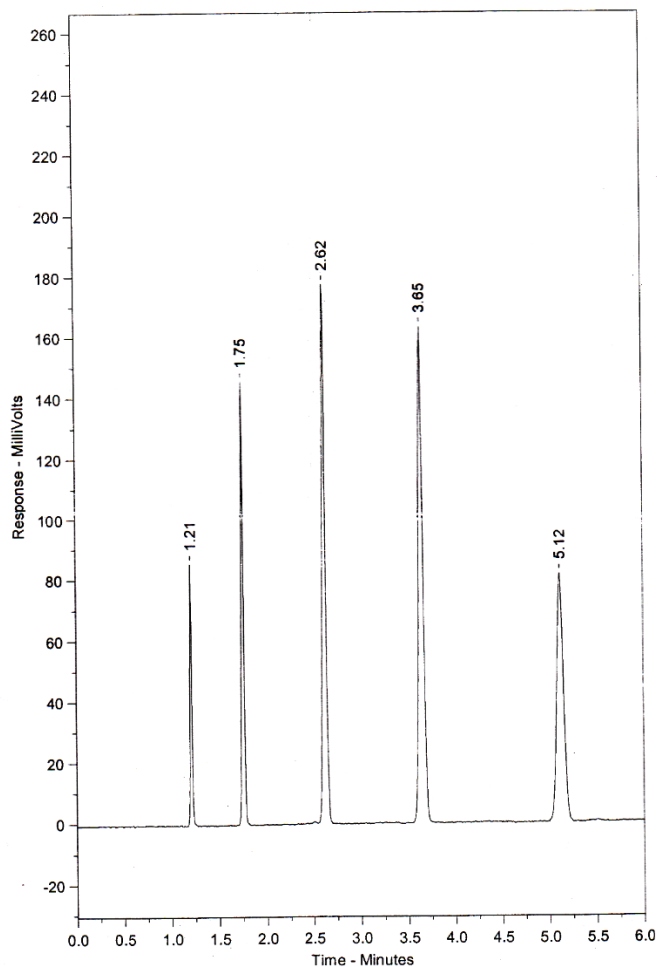
**Eluent** Isocratic 60 % acetonitrile (aq)

**Pressure** 2586 psi

**Temperature** Ambient

**Sample Volume** 5 µl

**Detection** UV at 254nm



Peak No	Peak Name	Retention time (minutes)	Capacity Factor
1	Theophylline	1.21	0.00
2	p-Nitroaniline	1.75	0.45
3	Methyl Benzoate	2.62	1.17
4	Phenetole	3.65	2.02
5	o-Xylene	5.12	3.24

Efficiency o-Xylene (n/m) = 150887

Asymmetry Factor (10%) o-Xylene = 1.005