



## Certificate of Analysis

---

### LudgerSep R1 HPLC Column for Glycan Analysis

Cat. #: LS-R1-4.6x150

Batch #: B6CC-03

Size: 4.6 x 150 mm

---

This column conforms to the specifications given in Ludger document # LS-R1-GUIDE.

**Packed Solvent** 60 % acetonitrile (aq)

#### Test Analysis

**Flow Rate** 1.25 ml / min

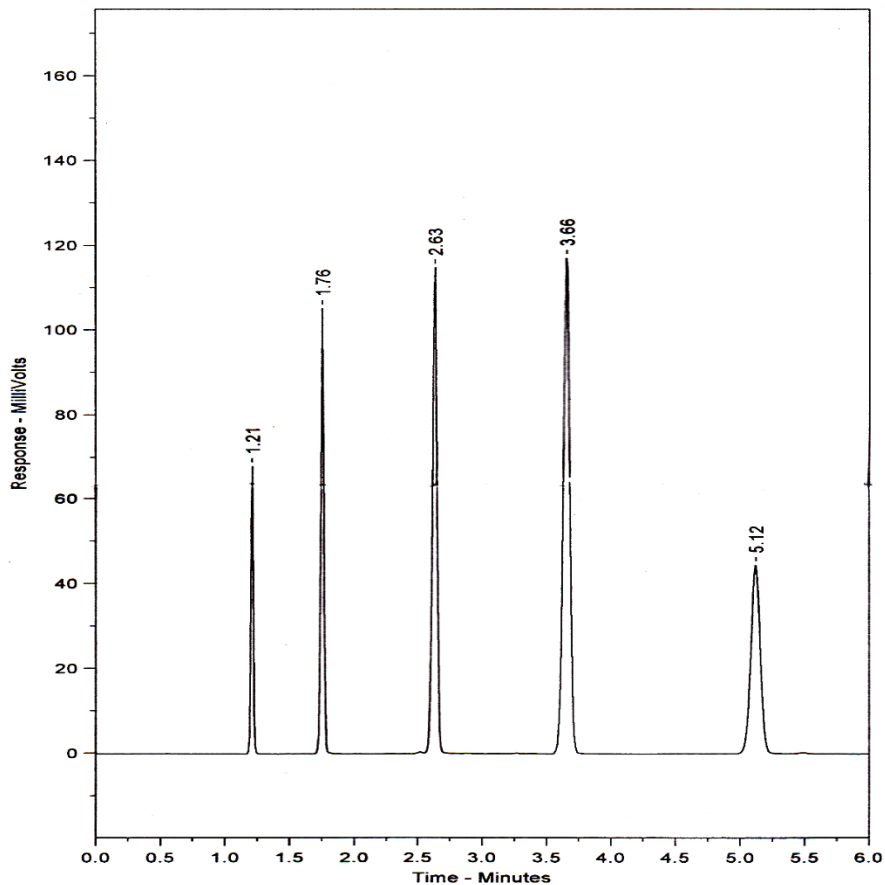
**Eluent** Isocratic 60 % acetonitrile (aq)

**Pressure** 2520 psi

**Temperature** Ambient

**Sample Volume** 5  $\mu$ l

**Detection** UV at 254nm



<b>Peak No</b>	<b>Peak Name</b>	<b>Retention time (minutes)</b>	<b>Capacity Factor</b>
1	Theophyline	1.21	0.00
2	p-Nitroaniline	1.76	0.45
3	Methyl Benzoate	2.63	1.17
4	Phenetole	3.66	2.02
5	o-Xylene	5.12	3.23

**Efficiency o-Xylene (n/m) = 154607**

**Asymmetry Factor (10%) o-Xylene = 1.039**