



Certificate of Analysis

LudgerSep R1 HPLC Column for Glycan Analysis

Cat. #: LS-R1-4.6x150

Batch #: B68J-03

Size: 4.6 x 150 mm

This column conforms to the specifications given in Ludger document # LS-R1-GUIDE.

Packed Solvent 60 % acetonitrile (aq)

Test Analysis

Flow Rate 1.25 ml / min

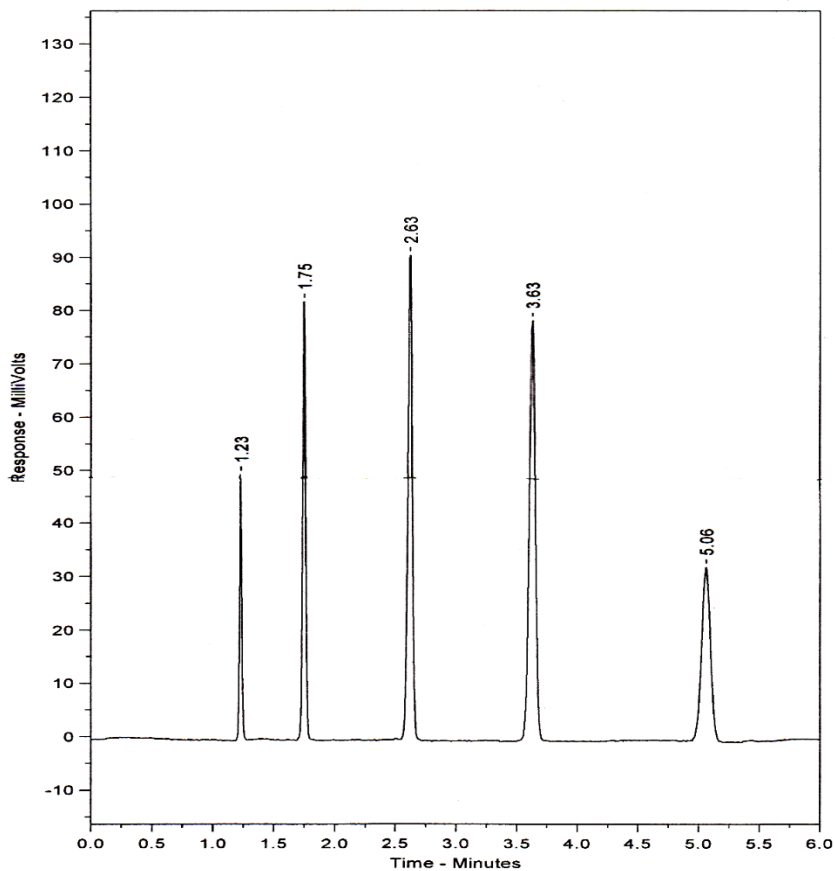
Eluent Isocratic 60 % acetonitrile (aq)

Pressure 2380 psi

Temperature Ambient

Sample Volume 5 μ l

Detection UV at 254nm



Peak No	Peak Name	Retention time (minutes)	Capacity Factor
1	Theophyline	1.23	0.00
2	p-Nitroaniline	1.75	0.43
3	Methyl Benzoate	2.63	1.14
4	Phenetole	3.63	1.95
5	o-Xylene	5.06	3.12

Efficiency o-Xylene (n/m) = 150753

Asymmetry Factor (10%) o-Xylene = 0.961