



## Certificate of Analysis

---

### LudgerSep R1 HPLC Column for Glycan Analysis

Cat. #: LS-R1-4.6x150

Batch #: B5BH-04

Size: 4.6 x 150 mm

---

This column conforms to the specifications given in Ludger document # LS-R1-GUIDE.

**Packed Solvent** 60 % acetonitrile (aq)

#### Test Analysis

**Flow Rate** 1.25 ml / min

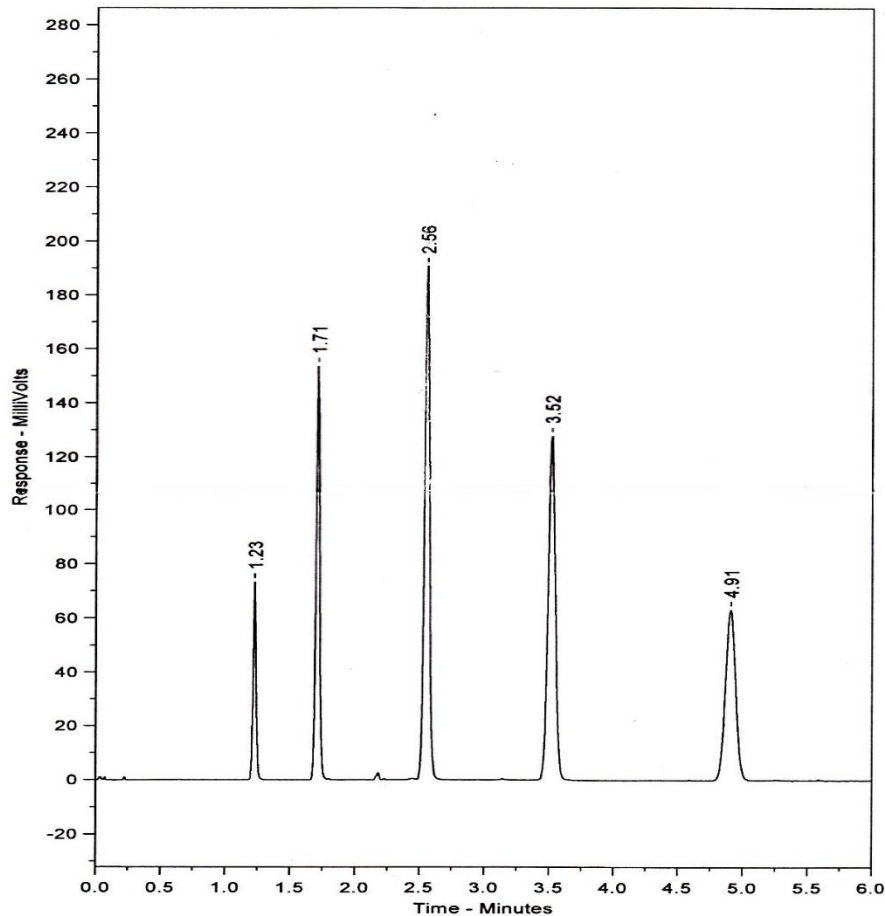
**Eluent** Isocratic 60 % acetonitrile (aq)

**Pressure** 2130 psi

**Temperature** Ambient

**Sample Volume** 5  $\mu$ l

**Detection** UV at 254nm



| Peak No | Peak Name       | Retention time (minutes) | Capacity Factor |
|---------|-----------------|--------------------------|-----------------|
| 1       | Theophyline     | 1.23                     | 0.00            |
| 2       | p-Nitroaniline  | 1.71                     | 0.39            |
| 3       | Methyl Benzoate | 2.56                     | 1.08            |
| 4       | Phenetole       | 3.52                     | 1.87            |
| 5       | o-Xylene        | 4.91                     | 3.00            |

Efficiency o-Xylene (n/m) = 123351

Asymmetry Factor (10%) o-Xylene = 1.018