



## Certificate of Analysis

---

### LudgerSep R1 HPLC Column for Glycan Analysis

Cat. #: LS-R1-4.6x150

Batch #: B5AF-01

Size: 4.6 x 150 mm

---

This column conforms to the specifications given in Ludger document # LS-R1-GUIDE.

**Packed Solvent**      60 % acetonitrile (aq)

#### Test Analysis

**Flow Rate**            1.25 ml / min

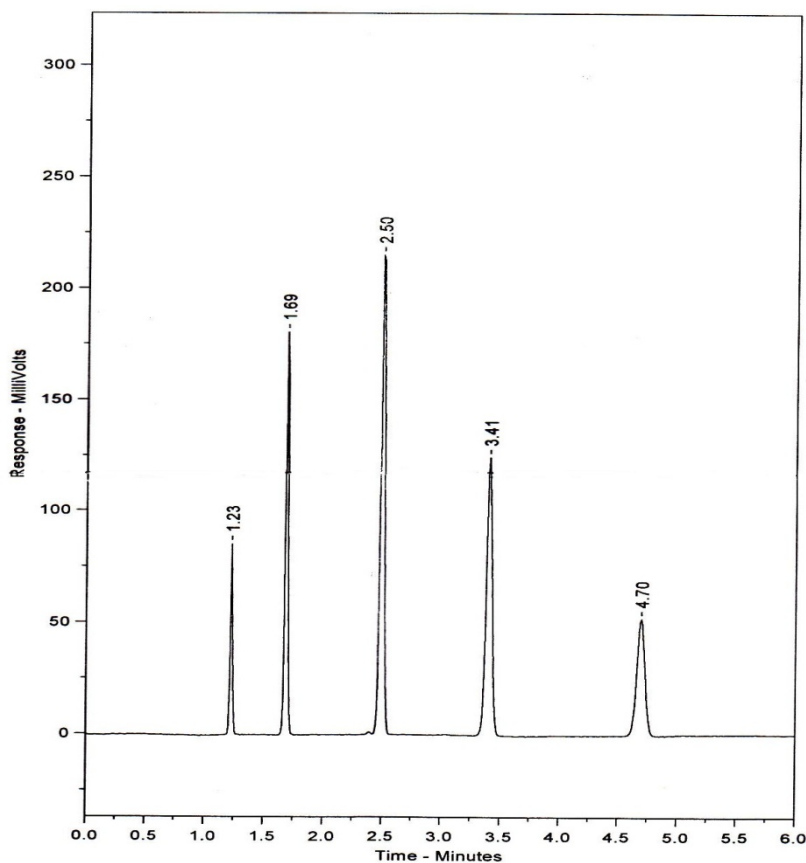
**Eluent**                Isocratic 60 % acetonitrile (aq)

**Pressure**             2000 psi

**Temperature**        Ambient

**Sample Volume**     5  $\mu$ l

**Detection**            UV at 254nm



Peak No	Peak Name	Retention time (minutes)	Capacity Factor
1	Theophylline	1.23	0.00
2	p-Nitroaniline	1.69	0.38
3	Methyl Benzoate	2.50	1.04
4	Phenetole	3.41	1.77
5	o-Xylene	4.70	2.82

Efficiency o-Xylene (n/m) = 145857

Asymmetry Factor (10%) o-Xylene = 0.916