



Certificate of Analysis

LudgerSep R1 HPLC Column for Glycan Analysis

Cat. #: LS-R1-4.6x150

Batch #: B5A8-07

Size: 4.6 x 150 mm

This column conforms to the specifications given in Ludger document # LS-R1-GUIDE.

Packed Solvent 60 % acetonitrile (aq)

Test Analysis

Flow Rate 1.25 ml / min

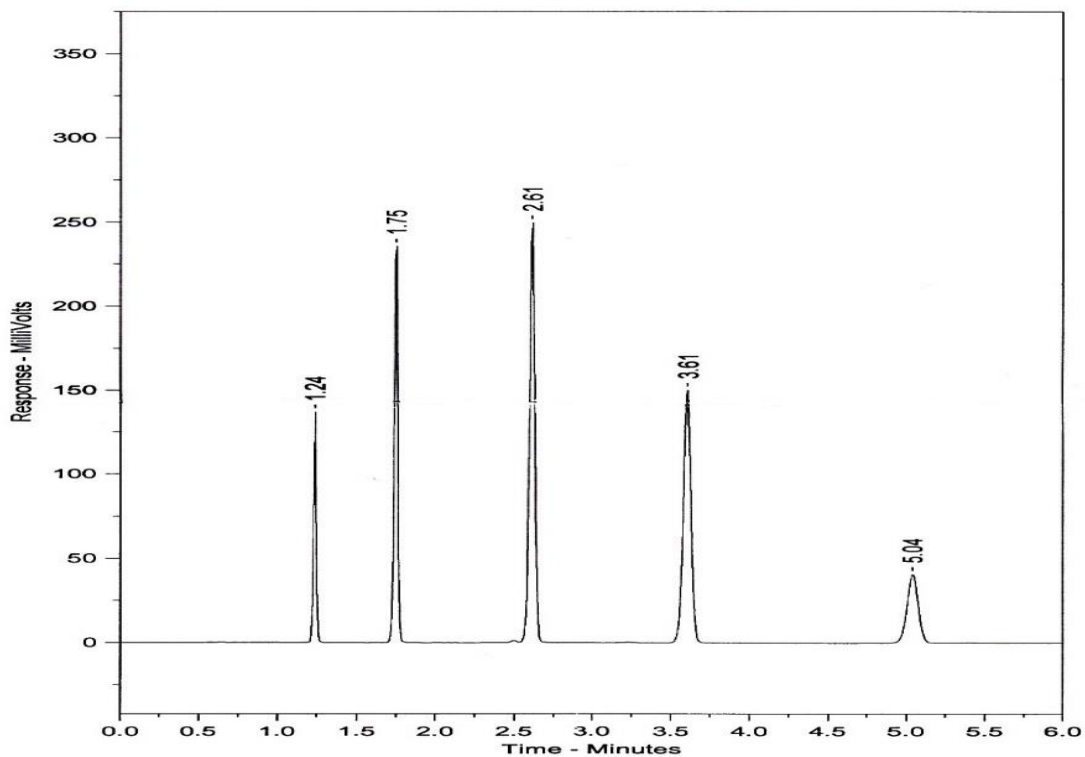
Eluent Isocratic 60 % acetonitrile (aq)

Pressure 2221 psi

Temperature Ambient

Sample Volume 5 μ l

Detection UV at 254nm



Peak No	Peak Name	Retention time (minutes)	Capacity Factor
1	Theophyline	1.24	0.00
2	p-Nitroaniline	1.75	0.41
3	Methyl Benzoate	2.61	1.11
4	Phenetole	3.61	1.92
5	o-Xylene	5.04	3.07

Efficiency o-Xylene (n/m) = 149536

Asymmetry Factor (10%) o-Xylene = 0.914