



## Certificate of Analysis

---

### LudgerSep R1 HPLC Column for Glycan Analysis

Cat. #: LS-R1-4.6x150

Batch #: B59F-10

Size: 4.6 x 150 mm

---

This column conforms to the specifications given in Ludger document # LS-R1-GUIDE.

**Packed Solvent** 60 % acetonitrile (aq)

#### Test Analysis

**Flow Rate** 1.25 ml / min

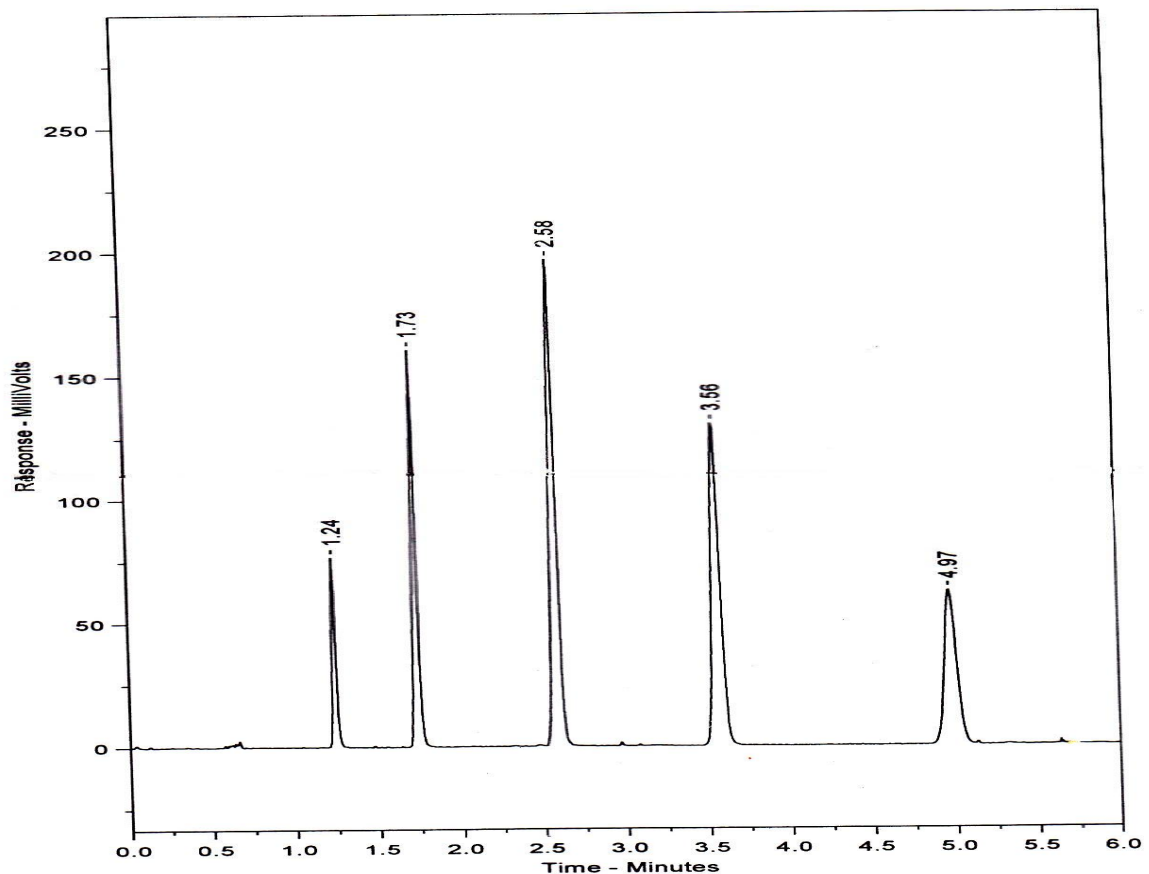
**Eluent** Isocratic 60 % acetonitrile (aq)

**Pressure** 2095 psi

**Temperature** Ambient

**Sample Volume** 5  $\mu$ l

**Detection** UV at 254nm



Peak No	Peak Name	Retention time (minutes)	Capacity Factor
1	Theophyline	1.24	0.00
2	p-Nitroaniline	1.73	0.40
3	Methyl Benzoate	2.58	1.09
4	Phenetole	3.56	1.88
5	o-Xylene	4.97	3.02

Efficiency o-Xylene (n/m) = 142450

Asymmetry Factor (10%) o-Xylene = 1.00