



Certificate of Analysis

LudgerSep R1 HPLC Column for Glycan Analysis

Cat. #: LS-R1-4.6x150

Batch #: B43I-04

Size: 4.6 x 150 mm

This column conforms to the specifications given in Ludger document # LS-R1-GUIDE.

Packed Solvent 60 % acetonitrile (aq)

Test Analysis

Flow Rate 1.25 ml / min

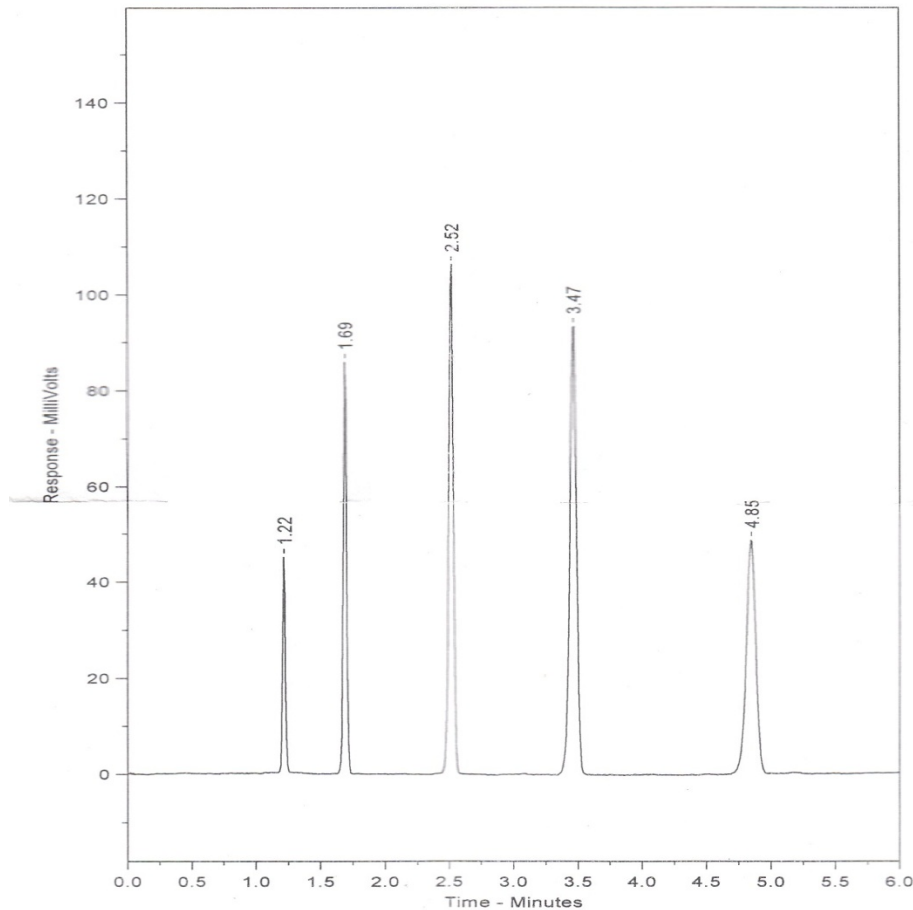
Eluent Isocratic 60 % acetonitrile (aq)

Pressure 2130 psi

Temperature Ambient

Sample Volume 5 μ l

Detection UV at 254nm



| Peak No | Peak Name | Retention time (minutes) | Capacity Factor |
|---------|-----------------|--------------------------------|-----------------|
| 1 | Theophyline | 1.22 | 0.00 |
| 2 | p-Nitroaniline | 1.69 | 0.39 |
| 3 | Methyl Benzoate | 2.52 | 1.07 |
| 4 | Phenetole | 3.47 | 1.85 |
| 5 | o-Xylene | 4.85 | 2.99 |

Efficiency o-Xylene (n/m) = 137554

Asymmetry Factor (10%) o-Xylene = 0.964