



## Certificate of Analysis

---

### LudgerSep R1 HPLC Column for Glycan Analysis

Cat. # : LS-R1-4.6x150

Batch # : B426-01

Size : 4.6 x 150 mm

---

This column conforms to the specifications given in Ludger document # LS-R1-GUIDE.

**Packed Solvent**      60 % acetonitrile (aq)

#### Test Analysis

**Flow Rate**            1.25 ml / min

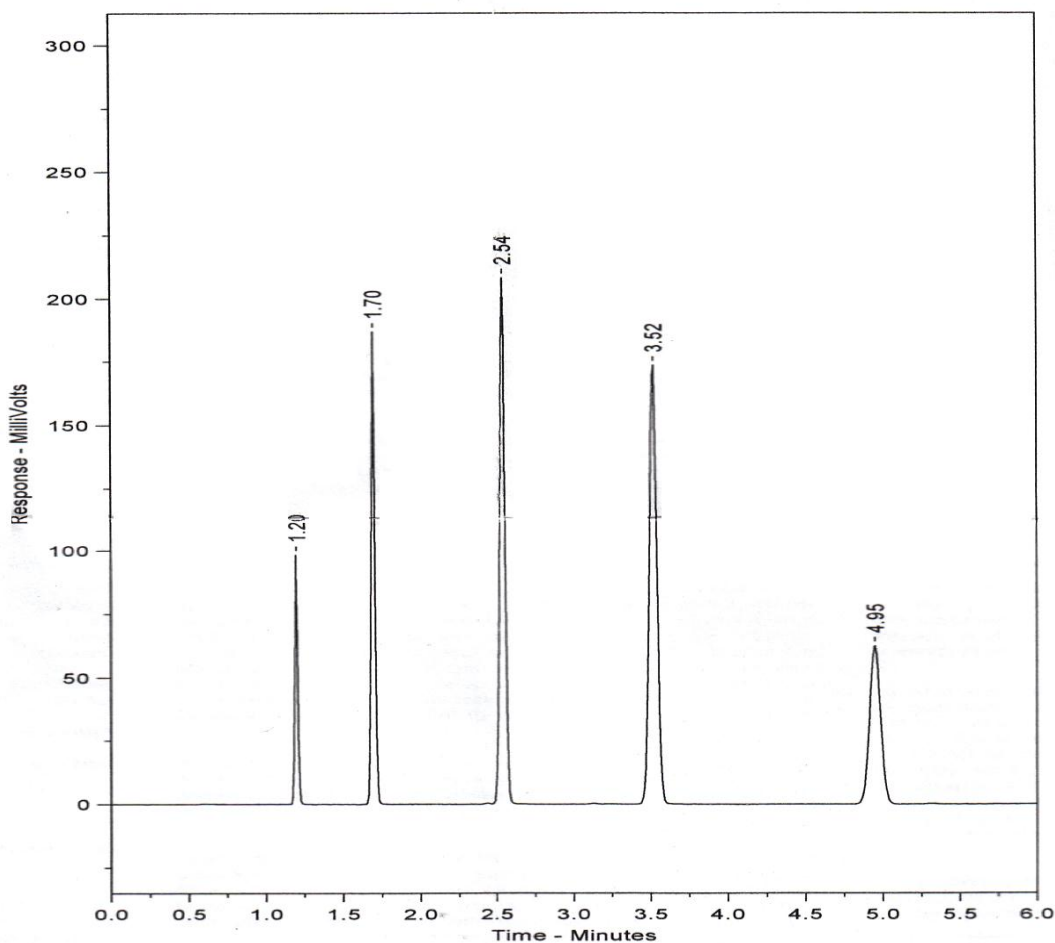
**Eluent**                Isocratic 60 % acetonitrile (aq)

**Pressure**             2310 psi

**Temperature**        Ambient

**Sample Volume**     5  $\mu$ l

**Detection**            UV at 254nm



<b>Peak No</b>	<b>Peak Name</b>	<b>Retention time (minutes)</b>	<b>Capacity Factor</b>
1	Theophyline	1.20	0.00
2	p-Nitroaniline	1.70	0.42
3	Methyl Benzoate	2.54	1.12
4	Phenetole	3.52	1.94
5	o-Xylene	4.95	3.13

**Efficiency o-Xylene (n/m) = 149205**

**Asymmetry Factor (10%) o-Xylene = 0.95**