



Certificate of Analysis

LudgerSep R1 HPLC Column for Glycan Analysis

Cat. #: LS-R1-4.6x150

Batch #: B3B6-01

Size: 4.6 x 150 mm

This column conforms to the specifications given in Ludger document # LS-R1-GUIDE.

Packed Solvent 60 % acetonitrile (aq)

Test Analysis

Flow Rate 1.25 ml / min

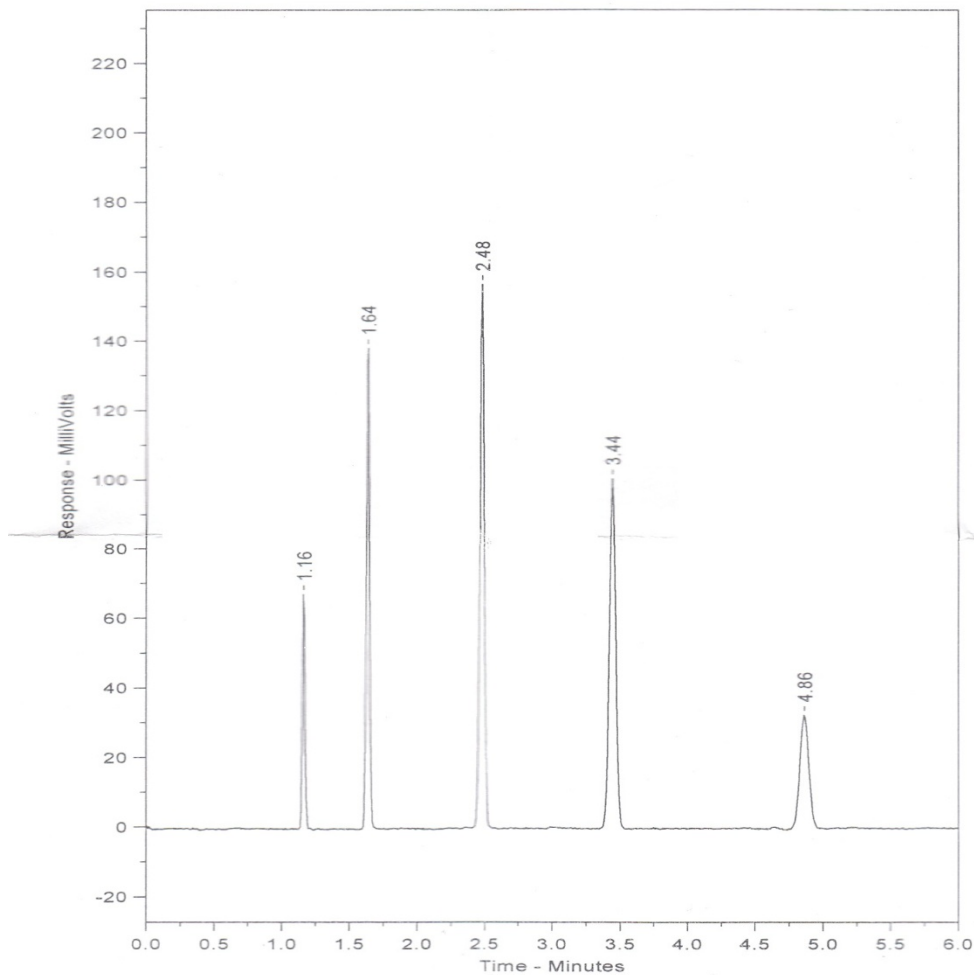
Eluent Isocratic 60 % acetonitrile (aq)

Pressure 2200 psi

Temperature Ambient

Sample Volume 5 μ l

Detection UV at 254nm



Peak No	Peak Name	Retention time (minutes)	Capacity Factor
1	Theophyline	1.16	0.00
2	p-Nitroaniline	1.64	0.41
3	Methyl Benzoate	2.48	1.13
4	Phenetole	3.44	1.97
5	o-Xylene	4.86	3.19

Efficiency o-Xylene (n/m) = 163009

Asymmetry Factor (10%) o-Xylene = 1.054