

Certificate of Analysis

LudgerSep™ BPT Solvent

Cat. #: LS-R-BPTX10

Batch: B926-02

Size: 50ml

Expiry date: 06 Feb 2020 if unopened, 1 month from date of dilution

Test Analysis

Column LudgerSep R2 LS-R2-4.6x150
Solvent A LS-R-BPTX10 made up to 500 mL with purified water
Solvent B Acetonitrile
Gradient

Time (min)	Flow (mL/min)	%A	%B
0.00	0.8	96.5	3.5
7.00	0.8	96.5	3.5
25.25	0.8	91.5	7.5
26.25	0.8	50.0	50.0
26.75	1.2	50.0	50.0
32.25	1.2	96.5	3.5
35.00	0.8	96.5	3.5
35.50	0.8	96.5	3.5
40.00	0	96.5	3.5

Temperature 30 °C

Sample CM-Mono-Mix-10, B654-02, 1 in 100 dilution
 2-AA labelled Monosaccharide Reference Standard

Injection Volume 10 µL

Fluorescence Detection λ_{Ex} 360nm, λ_{Em} 425nm

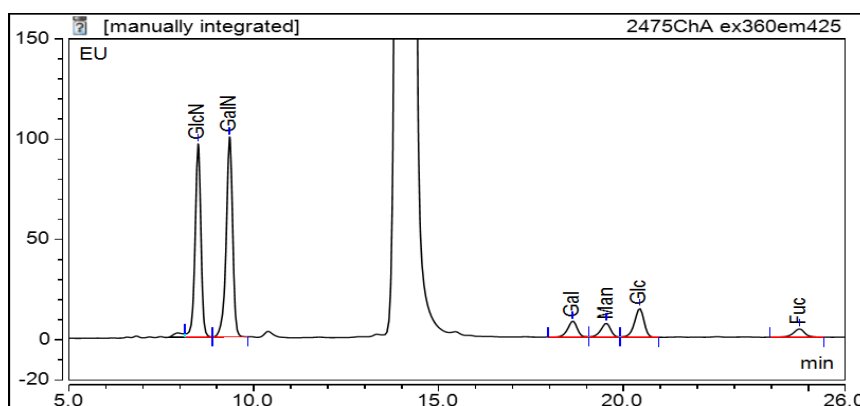


Figure 1: LudgerSep-R2 profile of CM-Mono-Mix-10 -2AA labelled - monosaccharide gradient. Date of Analysis – 12 Feb 2019