

Certificate of Analysis

LudgerSep™ BPT Solvent

Cat. #: LS-R-BPTX10

Batch: B86J-06

Size: 50ml

Expiry date: 19 Jun 2019 if unopened, 1 month from date of dilution

Test Analysis

Column LudgerSep R2 LS-R2-4.6x150
Solvent A LS-R-BPTX10 made up to 500 mL with purified water
Solvent B Acetonitrile
Gradient

| Time (min) | Flow (mL/min) | %A | %B |
|------------|---------------|------|------|
| 0.00 | 0.8 | 96.5 | 3.5 |
| 7.00 | 0.8 | 96.5 | 3.5 |
| 25.25 | 0.8 | 91.5 | 7.5 |
| 26.25 | 0.8 | 50.0 | 50.0 |
| 26.75 | 1.2 | 50.0 | 50.0 |
| 32.25 | 1.2 | 96.5 | 3.5 |
| 35.00 | 0.8 | 96.5 | 3.5 |
| 35.50 | 0.8 | 96.5 | 3.5 |
| 40.00 | 0 | 96.5 | 3.5 |

Temperature 30 °C
Sample CM-Mono-Mix-10, Bxxx-xx, 1 in 100 dilution
 2-AA labelled Monosaccharide Reference Standard
Injection Volume 10 µL
Fluorescence Detection λ_{Ex} 360nm, λ_{Em} 425nm

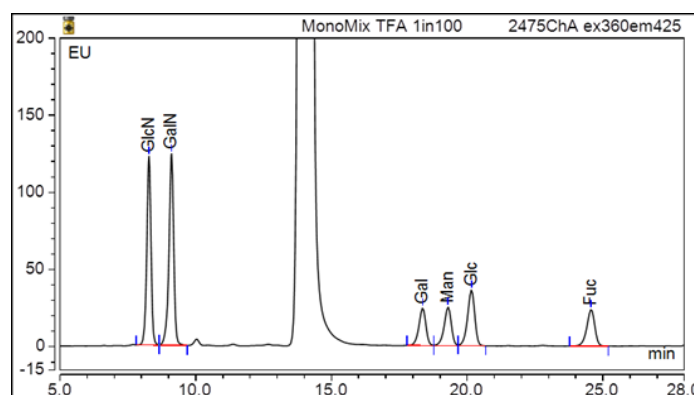


Figure 1: LudgerSep-R2 profile of CM-Mono-Mix-10 -2AA labelled - monosaccharide gradient. Date of Analysis –23 Jun 2018