



Certificate of Analysis

LudgerSep™ BPT Solvent

Cat. # LS-R-BPTX10

Batch #: B64R-02

Size: 50 mL

Test Analysis

Column LudgerSep R2 LS-R2-4.6x150
Solvent A LS-R-BPTX10 made up to 500 mL with purified water
Solvent B Acetonitrile
Gradient

Time (min)	Flow (mL/min)	%A	%B
0.0	0.8	96.5	3.5
7.0	0.8	96.5	3.5
22.0	0.8	92.5	7.5
23.0	0.8	50.0	50.0
23.5	1.2	50.0	50.0
29.0	1.2	96.5	3.5
30.0	0.8	96.5	3.5
35.5	0.8	96.5	3.5

Temperature 35 °C
Sample CM-Mono-Mix-10, B633-03, 1 in 200 dilution
 2-AA labelled Monosaccharide Reference Standard
Injection Volume 10 µL
Fluorescence Detection λ_{Ex} 360nm, λ_{Em} 425nm

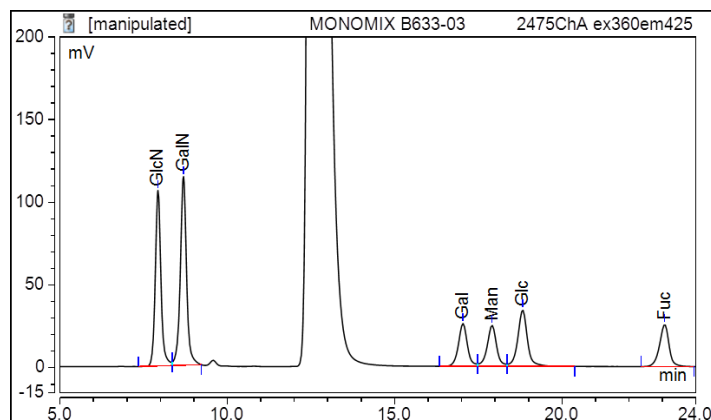


Figure 1. LudgerSep-R2 profile of CM-Mono-Mix-10 -2AA labelled - monosaccharide gradient. Date of Analysis – 16 May 2016.