



## Certificate of Analysis

### LudgerSep™ BPT Solvent

Cat. # LS-R-BPTX10

Batch #: B64C-02

Size: 50 mL

#### Test Analysis

**Column** LudgerSep R2 LS-R2-4.6x150  
**Solvent A** LS-R-BPTX10 made up to 500 mL with purified water  
**Solvent B** Acetonitrile  
**Gradient**

Time (min)	Flow (mL/min)	%A	%B
0.0	0.8	96.5	3.5
7.0	0.8	96.5	3.5
22.0	0.8	92.5	7.5
23.0	0.8	50.0	50.0
23.5	1.2	50.0	50.0
29.0	1.2	96.5	3.5
30.0	0.8	96.5	3.5
35.5	0.8	96.5	3.5

**Temperature** 35 °C  
**Sample** CM-Mono-Mix-10, B56F-03, 1 in 200 dilution  
 2-AA labelled Monosaccharide Reference Standard  
**Injection Volume** 10 µL  
**Fluorescence Detection**  $\lambda_{Ex}$  360nm,  $\lambda_{Em}$  425nm

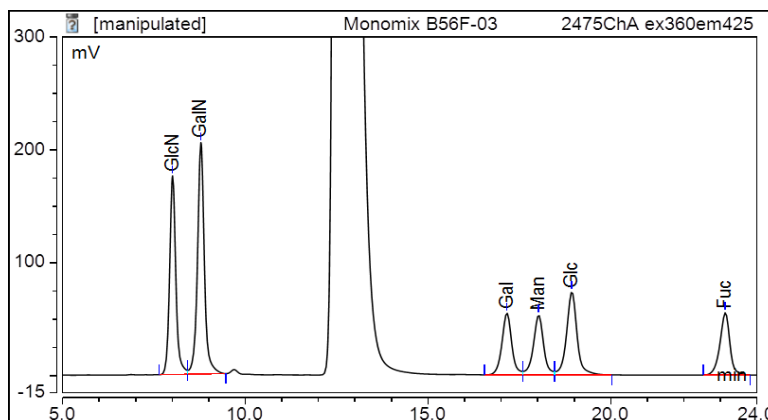


Figure 1. LudgerSep-R2 profile of CM-Mono-Mix-10 -2AA labelled - monosaccharide gradient. Date of Analysis – 25 Apr 2016.