



## Certificate of Analysis

### LudgerSep™ BPT Solvent

Cat. # LS-R-BPTX10

Batch #: B54M-03

Size: 50 mL

#### Test Analysis

<b>Column</b>	LudgerSep uR2 LS-UR2-2.1x50			
<b>Flow Rate</b>	0.4 mL / min			
<b>Solvent A</b>	LS-R-BPTX10 made up to 500 mL with purified water			
<b>Solvent B</b>	Acetonitrile			
<b>Gradient</b>	<b>Time (min)</b>	<b>% A</b>	<b>%B</b>	
	00.00	0.0	0.0	
	01.00	0.0	0.0	
	04.50	84.3	15.7	
	04.60	50.0	50.0	
	05.60	50.0	50.0	
	06.00	100.0	0.0	0.6 mL/min
	08.00	100.0	0.0	0.6 mL/min

**Temperature** 35 °C

**Sample** CM-MONO-MIX-10, B53O-01, 1 in 50 dilution  
2-AA labelled Monosaccharide Reference Standard

**Injection Volume** 5 µL

**Fluorescence Detection**  $\lambda_{Ex}$  360nm,  $\lambda_{Em}$  425nm

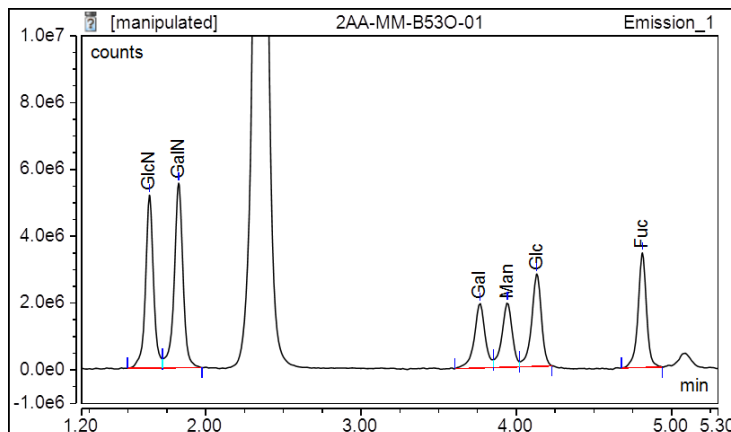


Figure 1. LudgerSep-uR2 profile of CM-Mono-Mix-10 -2AA labelled - monosaccharide gradient. Date of Analysis – 28 April 2015.