



Certificate of Analysis

LudgerSep™ BPT Solvent

Cat. #: LS-R-BPTX10

Batch #: B4C5-03

Size: 50 mL

Test Analysis

Column	LudgerSep uR2 LS-UR2-2.1x50			
Flow Rate	0.4 mL / min			
Solvent A	LS-R-BPTX10 made up to 500 mL with purified water			
Solvent B	Acetonitrile			
Gradient	Time (min)	%A	%B	
	00.00	0.0	0.0	
	01.00	0.0	0.0	
	04.50	84.3	15.7	
	04.60	50.0	50.0	
	05.60	50.0	50.0	
	06.00	100.0	0.0	0.6 mL/min
	08.00	100.0	0.0	0.6 mL/min
Temperature	35 °C			
Sample	CM-Mono-Mix-10, B31L-01 (1 in 20 dilution) 2-AA labelled Monosaccharide Reference Standard			
Injection Volume	5 µL			
Fluorescence Detection	λ_{Ex} 250nm, λ_{Em} 425nm			

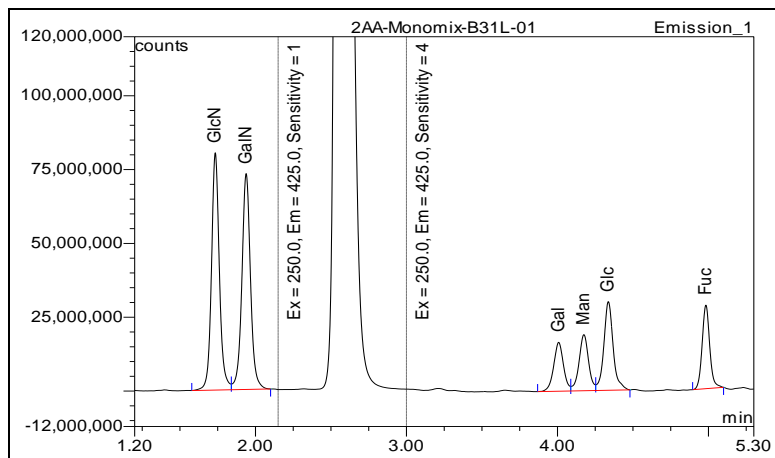


Figure 1. LudgerSep-uR2 profile of CM-Mono-Mix-10 -2AA labelled - monosaccharide gradient.

Date of Analysis – 12 Dec 2014.