



## Certificate of Analysis

---

### LudgerSep N1 Amide HPLC Glycan Analysis Column

Cat. #: LS-N1-4.6x250

Batch #: B49F-05

Size: 4.6 x 250 mm

---

This column conforms to the specifications given in Ludger document # LS-N1-GUIDE.

**Packed Solvent**      75 % acetonitrile (aq)

#### Test Analysis

**Flow Rate**            1 ml / min

**Eluent**                Isocratic 75 % acetonitrile (aq)

**Pressure**             5.4 MPa

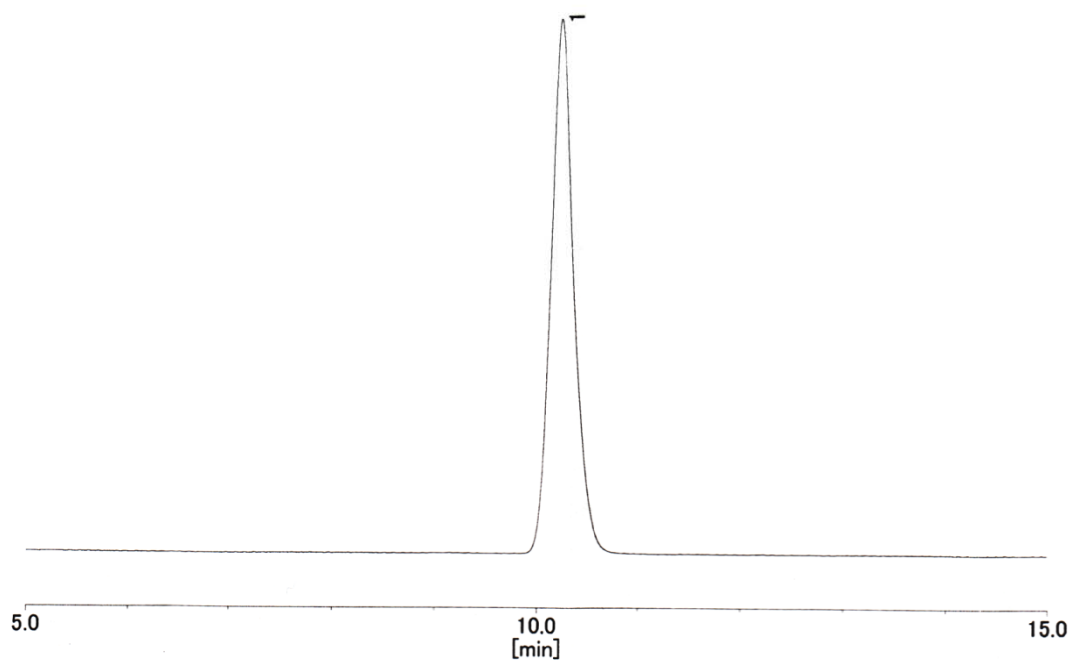
**Temperature**        25 °C

**Sample**                1-Mannitol (at concentration of 2 g dm<sup>-3</sup>)

**Sample Volume**     20 µl

**Detection**            Refractive Index

#### Inspection Chromatogram



Theoretical Plates = 13844

Calculated Peak = >8000