

Certificate of Analysis

LudgerSep™ N1 Amide HPLC Glycan Analysis Column

Cat. #: LS-N1-4.6x250

Batch: C02I-02

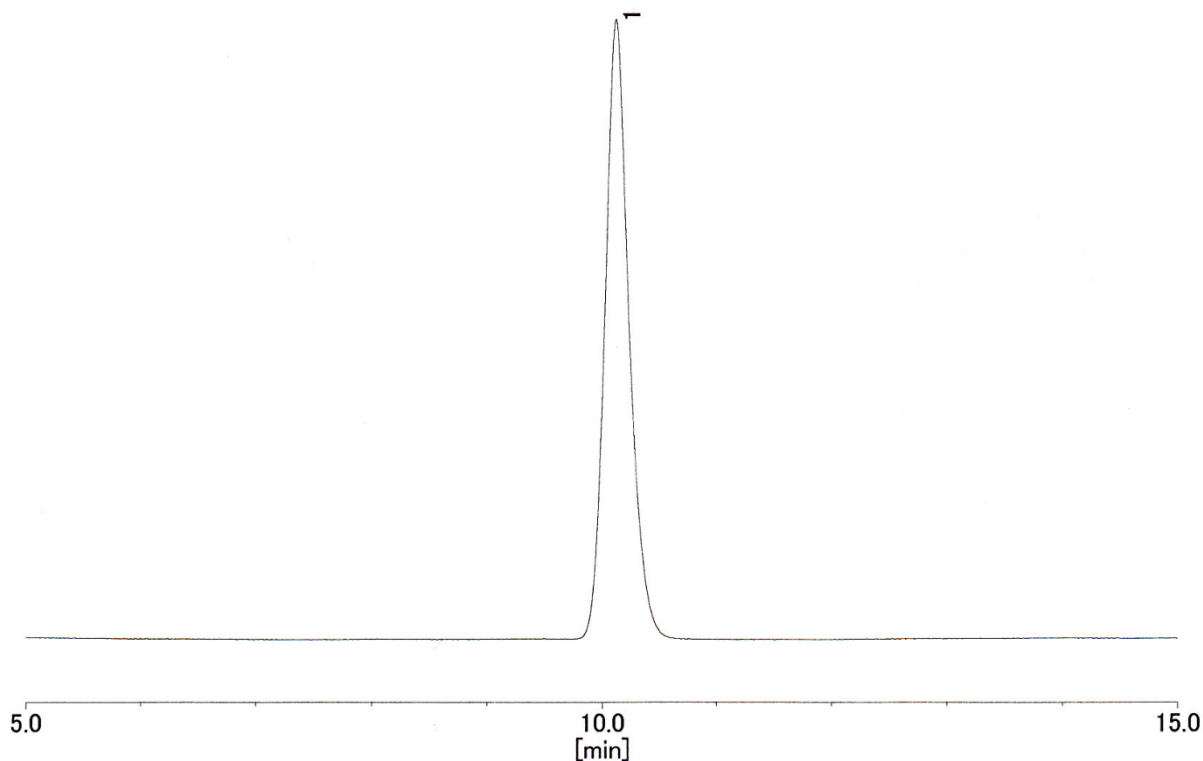
Size: 4.6 x 250 mm

This column conforms to the specifications given in Ludger document # LS-N1-GUIDE.

Packed Solvent 75 % acetonitrile (aq)

Test Analysis

Flow Rate	1 ml / min
Eluent	Isocratic 75 % acetonitrile (aq)
Pressure	5.8 MPa
Temperature	25 °C
Sample	1-Mannitol (at concentration of 2 g dm ⁻³)
Sample Volume	20 µl
Detection	Refractive Index



Theoretical Plates = 12208