

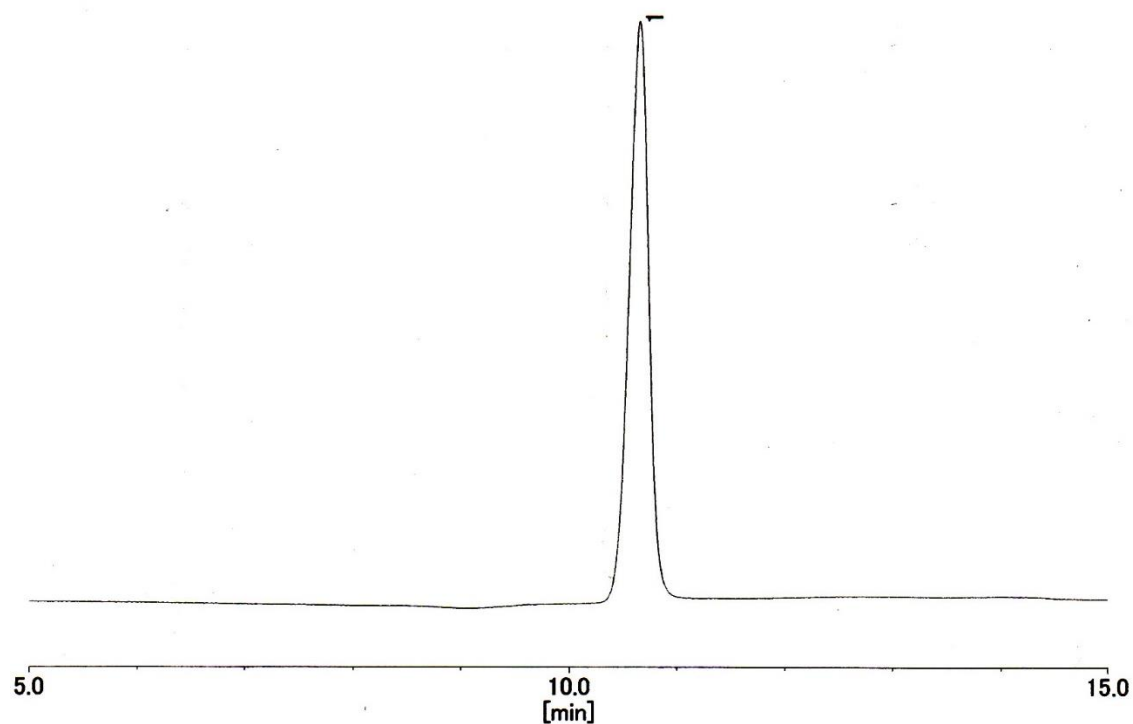
**Certificate of Analysis****LudgerSep™ N1 Amide HPLC Glycan Analysis Column**

Cat. #: LS-N1-4.6x250

Batch: B88U-07

Size: 4.6 x 250 mm

This column conforms to the specifications given in Ludger document # LS-N1-GUIDE.

**Packed Solvent** 75 % acetonitrile (aq)**Test Analysis****Flow Rate** 1 ml / min**Eluent** Isocratic 75 % acetonitrile (aq)**Pressure** 5.8 MPa**Temperature** 25 °C**Sample** 1-Mannitol (at concentration of 2 g dm<sup>-3</sup>)**Sample Volume** 20 µl**Detection** Refractive Index*Theoretical Plates = 15427*