



Certificate of Analysis

LudgerSep N1 Amide HPLC Glycan Analysis Column

Cat. #: LS-N1-4.6x250

Batch #: B44N-02

Size: 4.6 x 250 mm

This column conforms to the specifications given in Ludger document # LS-N1-GUIDE.

Packed Solvent 75 % acetonitrile (aq)

Test Analysis

Flow Rate 1 ml / min

Eluent Isocratic 75 % acetonitrile (aq)

Pressure 5.6 MPa

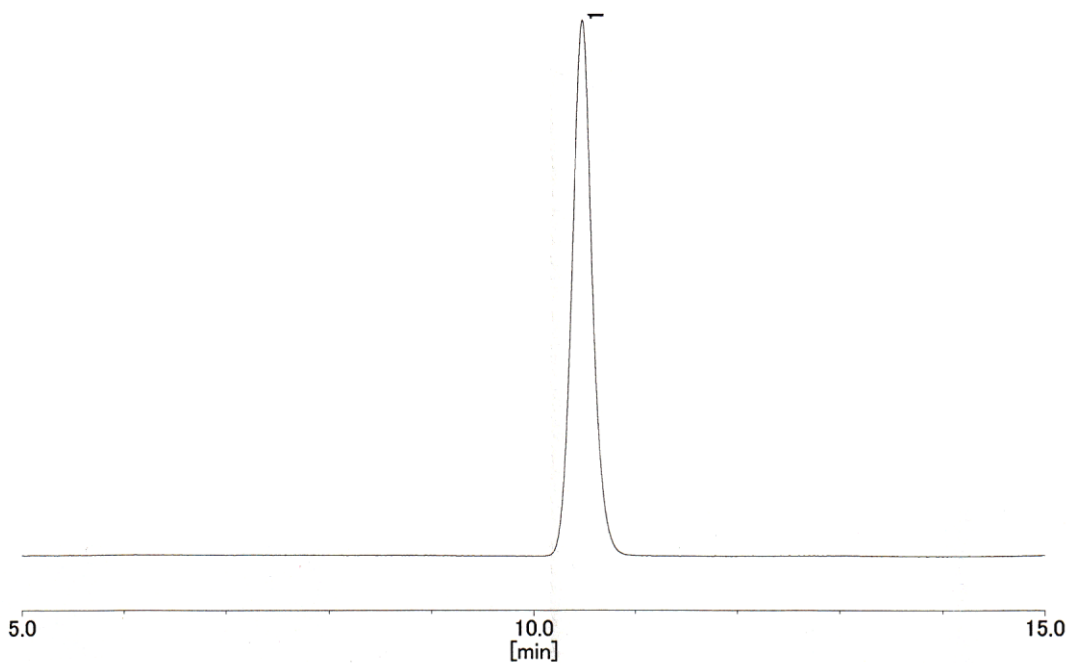
Temperature 25 °C

Sample 1-Mannitol (at concentration of 2 g dm⁻³)

Sample Volume 20 µl

Detection Refractive Index

Inspection Chromatogram



Theoretical Plates = 13,852

Calculated Peak = >8000