



Ludger

Certificate of Analysis

LudgerSep C3 Anion Exchange HPLC Glycan Analysis Column

Cat. # : LS-C3-7.5x75

Batch # : B4C9-02

Size : 7.5 x 75 mm

This column conforms to the specifications given in Ludger document # LS-C3-GUIDE.

Packed Solvent Distilled water

Test Analysis

Flow Rate 1.0 ml / min

Eluent 35mmol/L NaCl+20mmol/ L Tris-HCl (pH 8.0)

Pressure 0.3 MPa

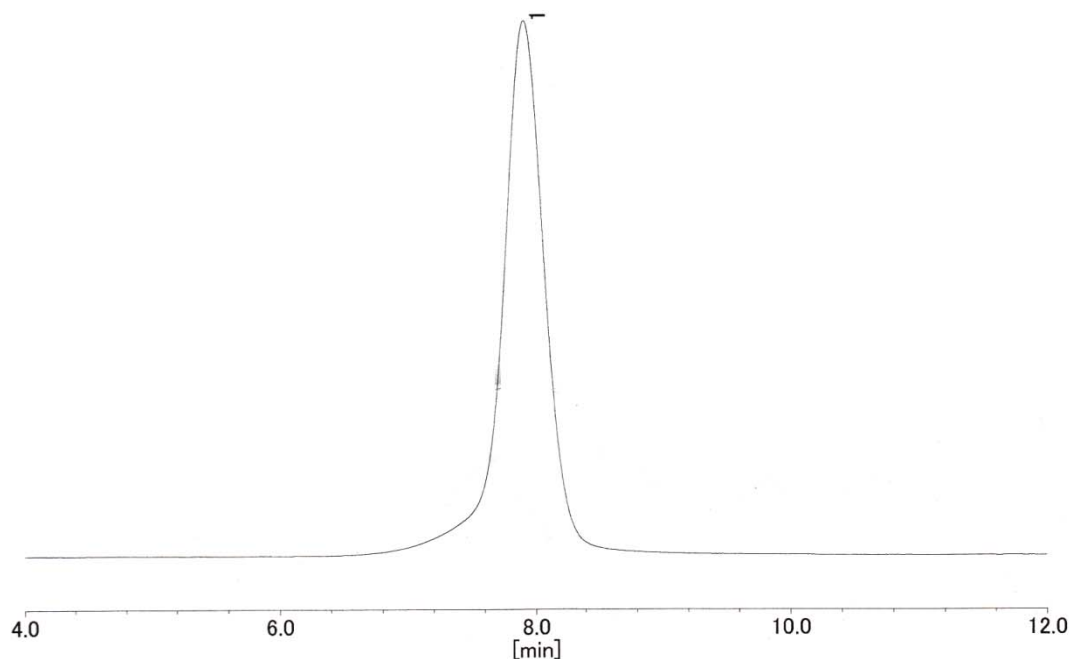
Temperature 25 °C

Sample 0.1 g/L Cytidine-5'- Monophosphate

Sample Volume 20 µl

Detection UV at 254 nm

Inspection Chromatogram



Theoretical Plates = 3,033

Asymmetry Factor = 1.12