



Certificate of Conformity

LudgerSep™ C2 Anion Exchange HPLC Glycan Analysis Column

Cat. #: LS-C2-4.6x50

Batch: C01S-01

Size: 4.6 x 50 mm

This column conforms to the specifications given in Ludger document # LS-C2-GUIDE.

Packed Solvent 0.1M Na₂ SO₄ and 30% methanol

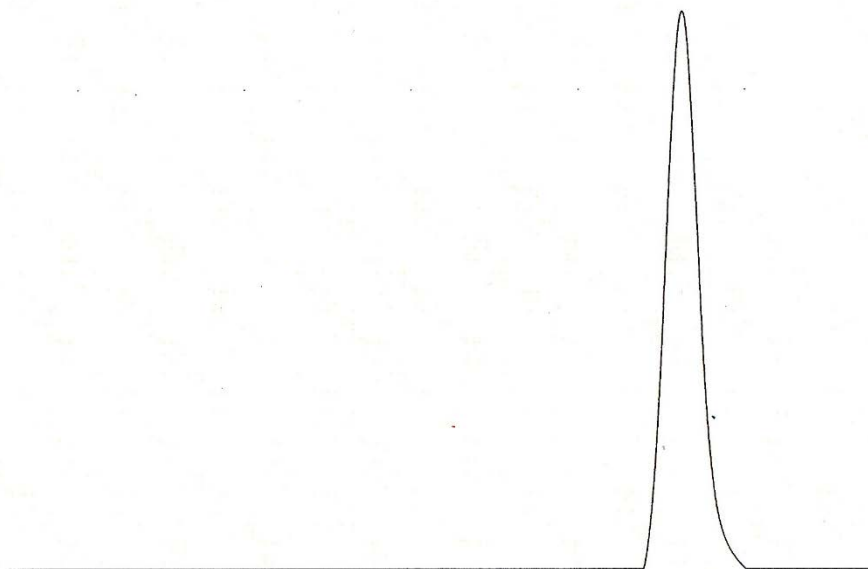
Test Analysis

Flow Rate 0.3 ml / min

Eluent 0.1M Di-Sodium hydrogen orthophosphate dodecahydrate, 0.01M Tris (hydroxymethyl) aminomethane hydrochloride with pH adjusted to 7.0

Sample AMP

Detection UV at 254 nm



Theoretical Plates = 39157 plates/metre