



## Certificate of Analysis

---

### LudgerSep C2 Anion Exchange HPLC Glycan Analysis Column

Cat. # : LS-C2-4.6x150

Batch # : B52G-04

Size : 4.6 x 150 mm

---

This column conforms to the specifications given in Ludger document # LS-C2-GUIDE.

**Packed Solvent** 0.1M Na<sub>2</sub>SO<sub>4</sub> and 30% methanol

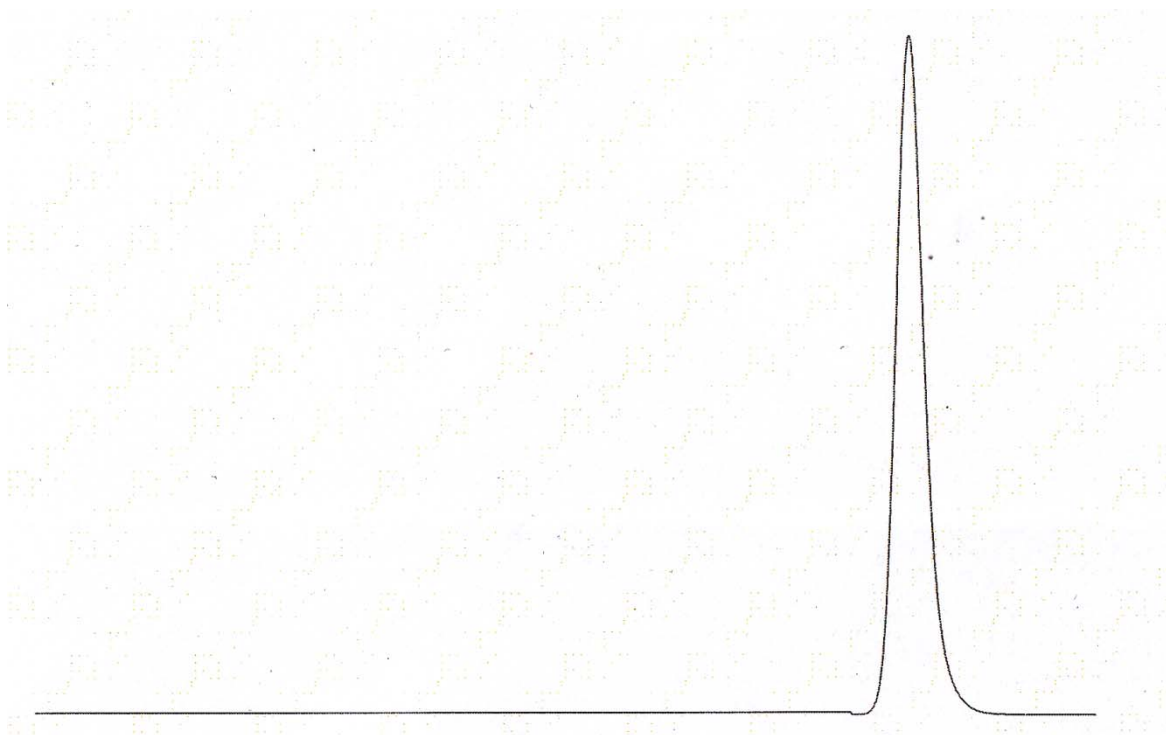
#### Test Analysis

**Flow Rate** 0.5 ml / min

**Eluent** 0.1M Di-Sodium hydrogen orthophosphate dodecahydrate, 0.01M Tris (hydroxymethyl) aminomethane hydrochloride with pH adjusted to 7.0

**Sample** AMP

**Detection** UV at 254 nm



Theoretical Plates = 40892 plates/metre