

Certificate of Analysis

A2G1 Glycan

Cat. #: CN-A2G1-20U (2*10U) / CN-A2G1-10U

Batch: B46A-02

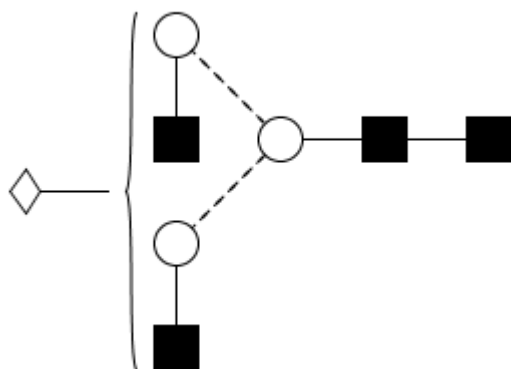
Size: 20 µg (2*10 µg) / 10 µg

Alternative names

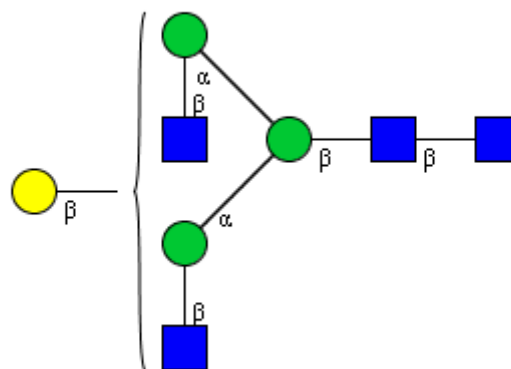
G1

Structure

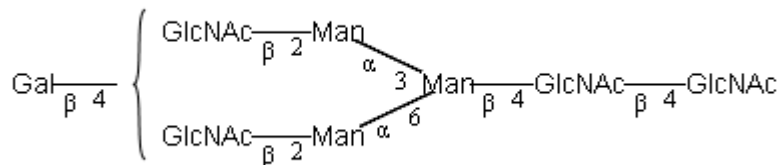
Oxford Notation



CFG Notation



Text Notation



Purity: 95.93% pure as assessed by Waters BEH Glycan chromatography of 2AB labeled glycan (see Fig 1). HPAE-PAD, MS and NMR included as supporting data.

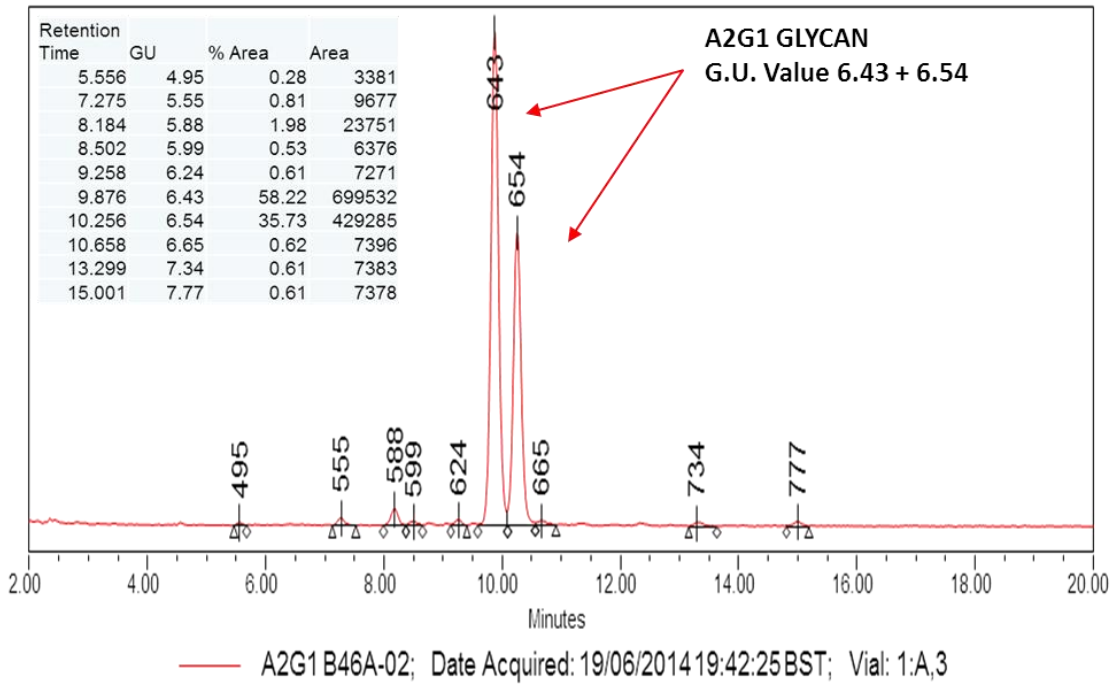


Figure 1: HILIC column UPLC chromatogram of 2AB labelled A2G1 glycan (CN-A2G1-10U, Batch B46A-02).

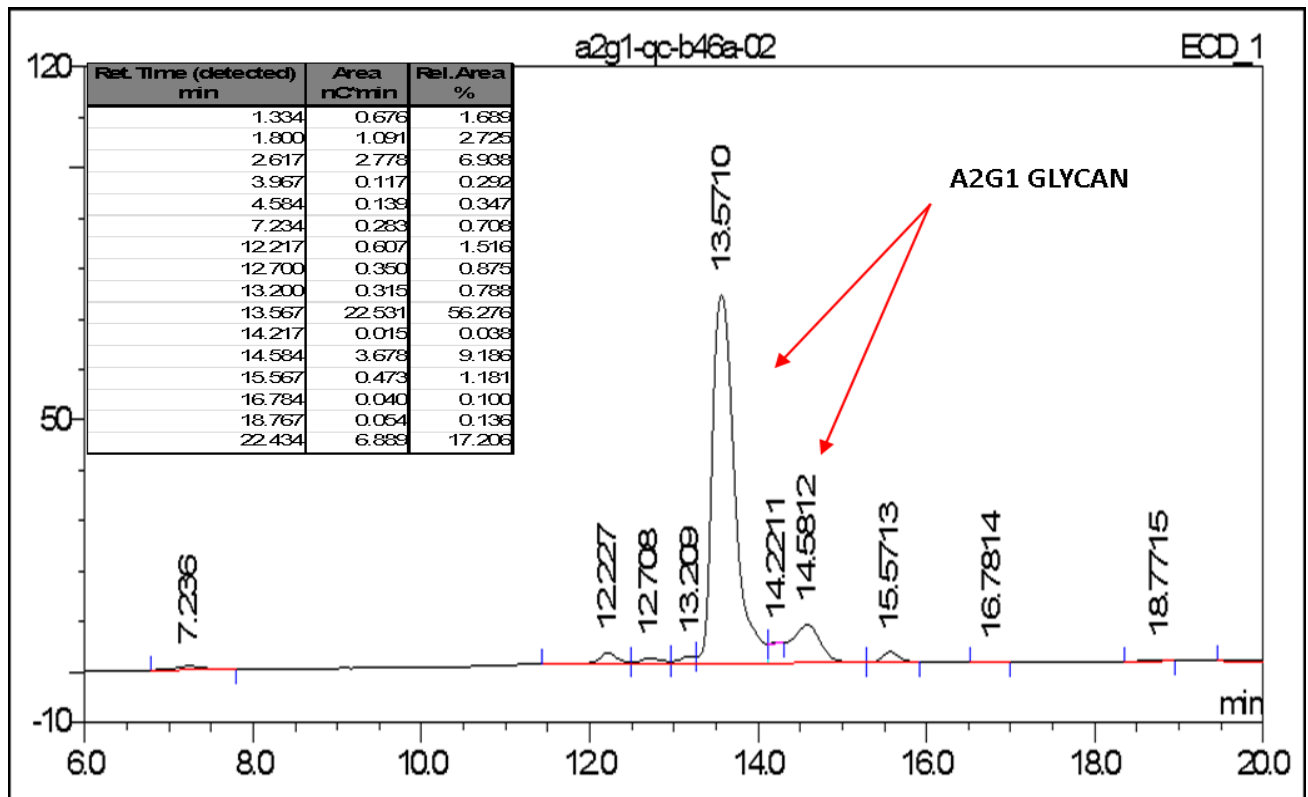


Figure 2: HPAE-PAD HPLC Profile of A2G1 (CN-A2G1-10U, Batch B46A-02).

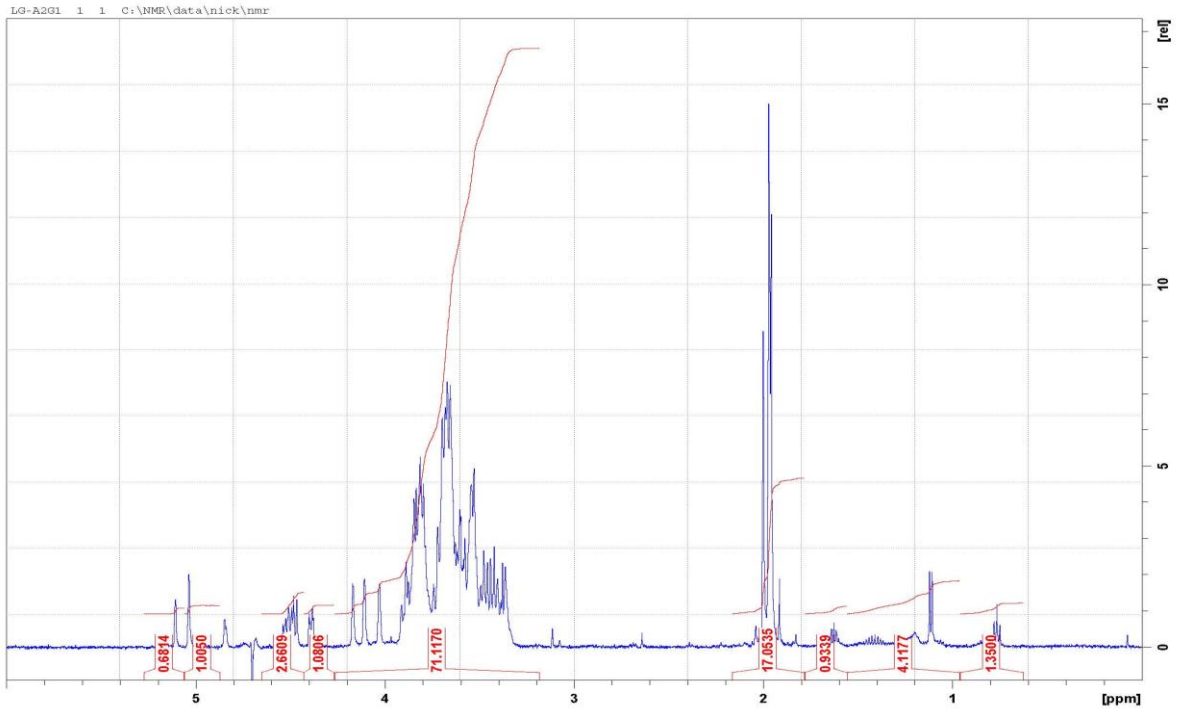


Figure 3: 500MHz $^1\text{H-NMR}$ of A2G1 glycan BULK (CN-A2G1-BULK, Batch B45N-03).

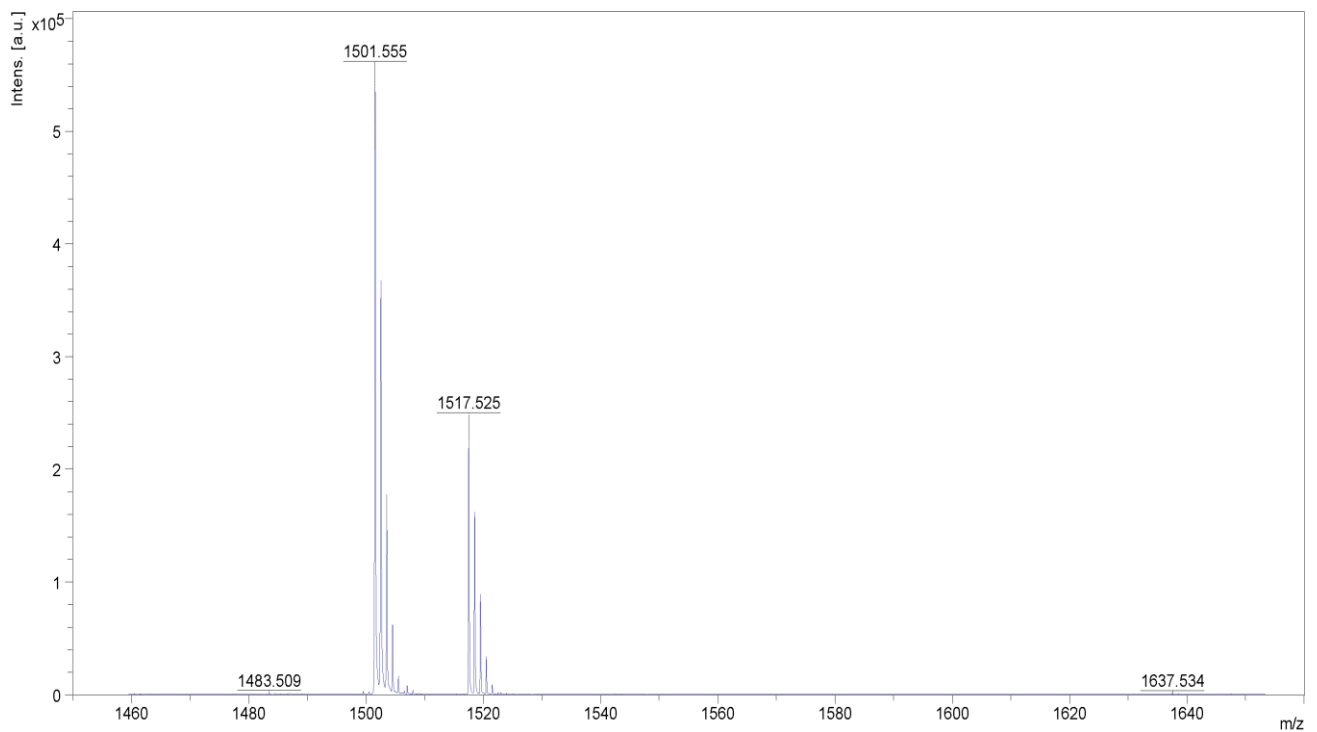


Figure 4: Positive ion mass spectrum of A2G1 glycan (CN-A2G1-10U, Batch B46A-02). Theoretical mass 1501.5 Da $[\text{M}+\text{Na}]^+$, Peak at 1517.5 conforms to K^+ adduct.