

## Certificate of Analysis

### LudgerPure™ APTS Labeled NGA2F Glycan

Cat. #: CAPTS-NGA2F-01

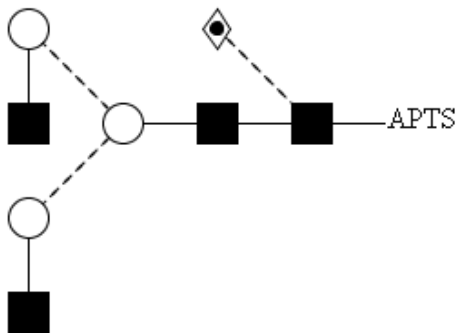
Batch: B5AL-04

Size: ~ 20 pmol

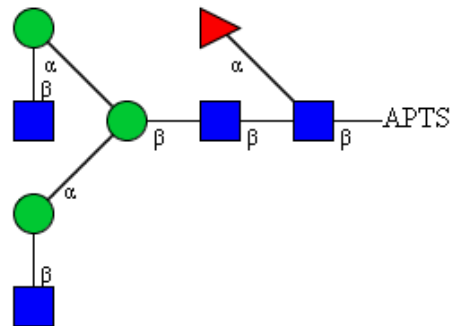
#### Alternative Names

FA2 and G0F

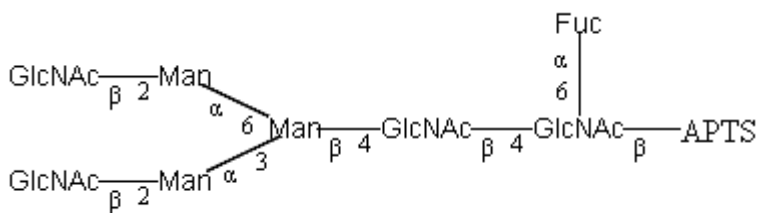
#### Structure



Oxford Notation



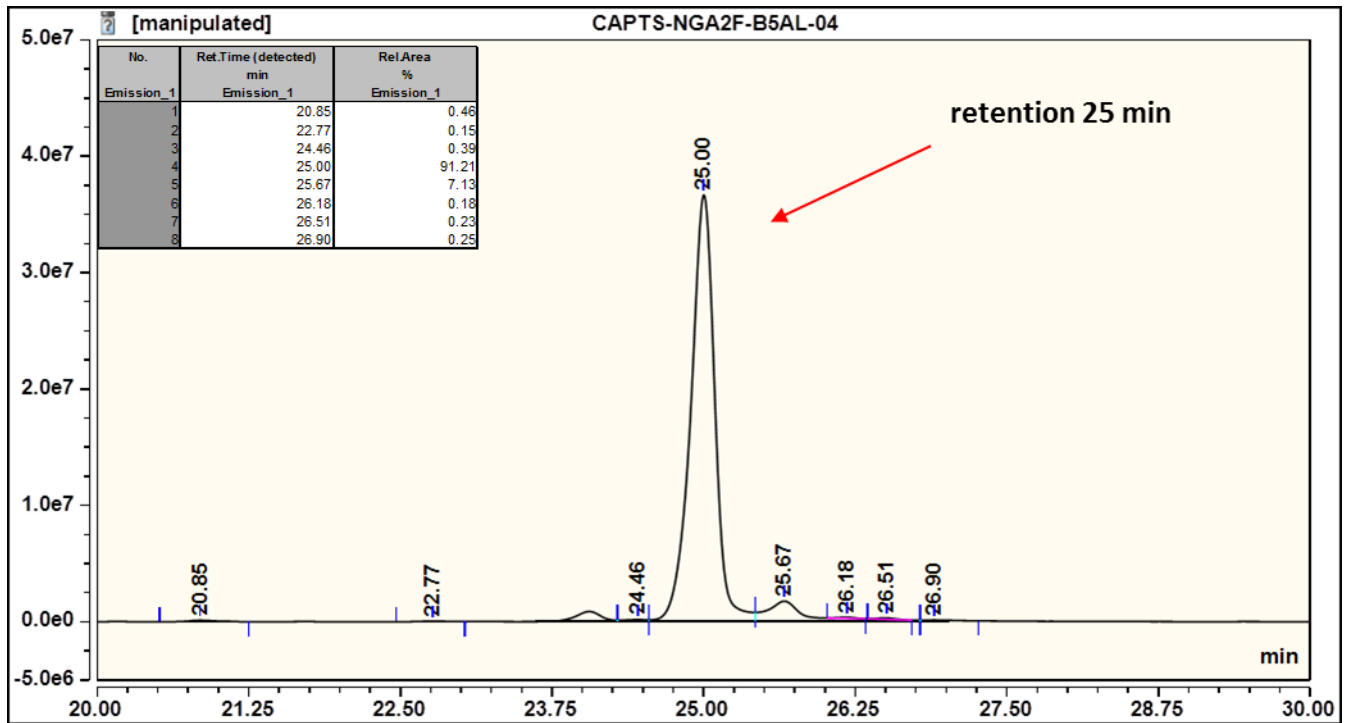
CFG Notation



Text Notation

{The Oxford Notation glycan structure is drawn according to the scheme developed by Oxford-Dublin Glycobiology Laboratory (see Fig 3)}. Gorgeous

**Purity:** > 80 % APTS labelled NGA2F glycan, as assessed by uHPLC - see Figure 1.



**Figure 1: BEH UPLC profile of APTS Labelled NGA2F Glycan (Cat. #: CAPTS-NGA2F-01, Batch # B5AL-04).**

*NGA2F glycan structure identified by uHPLC.*

The APTS labelled NGA2F glycan peak (figure 1) eluted at 25 minutes under the following UPLC conditions:

Column: Waters BEH UPLC column, 1.7  $\mu$ M

Flow: 0.5 ml/min

Temperature: 60 °C

Solvent A: 50 mM Ammonium formate pH 4.4

Solvent B: 100 % Acetonitrile

Gradient: 0 min - 78 % B

38.5 min – 55.9 % B

40.5 min - 0 % B

42.5 min - 0 % B

44.5 min - 78 % B

55 min - 78 % B

Detector: Ultimate 3000

Excitation wavelength: 448 nm

Emission wavelength: 510 nm

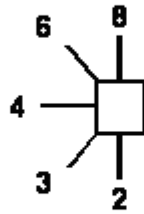
*Symbol for sugar*

- Glc
- GlcNAc
- ★ NeuNAc
- ◇ Gal
- ◆ GalNAc
- ◊ Fuc (deoxy galactose)
- Man
- △ Xylose

*Fluorescent label*

—APTS 8-Aminopyrene-1,3,6-trisulfonic acid

*Linkage position*



*Linkage type*

- β-linkage
- ..... α-linkage
- ~ unknown β-linkage
- ~ unknown α-linkage

Figure 2: GlycoBase glycan structure key.