

Certificate of Analysis

LudgerPure™ APTS Labeled NGA2F Glycan

Cat. #: CAPTS-NGA2F-01

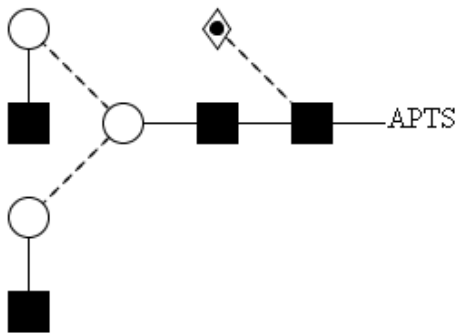
Batch: B281-02

Size: ~ 20 pmol

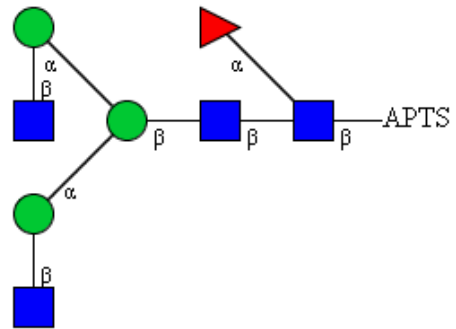
Alternative Names

FA2 and G0F

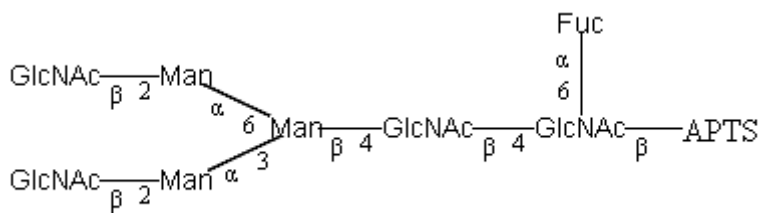
Structure



Oxford Notation



CFG Notation



Text Notation

{The Oxford Notation glycan structure is drawn according to the scheme developed by Oxford-Dublin Glycobiology Laboratory (see Fig 2)}.

Purity: > 80 % APTS labelled NGA2F glycan, as assessed by uHPLC - see Figure 1.

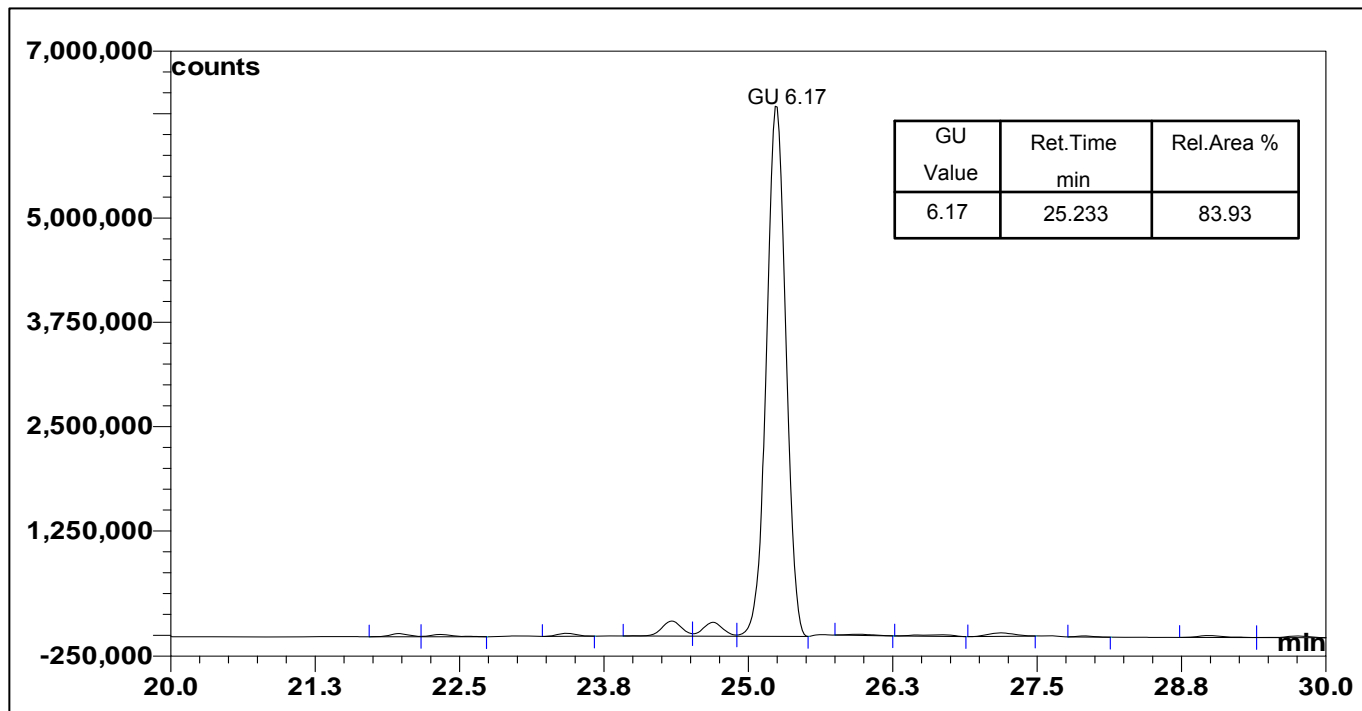


Figure 1: BEH UPLC profile of APTS Labelled NGA2F Glycan (Cat. #: CAPTS-NGA2F-01, Batch # B281-02).

NGA2F glycan structure identified by uHPLC. (GU value obtained from running internal GHP labelled with APTS).

The APTS labelled NGA2F glycan peak (figure 1) eluted at 25.233 minutes under the following uHPLC conditions:

Column: Waters BEH UPLC column, 1.7 μ M

Flow: 0.5 ml/min

Temperature: 60 °C

Solvent A: 50 mM Ammonium formate pH 4.4

Solvent B: 100 % Acetonitrile

Gradient:

- 0 min - 78 % B
- 38.5 min – 55.9 % B
- 40.5 min - 0 % B
- 42.5 min - 0 % B
- 44.5 min - 78 % B
- 55 min - 78 % B

Detector: Ultimate 3000

Excitation wavelength: 448 nm

Emission wavelength: 510 nm

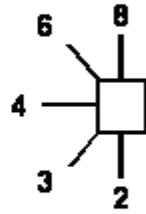
Symbol for sugar

- Glc
- GlcNAc
- ★ NeuNAc
- ◇ Gal
- ◆ GalNAc
- ◊ Fuc (deoxy galactose)
- Man
- △ Xylose

Fluorescent label

—APTS 8-Aminopyrene-1,3,6-trisulfonic acid

Linkage position



Linkage type

- β-linkage
- α-linkage
- ~ unknown β-linkage
- ~ unknown α-linkage

Figure 2: GlycoBase glycan structure key.