

## Certificate of Analysis

### LudgerPure™ APTS Labeled A1F Glycan

Cat. #: CAPTS –A1F-01

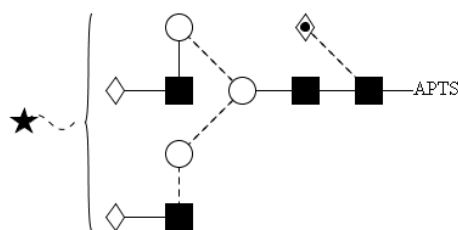
Batch: B28A-02

Size: ~ 20 pmol

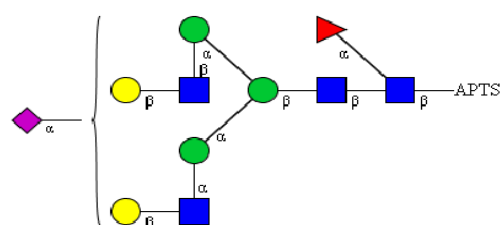
#### Alternative Names

FA2G2S1 – G1F

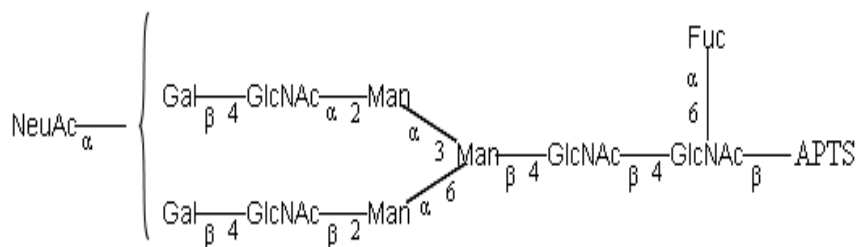
#### Structure



Oxford Notation



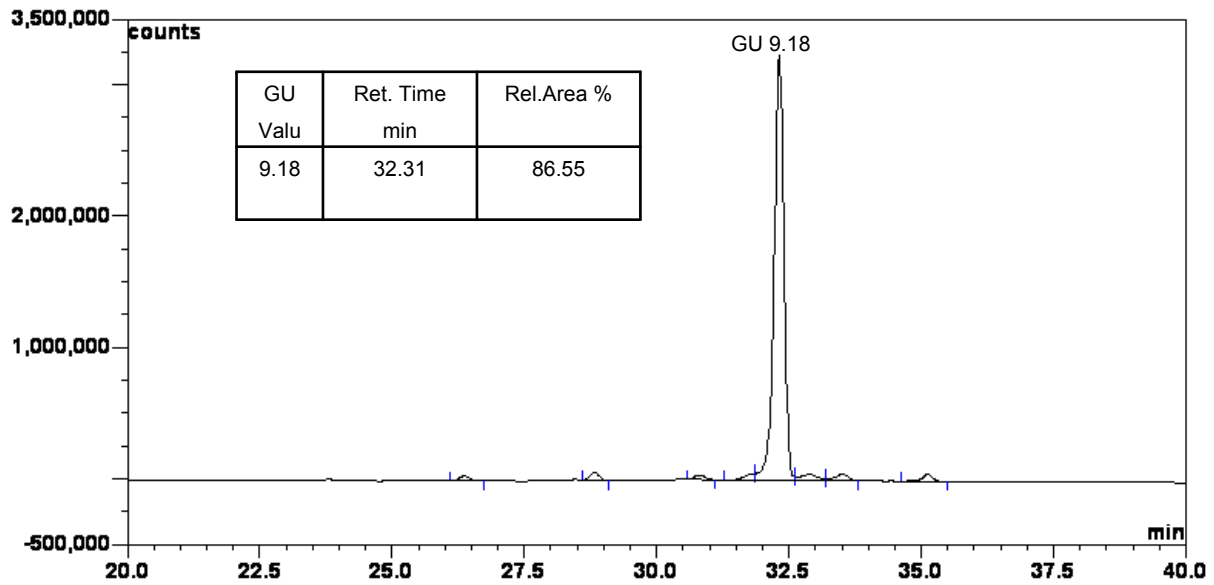
CFG Notation



#### Text Notation

{The Oxford Notation glycan structure is drawn according to the scheme developed by Oxford-Dublin Glycobiology Laboratory (see Fig 2)}.

**Purity:** > 80.00% APTS labelled A1F glycan, as assessed by uHPLC - see Fig 1.



**Figure 1: BEH uHPLC profile of APTS Labelled A1F Glycan (Cat. #: CAPTS-A1F-01, Batch # B28A-02).**

A1F glycan structure identified by uHPLC (GU value obtained from running internal GHP labelled with APTS).

The APTS labelled A1F glycan peak (figure 1) eluted at 32.31minutes under the following uHPLC conditions:

Column: Waters BEH uHPLC column, 1.7 µM

Flow: 0.5 ml/min

Temperature: 60 °C

Solvent A: 50 mM Ammonium formate pH 4.4

Solvent B: 100 % Acetonitrile

Gradient:

- 0 min - 78 % B
- 38.5 min – 55.9 % B
- 40.5 min - 0 % B
- 42.5 min - 0 % B
- 44.5 min - 78 % B
- 55 min - 78 % B

Detector: Ultimate 3000

Excitation wavelength: 448 nm

Emission wavelength: 510 nm

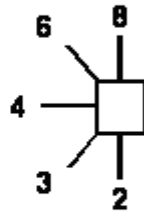
*Symbol for sugar*

- Glc
- GlcNAc
- ★ NeuNAc
- ◇ Gal
- ◆ GalNAc
- ◊ Fuc (deoxy galactose)
- Man
- △ Xylose

*Fluorescent label*

— APTS 8-Aminopyrene-1,3,6-trisulfonic acid

*Linkage position*



*Linkage type*

- β-linkage
- ..... α-linkage
- ~ unknown β-linkage
- ~ unknown α-linkage

Figure 2 : GlycoBase glycan structure key.