

## Certificate of Analysis

### LudgerPure™ 2AB Labeled NA2 Glycan

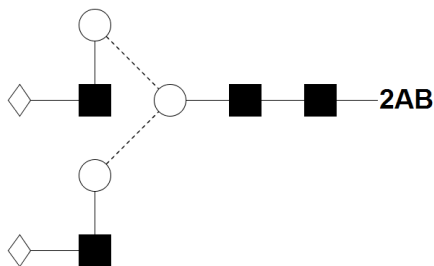
Cat. #: CAB-NA2-01  
Size: approx. 100 pmol

Batch: B96B-04  
Expiry Date: 12 Jun 2024

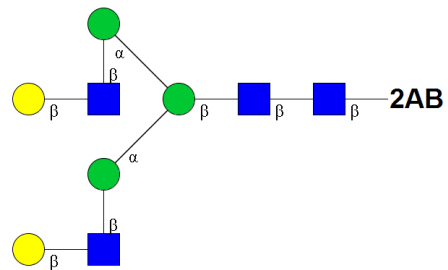
#### Alternative Names

A2G2, G2

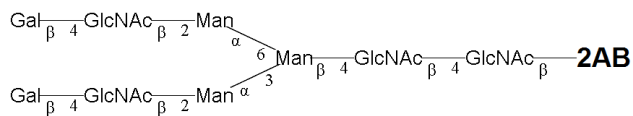
#### Glycan Structure



*Oxford Notation*



*CFG Notation*



*Text Notation*

**Purity:** 91.2% 2AB labeled NA2 glycan, as assessed by HPLC - see Fig 1.

**Amount:** Sample vial determined to contain 114 pmols NA2 glycan – Test performed 14 Jun 2019.

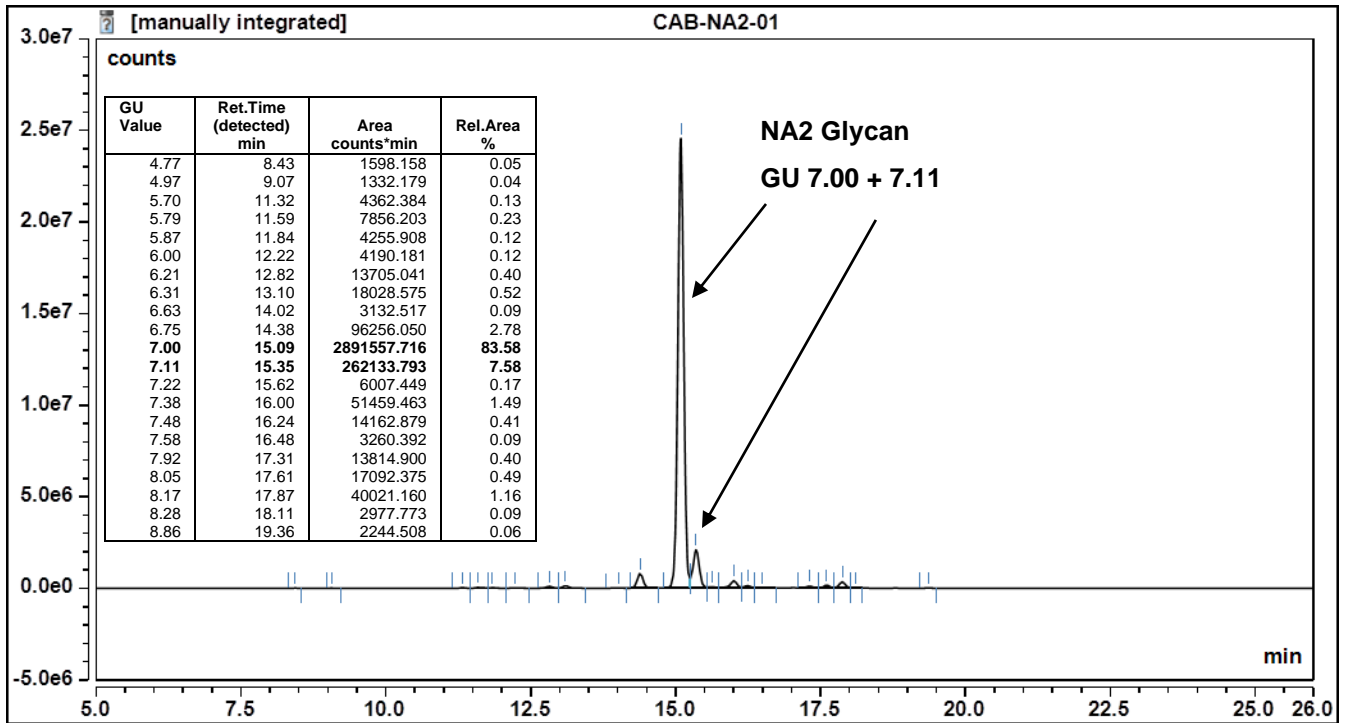


Figure 1: HILIC HPLC profile of 2AB labelled NA2 glycan (see method conditions below) (Cat. #: CAB-NA2-01, Batch B96B-04).

\*NA2 glycan structure identified by MALDI, MS & HPLC (GU value comparison to GlycoBase). This structure is drawn according to the scheme developed by Oxford-Dublin Glycobiology Laboratory (see Fig 2).

2-AB NA2 peak seen above, eluted at 15.09 and 15.35 minutes, under the following conditions:

Column: Waters BEH Glycan 1.7µm column (150mm)

Flow: 0.56mL/min.

Temperature: 60 °C

Solvent A: 50mM ammonium formate pH 4.4 Solvent B: 100 % acetonitrile

Gradient:

Time (min)	%B
0.0	78.0
1.5	78.0
24.8	58.0
25.8	40.0
25.9	78.0
31.0	78.0

Detector: Fluorescence

Excitation wavelength: 250 nm

Emission wavelength: 428 nm

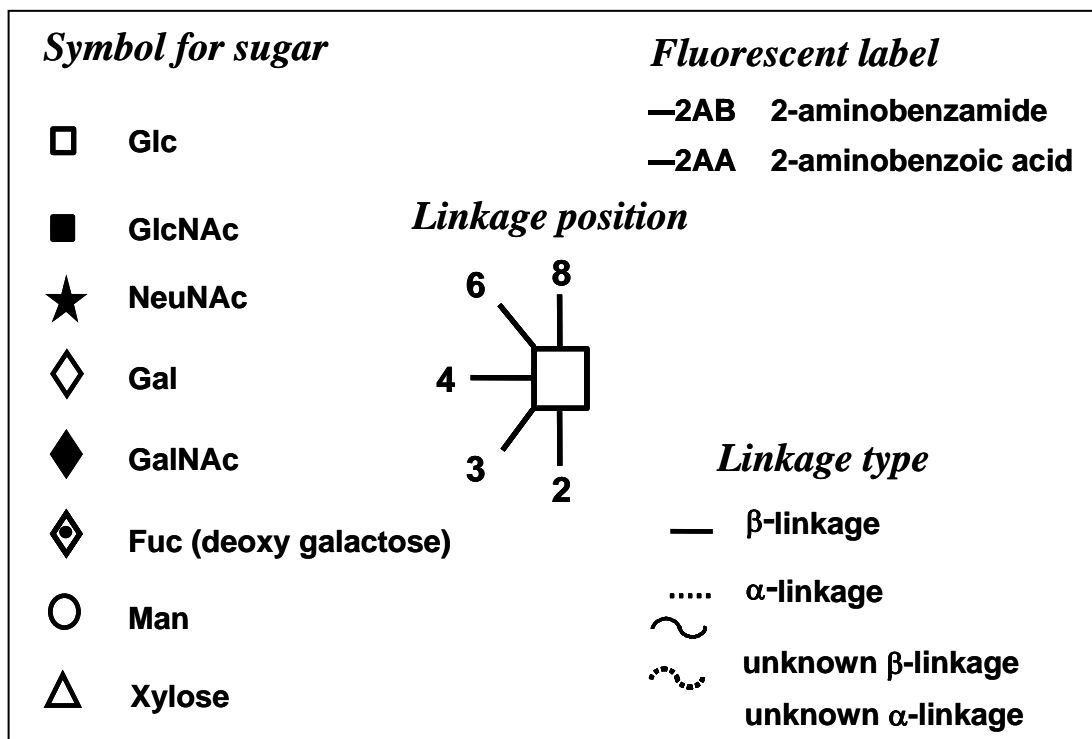


Figure 2: GlycoBase glycan structure key.