

## Certificate of Analysis

### LudgerPure™ 2AB Labeled MAN6 Glycan

Cat. #: CAB-MAN6-01

Batch: B6AE-01

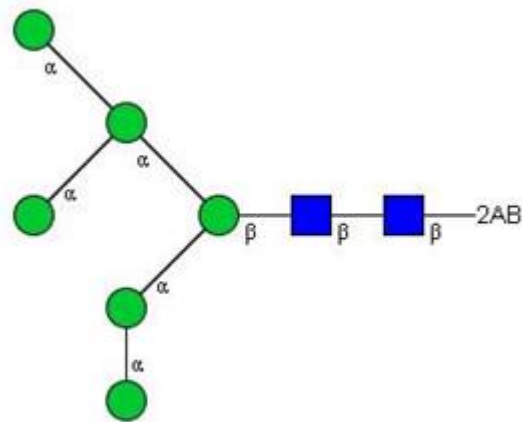
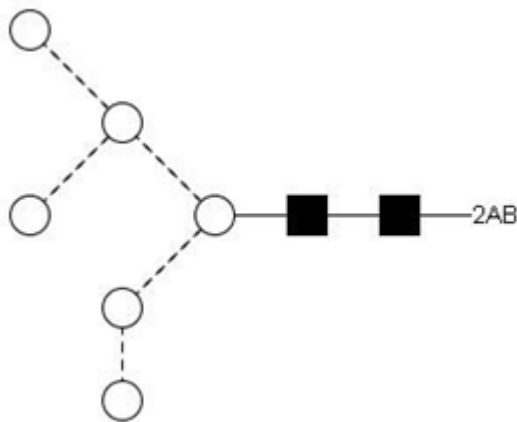
Size: approx. 100 pmol

Expiry Date: 14 Oct 2021

#### Alternative Names

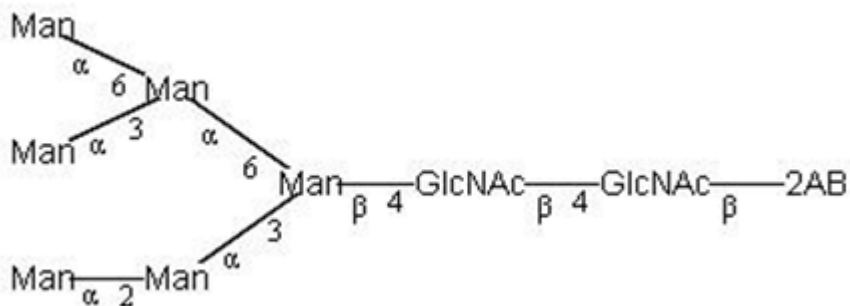
M6

#### Structure



Oxford Notation

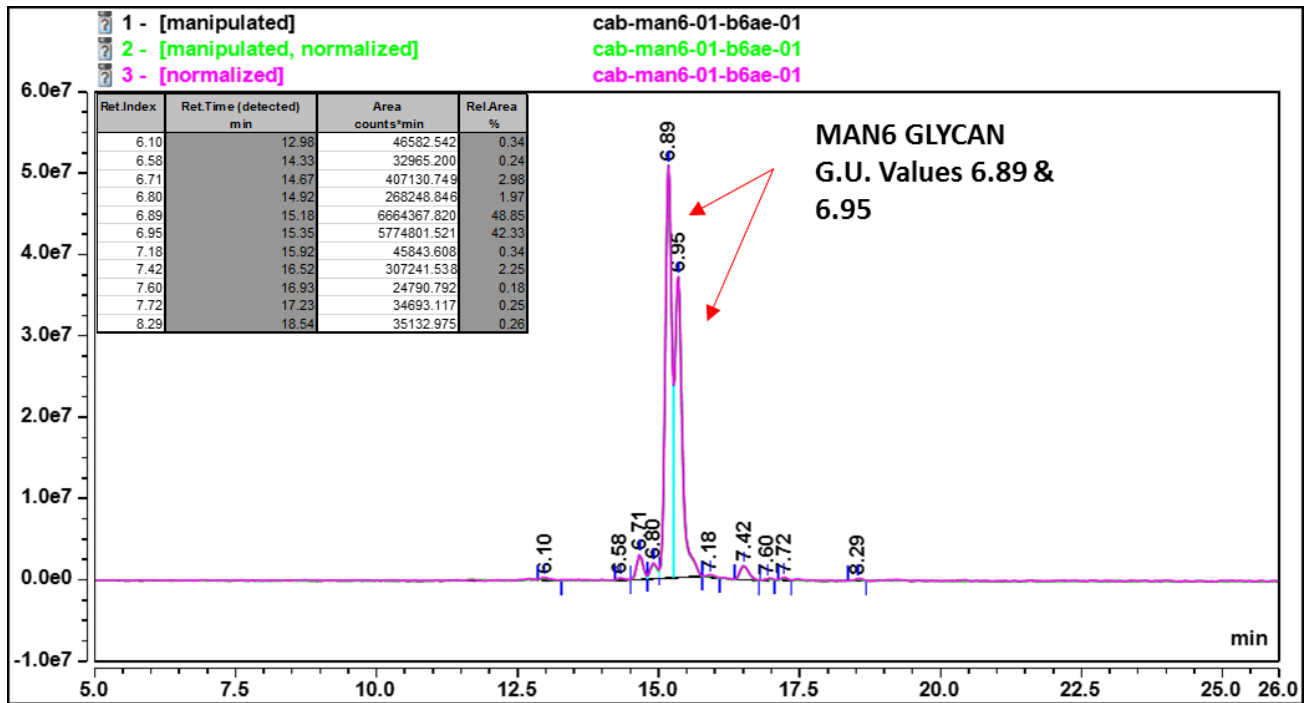
CFG Notation



Text Notation

**Purity:** 90.68% 2AB labeled MAN6 glycan, as assessed by HPLC - see Fig 1.

**Amount:** Sample vial determined to contain 96.3 pmols MAN6 glycan – Test performed 21<sup>ST</sup> October 2016.



**Figure 1:** HILIC HPLC profile of 2AB labelled MAN6 glycan (see method conditions below)

(Cat. #: CAB-MAN6-01, Batch B6AE-01).

*\*MAN6 glycan structure identified by MALDI, MS & HPLC (GU value comparison to GlycoBase). This structure is drawn according to the scheme developed by Oxford-Dublin Glycobiology Laboratory (see Fig 2).*

**2-AB MAN6 peak seen above, eluted at 15:18 & 15:35 minutes, under the following conditions:**

Column: Waters BEH Glycan 1.7µm column (150mm)

Flow: 0.56mL/min.

Temperature: 60 °C

Solvent A: 50mM ammonium formate pH 4.4      Solvent B: 100 % acetonitrile

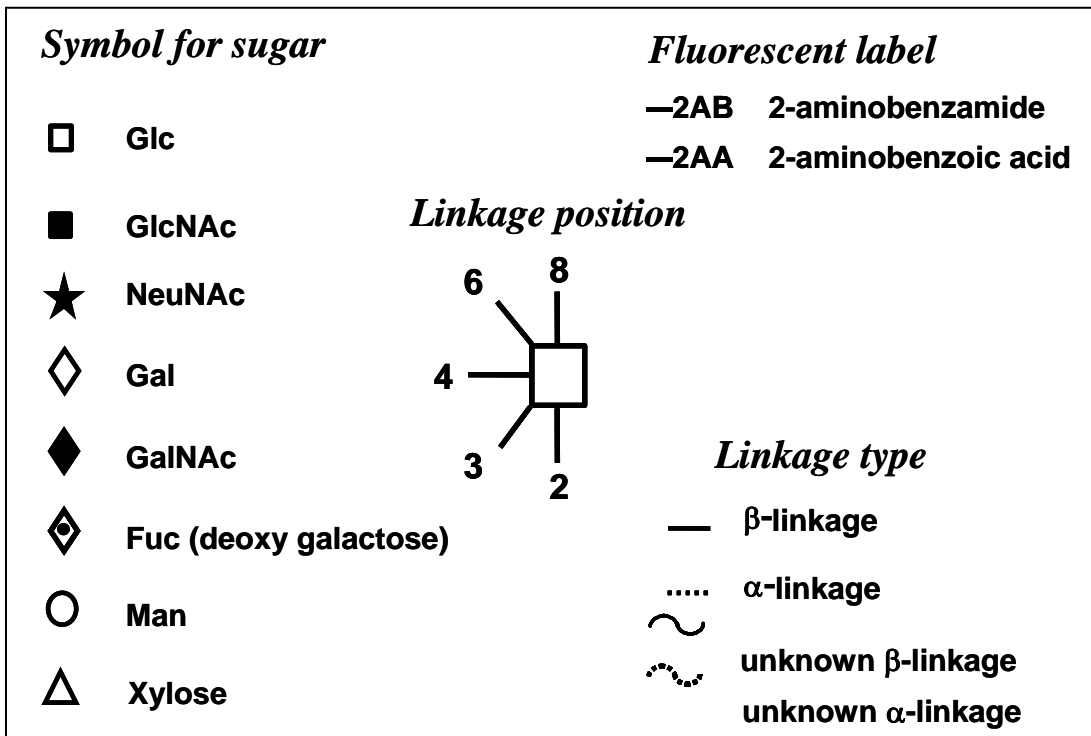
Gradient:

Time (min)	%B
0.0	78.0
1.5	78.0
24.8	58.0
25.8	40.0
25.9	78.0
31.0	78.0

Detector: Dionex FLD-3000

Excitation wavelength: 250 nm

Emission wavelength: 428 nm



**Figure 2:** GlycoBase glycan structure key.