



Certificate of Analysis

LudgerPure™ 2AB Labeled MAN6 Glycan

Cat. # : CAB-MAN6-01

Lot # : B01D-03

Size : approx. 100 pmol

Purity: > 90% 2AB labeled MAN6 glycan, as assessed by HPLC - see Fig 1.

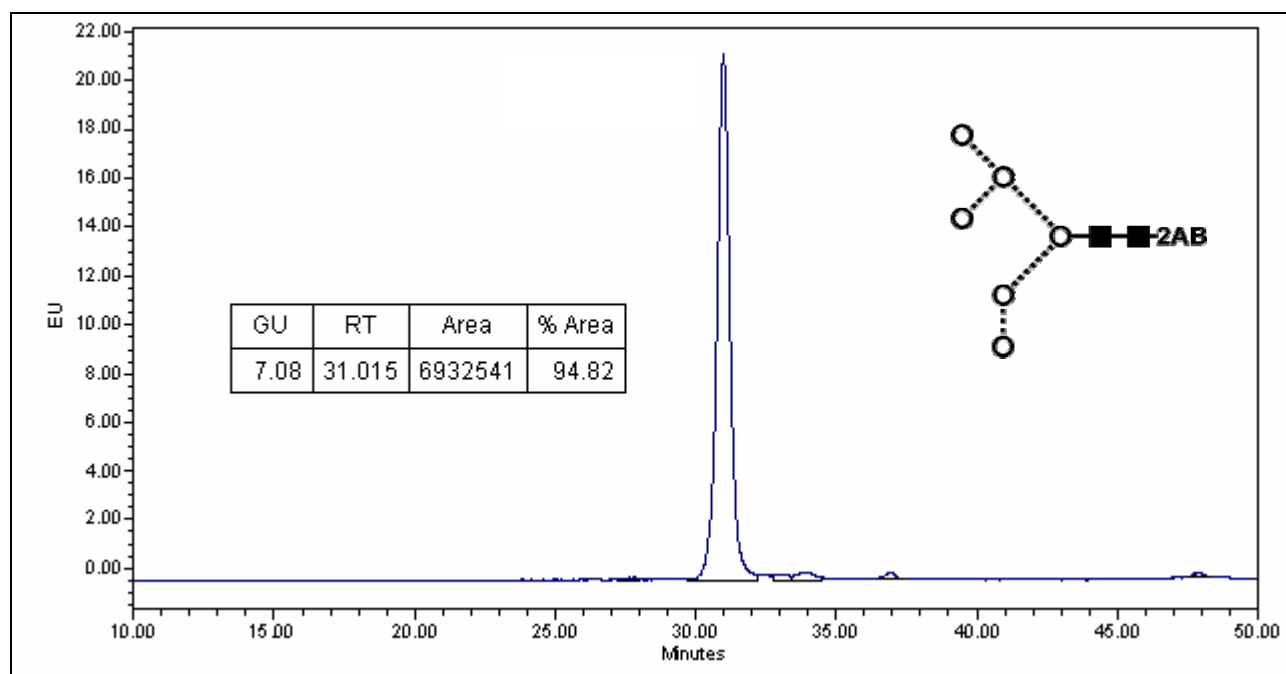


Figure 1 : LudgerSepN2 HPLC profile of 2AB labeled MAN6 glycan (Cat. #: CAB-MAN6-01, Lot No. B01D-03).

**MAN6 glycan structure identified by MALDI MS & HPLC (GU value comparison to GlycoBase). This structure is drawn according to the scheme developed by Oxford-Dublin Glycobiology Laboratory (see Fig 2).*

2-AB MAN6 peak seen above, eluted at 31.0 minutes, under the following conditions:

HPLC Running Conditions:

Column: 2 x LudgerSep N2 Amide (Cat. #: LS-N2-2.0x150)

Flow: 0.18 ml/min.

Temperature: 35 °C

Solvent A: 50 mM ammonium formate pH 4.4 Solvent B: 100 % acetonitrile

Gradient:

- 0 min – 70 % B
- 46 min – 47 % B
- 46.5 min – 0 % B
- 51 min – 70% B
- 60 min – 70 % B
- 65 min -70 % B

Detector: Waters 2475 Excitation wavelength: 330 nm

Emission wavelength: 420 nm

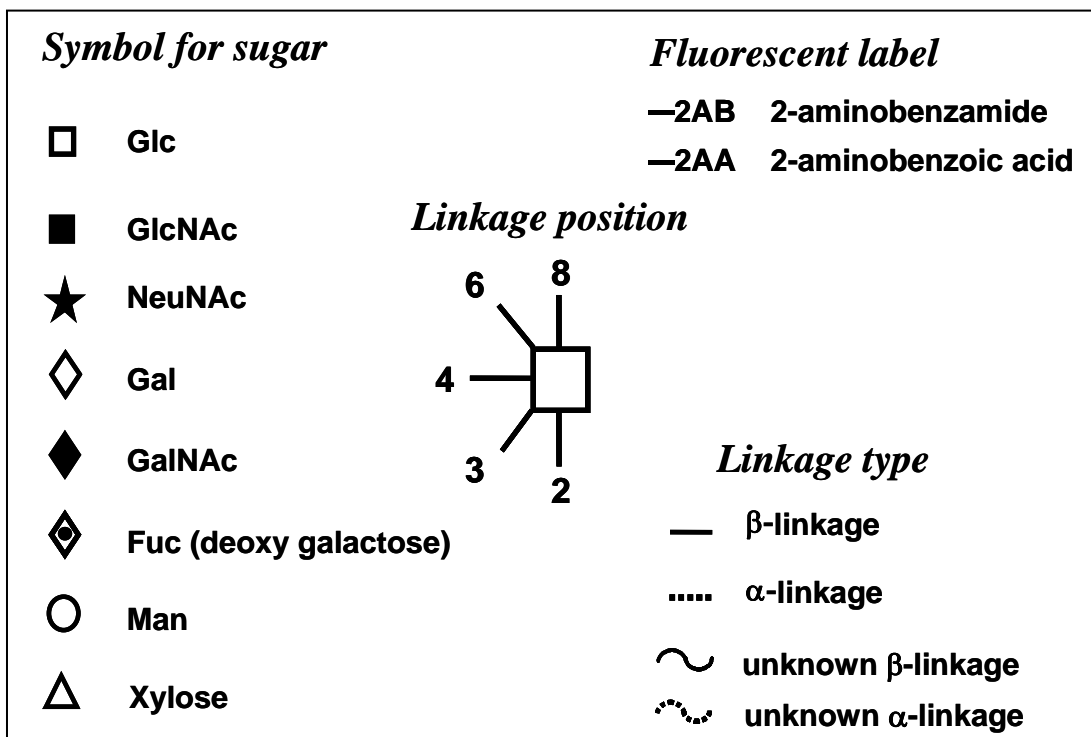


Figure 2 : GlycoBase glycan structure key.