

## Certificate of Analysis

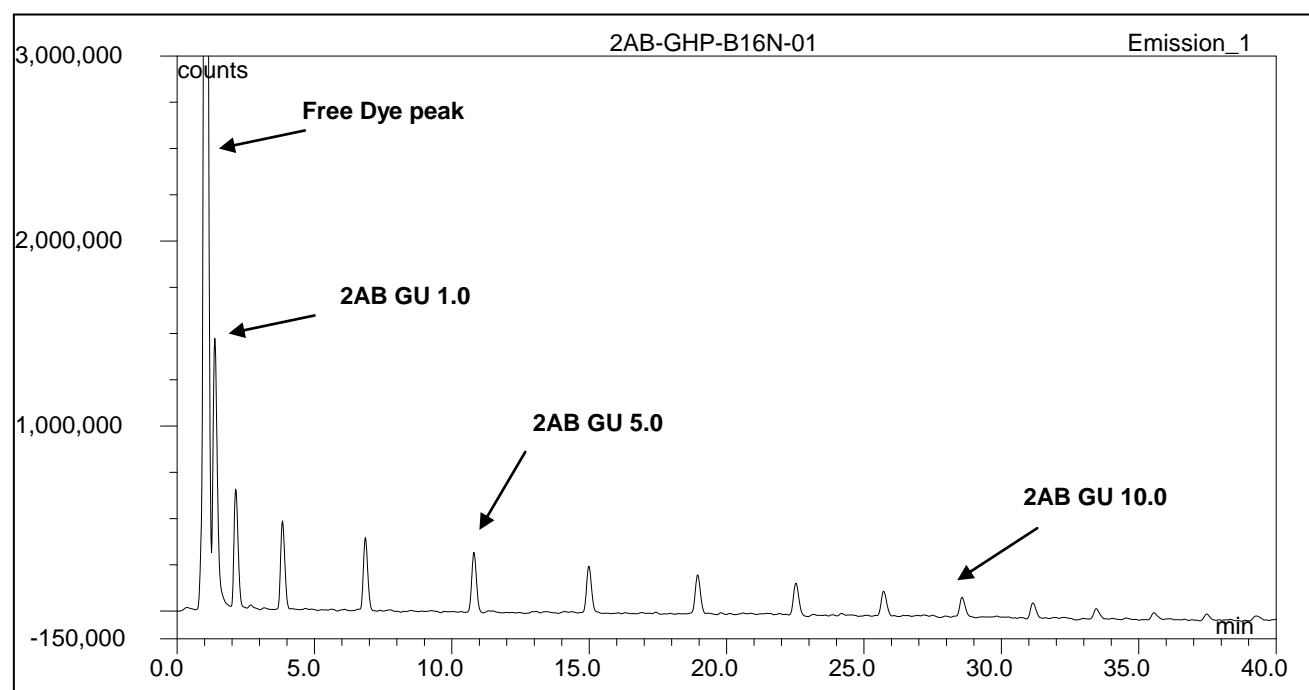
### 2-AB (2-aminobenzamide) Labeled Glucose Homopolymer Ladder

Cat. #: CAB-GHP-30

Batch #: B16N-01

Size: 30

**Purity:** > 95% pure as assessed by HPLC (see Fig 1).



**Figure 1** : HILIC HPLC profile of 2AB labeled Glucose Homopolymer ladder

(Cat. #: CAB-GHP-30, Lot No. B16N-01).

#### HPLC Running Conditions:

Column: Waters BEH Glycan column (1.7 $\mu$ m-2.1x150)

Flow: 0.5 mL/min (unless indicated below)

Solvent A: 100 % acetonitrile

Solvent B: 50 mM ammonium formate pH 4.4

Temperature: 60 °C.

#### Gradient:

0 min – 78% B, 38.5 min – 55.9% B, 40.5 min – 0% B flow 0.25mL/min, 42.5 min – 0% B flow 0.25mL/min, 44.5 min – 78% B flow 0.25mL/min, 50.5 min – 78% B flow 0.25mL/min, 51.5 min 78% B, 55 min - 78% B

Detector: Dionex FLD-3000

Excitation wavelength: 330 nm

Emission wavelength: 420 nm

Sample: CAB-GHP-30 reconstituted in 300 $\mu$ L water; 5 $\mu$ L sample diluted with 17 $\mu$ L water and 78 $\mu$ L acetonitrile, injecting 25 $\mu$ L of this mix.