

## Certificate of Analysis

### LudgerPure™ 2AB Labeled A2G1 Glycan

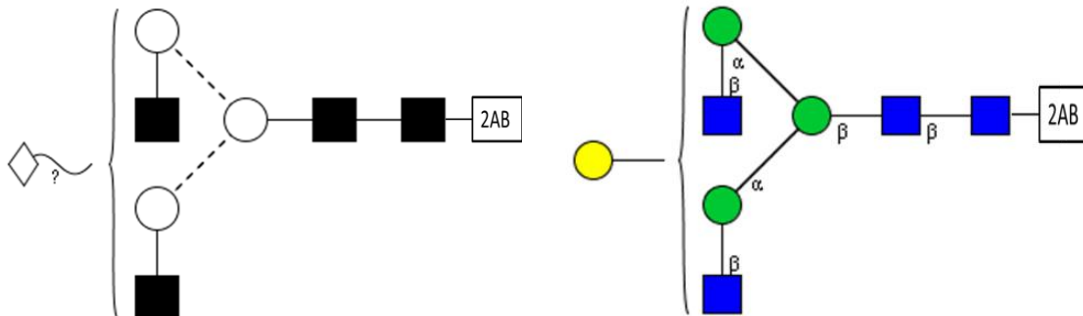
Cat. #: CAB-A2G1-01  
 Size: approx. 100 pmol

Batch: B7AK-01  
 Expiry Date: 27<sup>TH</sup> Oct 2022

#### Alternative Names

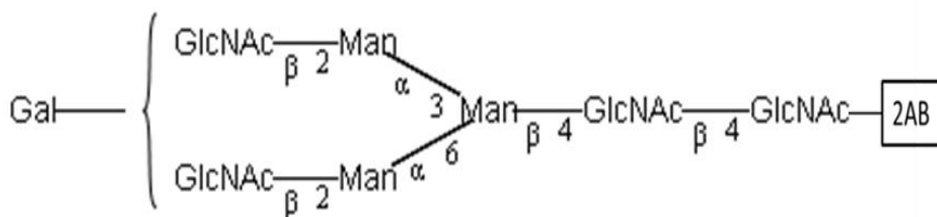
G1

#### Structure



Oxford Notation

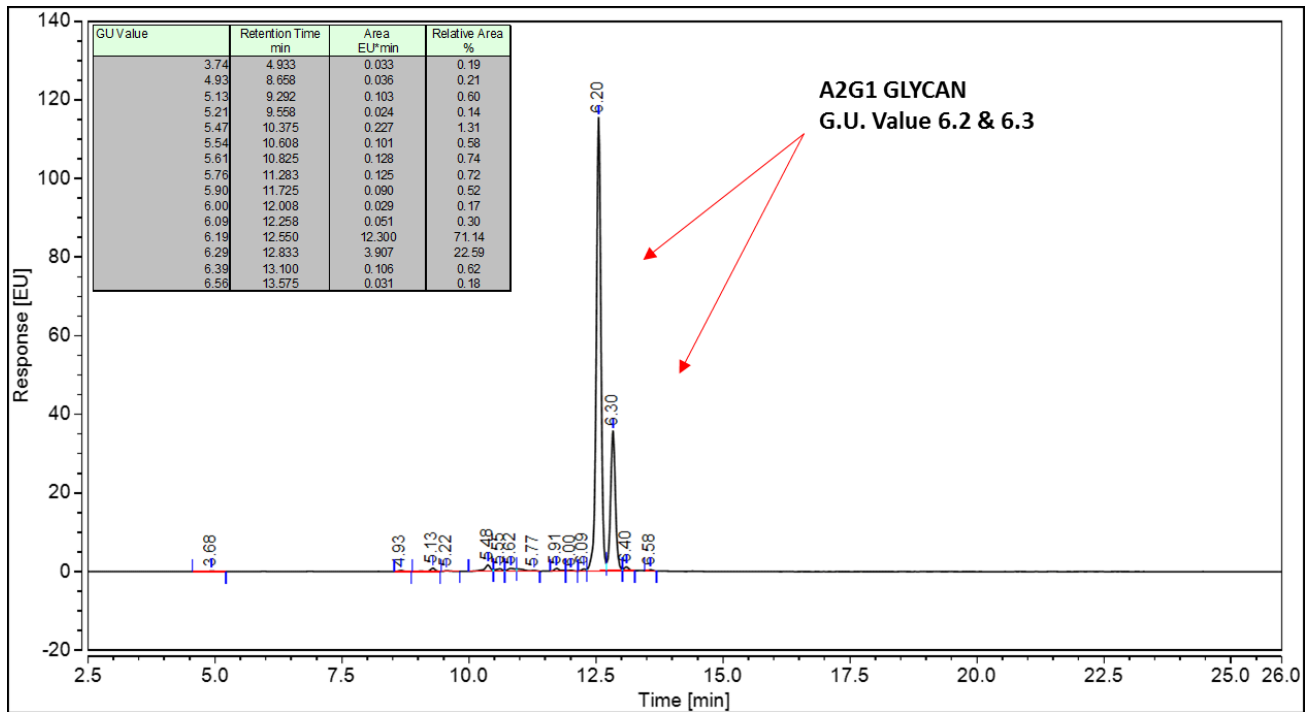
CFG Notation



Text Notation

**Purity:** 93.06% 2AB labeled A2G1 glycan, as assessed by HPLC - see Fig 1.

**Amount:** Sample vial determined to contain 124.6 pmols A2G1 glycan – Test performed 27<sup>TH</sup> Oct 2017.



**Figure 1:** HILIC HPLC profile of 2AB labelled A2G1 glycan (see method conditions below)

(Cat. #: CAB-A2G1-01, Batch B7AK-01).

\*A2G1 glycan structure identified by MALDI, MS & HPLC (GU value comparison to GlycoBase). This structure is drawn according to the scheme developed by Oxford-Dublin Glycobiology Laboratory (see Fig 2).

**2AB A2G1 peak seen above, eluted at 12.55-12.83 minutes, under the following conditions:**

Column: Waters BEH Glycan 1.7µm column (150mm)

Flow: 0.56mL/min.

Temperature: 60 °C

Solvent A: 50mM ammonium formate pH 4.4      Solvent B: 100 % acetonitrile

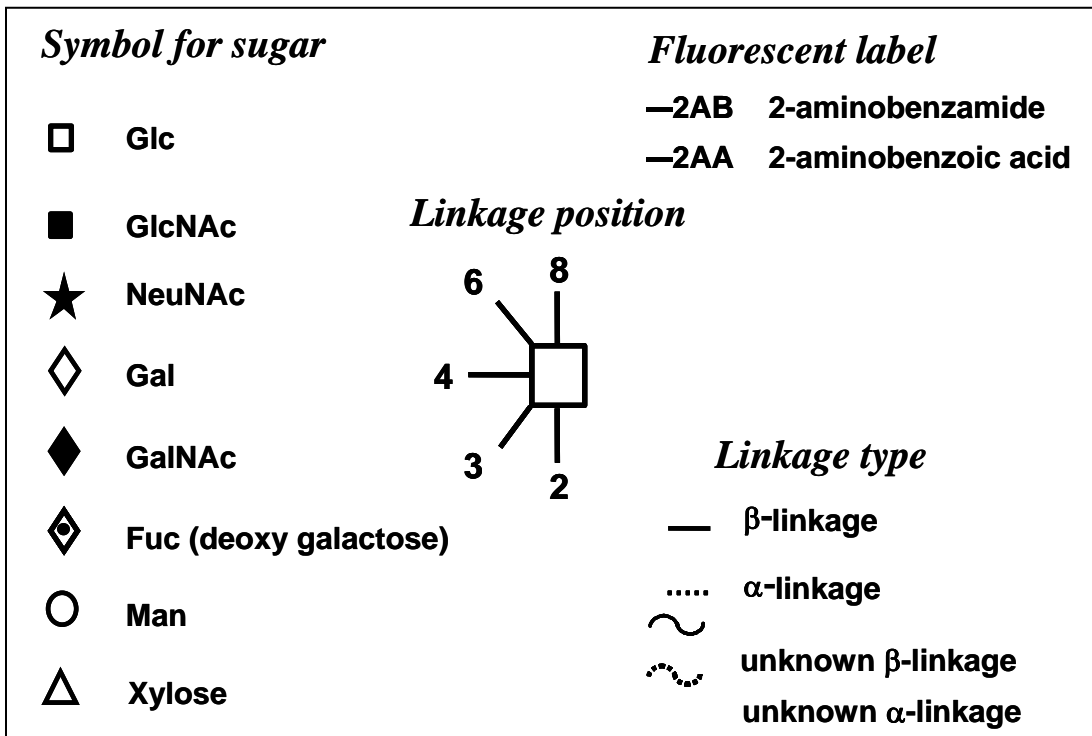
Gradient:

Time (min)	%B
0.0	78.0
1.5	78.0
24.8	58.0
25.8	40.0
25.9	78.0
31.0	78.0

Detector: Dionex FLD-3000

Excitation wavelength: 250 nm

Emission wavelength: 428 nm



**Figure 2:** GlycoBase glycan structure key.