

## Certificate of Analysis

### LudgerPure™ 2AB Labeled A2G1 Glycan

Cat. #: CAB-A2G1-01

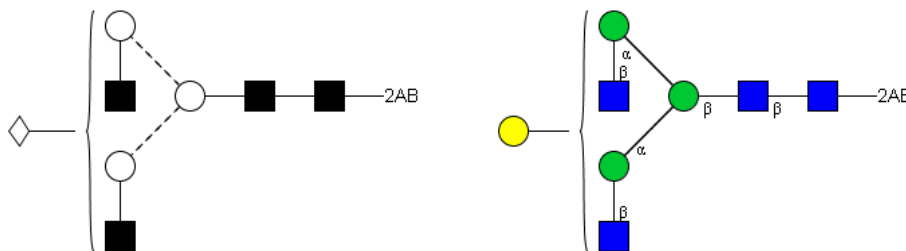
Batch: B085-03

Size: approx. 100 pmol

#### Alternative Names

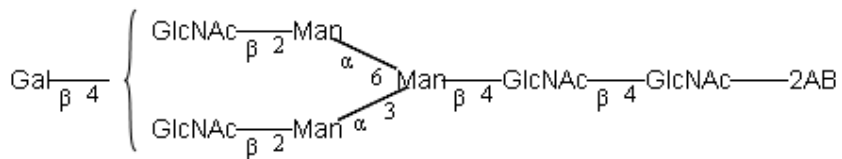
G1

#### Structure



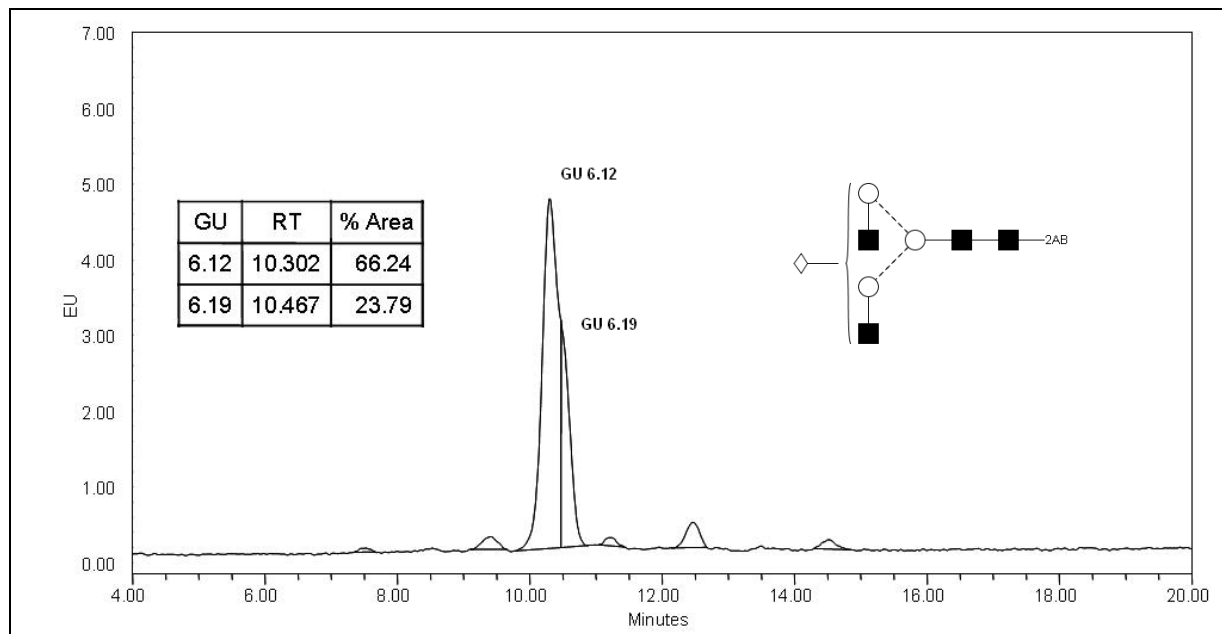
Oxford Notation

CFG Notation



Text Notation

**Purity:** > 90% 2AB labeled A2G1 glycan, as assessed by HPLC - see Fig 1.



**Figure 1** : LudgerSepN2 HPLC profile of 2AB labeled A2G1 glycan (Cat. #: CAB-A2G1-01, Batch B085-03).

*A2G1 glycan structure identified by MALDI-MS & HPLC (GU value comparison to GlycoBase). This structure is drawn according to the scheme developed by Oxford-Dublin Glycobiology Laboratory (see Fig 2).*

**2-AB A2G1 peaks seen above, eluted at 10.3 and 10.5 minutes, under the following conditions:**

**HPLC Running Conditions:**

Column: 2 x LudgerSep N2 Amide (Cat. #: LS-N2-4.6x150)

Flow: 1 ml/min.

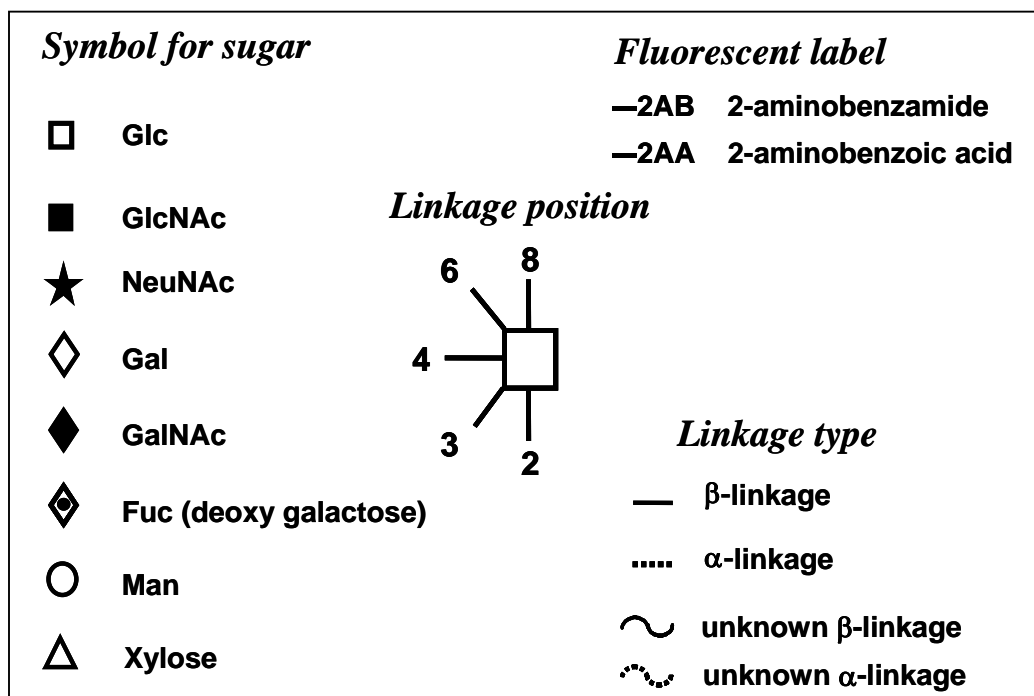
Temperature: 35 °C

Solvent A: 50 mM ammonium formate pH 4.4    Solvent B: 100 % acetonitrile

Gradient:

- 0 min – 65 % B
- 22.5 min – 54 % B
- 24.5 min – 0 % B
- 26 min – 65% B
- 30 min – 65 % B

Detector: Waters 2475    Excitation wavelength: 330 nm    Emission wavelength: 420 nm



**Figure 2 :** GlycoBase glycan structure key.