

Certificate of Analysis

LudgerPure™ 2AB Labeled A2F Glycan

Cat. #: CAB-A2F-01

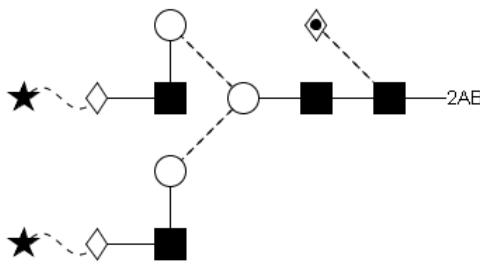
Batch: B16A-02

Size: approx. 100 pmol

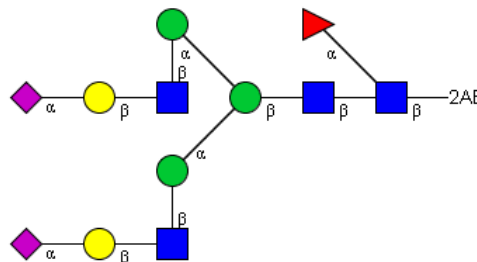
Alternative Names

FA2G2S2

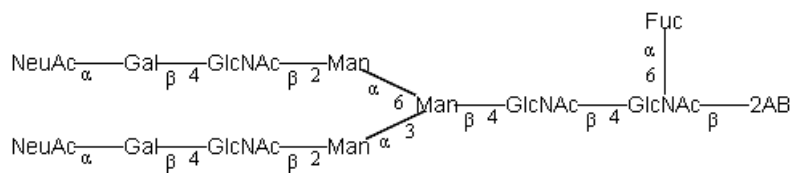
Structure



Oxford Notation



CFG Notation



Text Notation

Purity: > 90% 2AB labeled A2F glycan, as assessed by HPLC - see Fig 1.

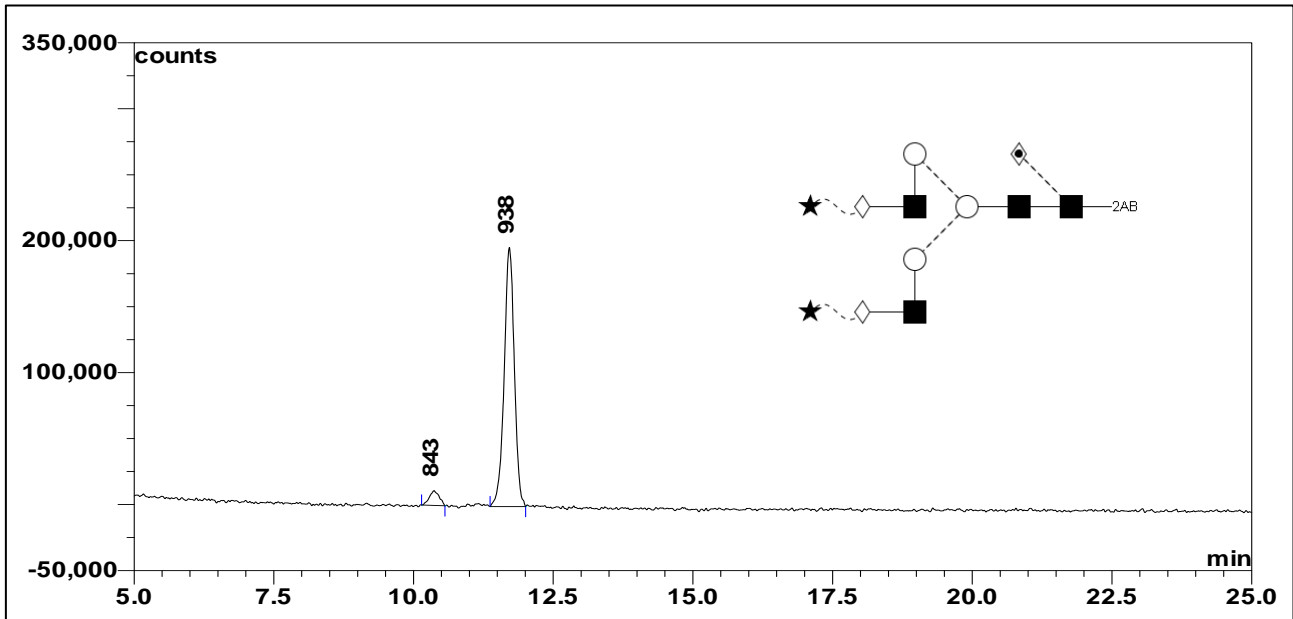


Figure 1: LudgerSepN2 HPLC profile of 2AB labeled A2F glycan
(Cat. #: CAB-A2F-01, Batch B16A-02).

**A2F glycan structure identified by MALDI, MS & HPLC (GU value comparison to GlycoBase). This structure is drawn according to the scheme developed by Oxford-Dublin Glycobiology Laboratory (see Fig 2).*

2-AB A2F peak seen above, eluted at 11.72 minutes, under the following conditions:

HPLC Running Conditions:

Column: LudgerSep N2 Amide (Cat. #: LS-N2-2.0x150)

Flow: 0.3 ml/min.

Temperature: 40 °C

Solvent A: 50 mM ammonium formate pH 4.4 Solvent B: 100 % acetonitrile

Gradient:

- 0 min – 65 % B
- 25 min – 40 % B
- 25.5 min – 0 % B
- 27.5 min – 0% B
- 29.5 min – 65 % B
- 35.1 min – 65 % B

Detector: Dionex FLD-3000

Excitation wavelength: 330 nm

Emission wavelength: 420 nm

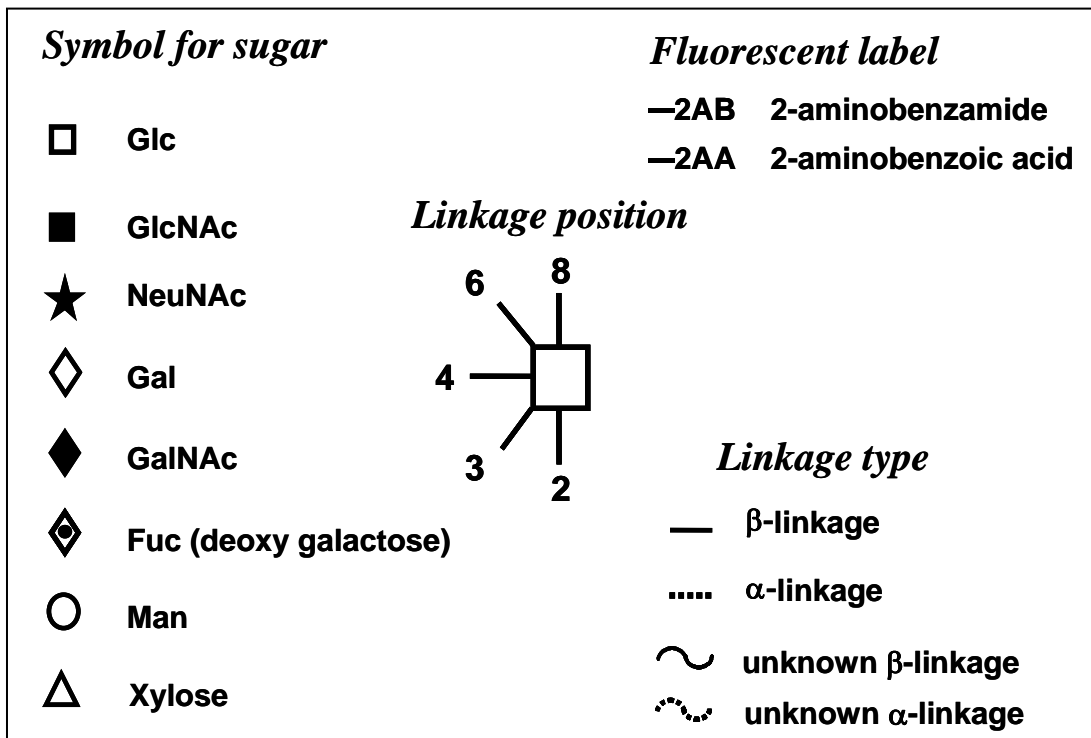


Figure 2: GlycoBase glycan structure key.