

Certificate of Analysis

LudgerPure™ 2AB Labeled A2 Glycan

Cat. #: CAB-A2-01

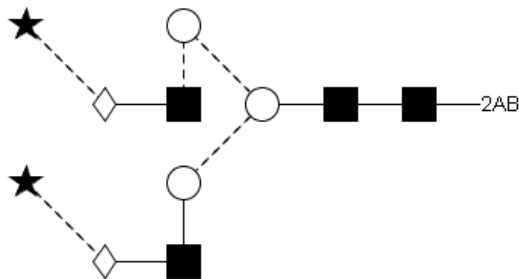
Batch : B0B2-02

Size : approx. 100 pmol

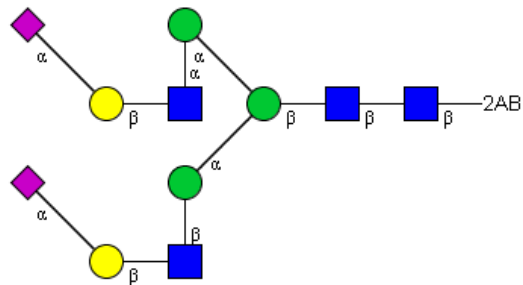
Alternative Names

A2G2S2

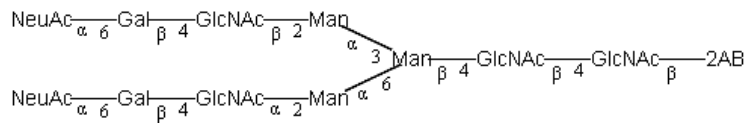
Structure



Oxford Notation



CFG Notation



Text Notation

Purity: > 90% 2AB labeled A2 glycan, as assessed by HPLC - see Fig 1.

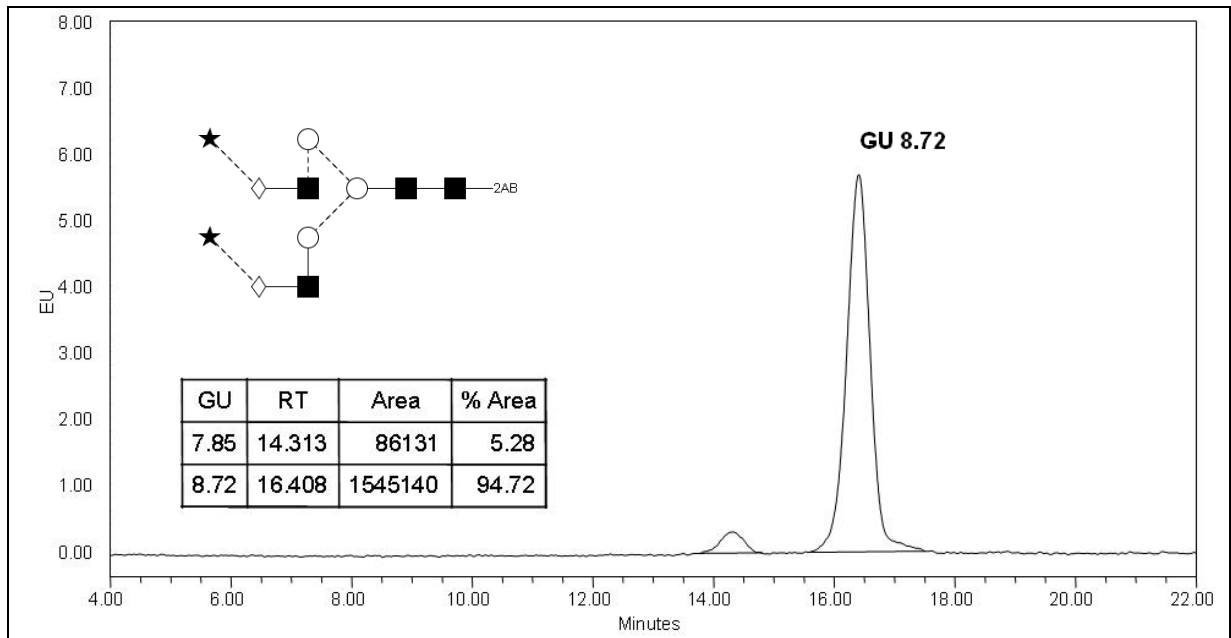


Figure 1 : LudgerSepN2 HPLC profile of 2AB labeled A2 glycan
(Cat. #: CAB-A2-01, Batch B0B2-02).

**A2 glycan structure identified by MALDI, MS & HPLC (GU value comparison to GlycoBase). This structure is drawn according to the scheme developed by Oxford-Dublin Glycobiology Laboratory (see Fig 2).*

2-AB A2 peak seen above, eluted at 16.4 minutes, under the following conditions:

HPLC Running Conditions:

Column: LudgerSep N2 Amide (Cat. #: LS-N2-4.6x150)

Flow: 1.0 ml/min.

Temperature: 35 °C

Solvent A: 50 mM ammonium formate pH 4.4 Solvent B: 100 % acetonitrile

Gradient:

- 0 min – 65 % B
- 22.5 min – 54 % B
- 24.5 min – 0 % B
- 26 min – 65% B
- 30 min – 65 % B
- 45 min – 65 % B

Detector: Waters 2475 Excitation wavelength: 330 nm

Emission wavelength: 420 nm

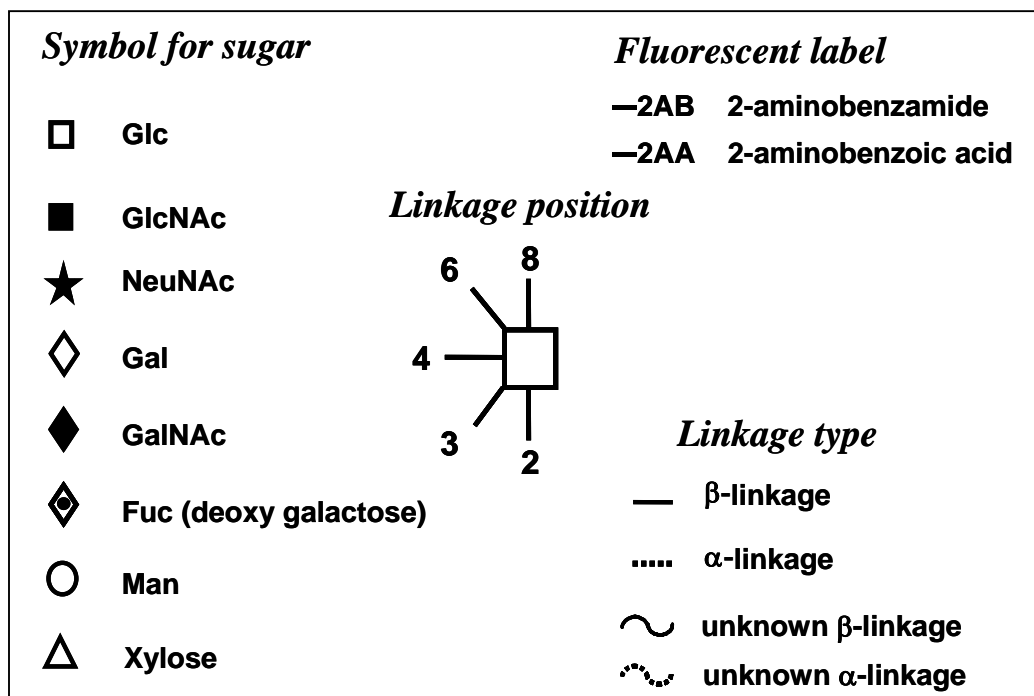


Figure 2 : GlycoBase glycan structure key.