

## Certificate of Analysis

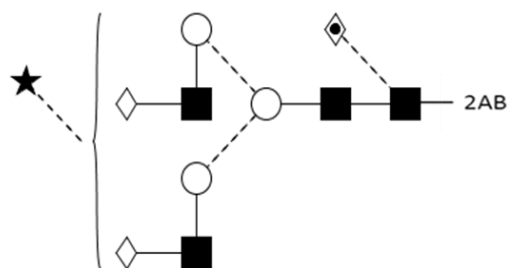
### LudgerPure™ 2AB Labeled A1F Glycan

Cat. #: CAB-A1F-01

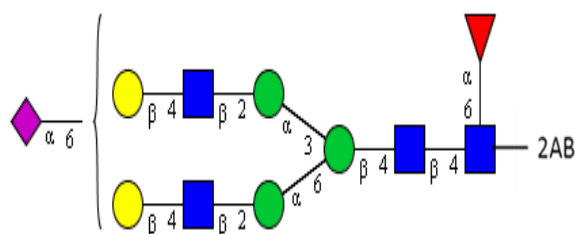
Batch: B71U-03

Size: approx. 100 pmol

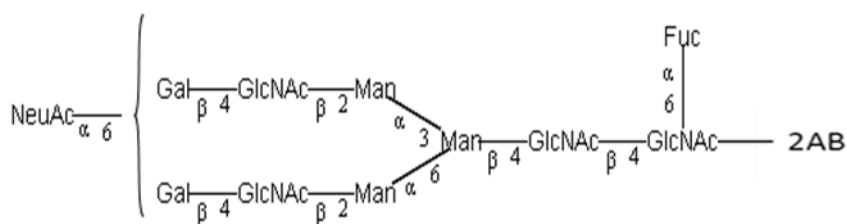
#### Structure



Oxford Notation



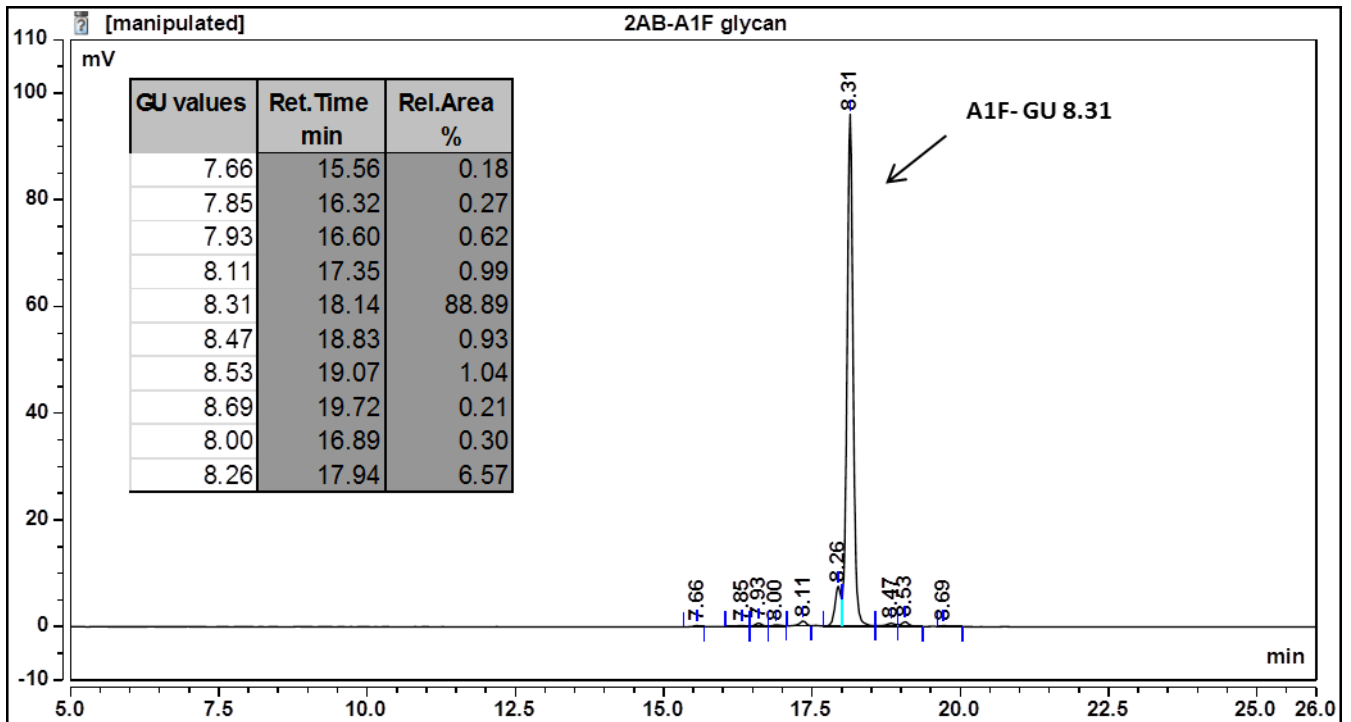
CFG Notation



#### Text Notation

**Purity:** 88.89% 2AB labeled A1F glycan, as assessed by UHPLC - see Fig 1.

**Amount:** Sample vial determined to contain 115.8 pmols A1F glycan – Test performed 8<sup>th</sup> February 2017.



**Figure 1:** HILIC HPLC profile of 2AB labelled A1F glycan (see method conditions below)  
 (Cat. #: CAB-A1F-01, Batch B71U-03).

*\*A1F glycan structure identified by MALDI, MS & HPLC (GU value comparison to GlycoBase). This structure is drawn according to the scheme developed by Oxford-Dublin Glycobiology Laboratory (see Fig 2).*

**2-AB A1F peak seen above, eluted at 18.14 minutes, under the following conditions:**

**HPLC Running Conditions:**

Column: Waters BEH Glycan 1.7µm column (150mm)

Flow: 0.56mL/min.

Temperature: 60 °C

Solvent A: 50mM ammonium formate pH 4.4

Solvent B: 100 % acetonitrile

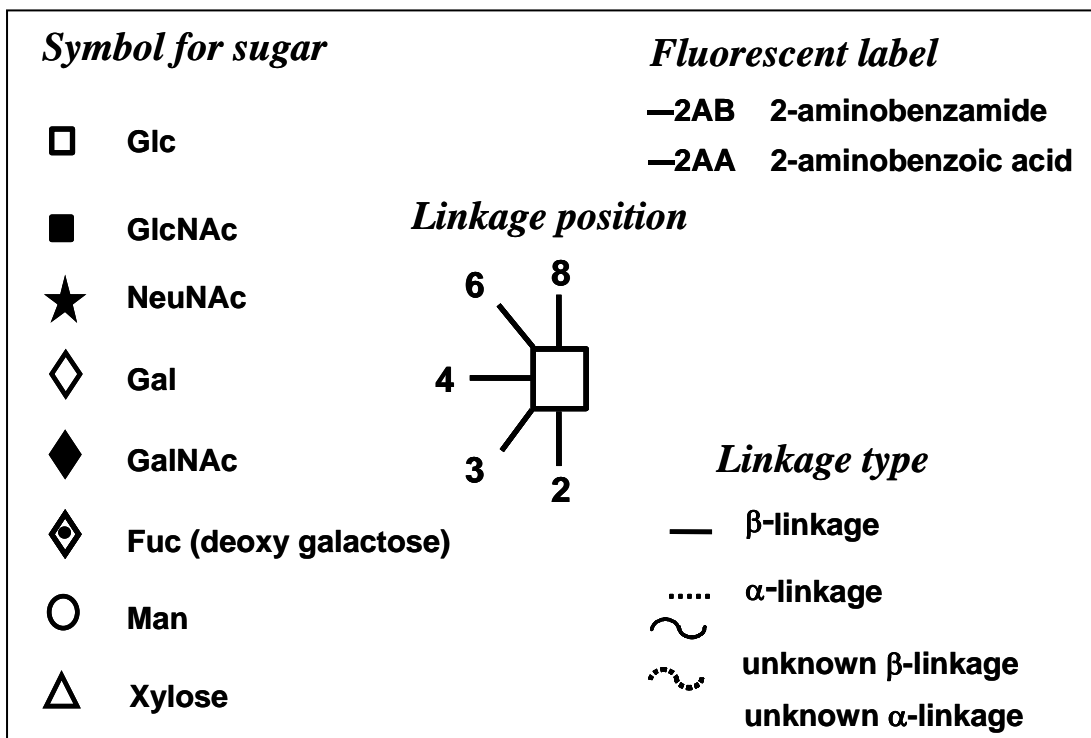
Gradient:

Time (min)	%B
0.0	78.0
1.5	78.0
24.8	58.0
25.8	40.0
25.9	78.0
31.0	78.0

Detector: Dionex FLD-3000

Excitation wavelength: 250 nm

Emission wavelength: 428 nm



**Figure 2:** GlycoBase glycan structure key.