

## Certificate of Analysis

### LudgerPure™ 2AB Labeled C1S(3,6)2 Glycan

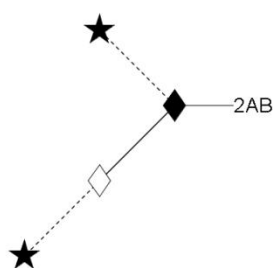
Cat. #: CAB-C1S(3,6)2-01

Batch: B7CE-03

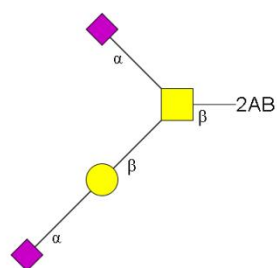
Size: approx. 100 pmol

Expiry Date: 12 Dec 2022

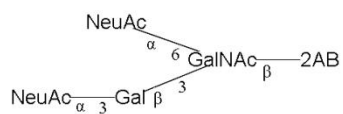
#### Structure



*Oxford Notation*



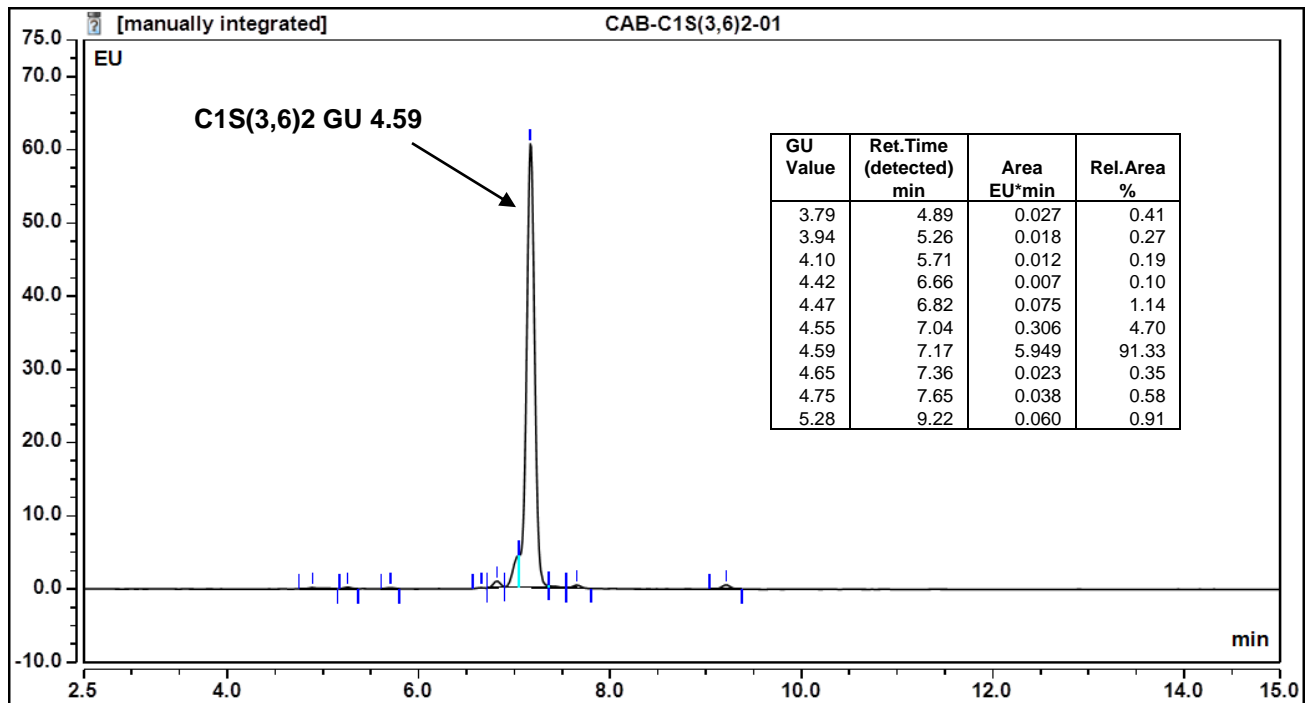
*CFG Notation*



*Text Notation*

**Purity:** 91.3% 2AB labeled C1S(3,6)2 glycan, as assessed by HPLC - see Fig 1.

**Amount:** Sample vial determined to contain 100.7 pmols C1S(3,6)2 glycan – Test performed 14 Dec 2017.



**Figure 1:** HILIC HPLC profile of 2AB labelled C1S(3,6)2 glycan (see method conditions below)

(Cat. #: CAB-C1S(3,6)2-01, Batch B7CE-03).

\*C1S(3,6)2 glycan structure identified by MALDI, MS & HPLC (GU value comparison to GlycoBase). This structure is drawn according to the scheme developed by Oxford-Dublin Glycobiology Laboratory (see Fig 2).

**2-AB C1S(3,6)2 peak seen above, eluted at 7.17 minutes, under the following conditions:**

Column: Waters BEH Glycan 1.7µm column (150mm)

Flow: 0.56mL/min.

Temperature: 60 °C

Solvent A: 50mM ammonium formate pH 4.4      Solvent B: 100 % acetonitrile

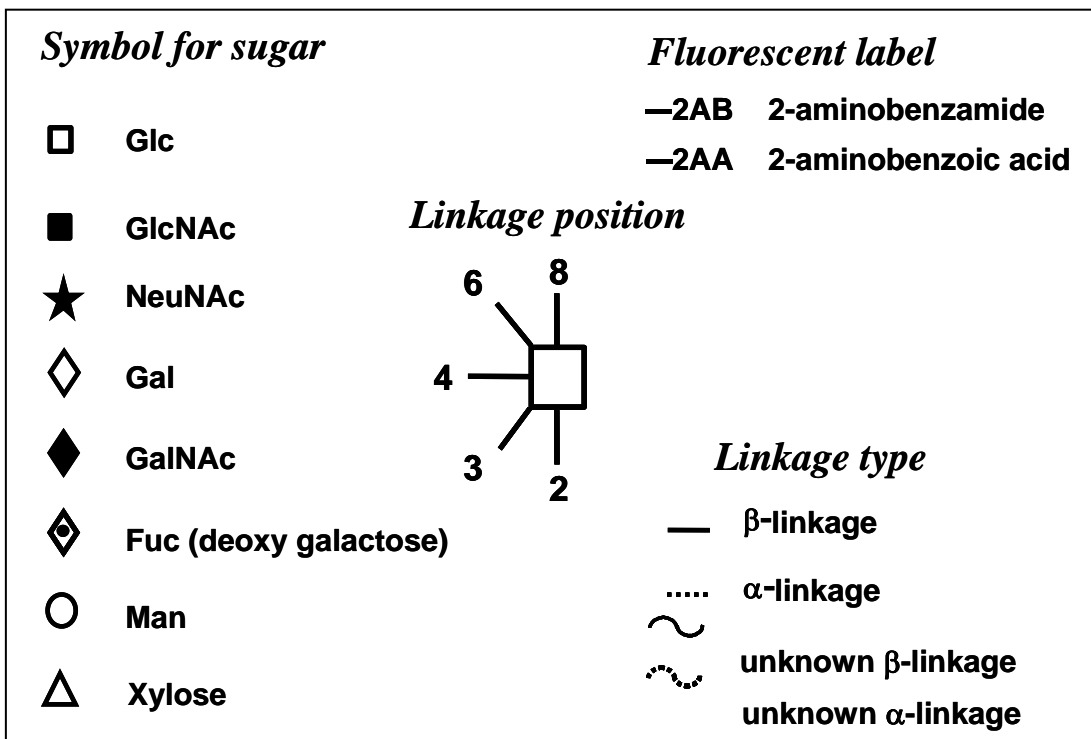
Gradient:

Time (min)	%B
0.0	78.0
1.5	78.0
24.8	58.0
25.8	40.0
25.9	78.0
31.0	78.0

Detector: Dionex FLD-3000

Excitation wavelength: 250 nm

Emission wavelength: 428 nm



**Figure 2:** GlycoBase glycan structure key.