

Certificate of Analysis

LudgerPure™ 2AB Labeled AlphaGal Glycan

Cat. #: CAB-AlphaGal-01

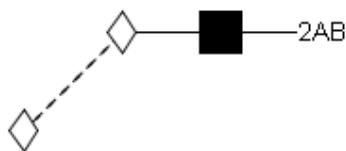
Batch: B0C1-01

Size: approx. 100 pmol

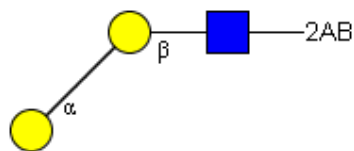
Alternative Names

Linear B2 trisaccharide

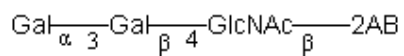
Structure



Oxford Notation



CFG Notation



Text Notation

Purity: > 85% 2AB labeled AlphaGal glycan, as assessed by HPLC - see Fig 1.

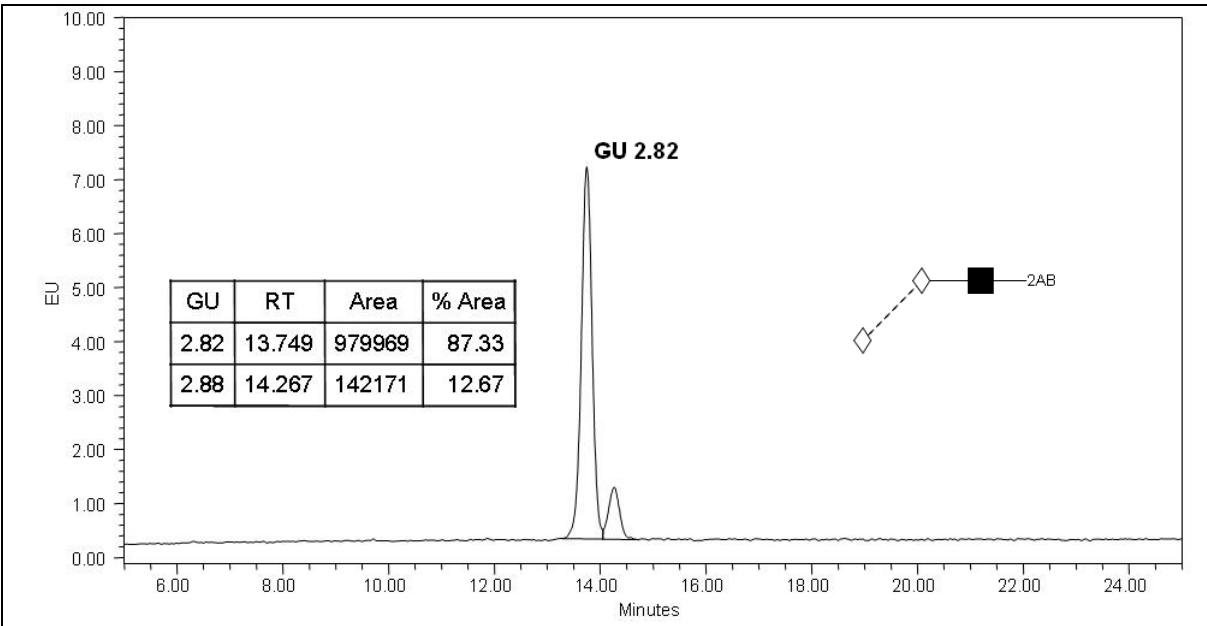


Figure 1 : LudgerSepN2 HPLC profile of 2AB labeled AlphaGal glycan (Cat. #: CAB -AlphaGal-01, Batch B0C1-01).

**AlphaGal glycan structure identified by MALDI, MS & HPLC (GU value comparison to GlycoBase). This structure is drawn according to the scheme developed by Oxford-Dublin Glycobiology Laboratory (see Fig 2).*

2-AB AlphaGal peak seen above, eluted at 13.7 minutes, under the following conditions:

HPLC Running Conditions:

Column: LudgerSep N2 Amide (Cat. #: LS-N2-4.6x150)

Flow: 1.0 ml/min.

Temperature: 35 °C

Solvent A: 50 mM ammonium formate pH 4.4 Solvent B: 100 % acetonitrile

Gradient:

- 0 min – 80 % B
- 36 min – 62 % B
- 36.5 min – 0 % B
- 38.5 min – 0% B
- 40 min – 80 % B
- 50 min – 80 % B

Detector: Waters 2475 Excitation wavelength: 330 nm

Emission wavelength: 420 nm

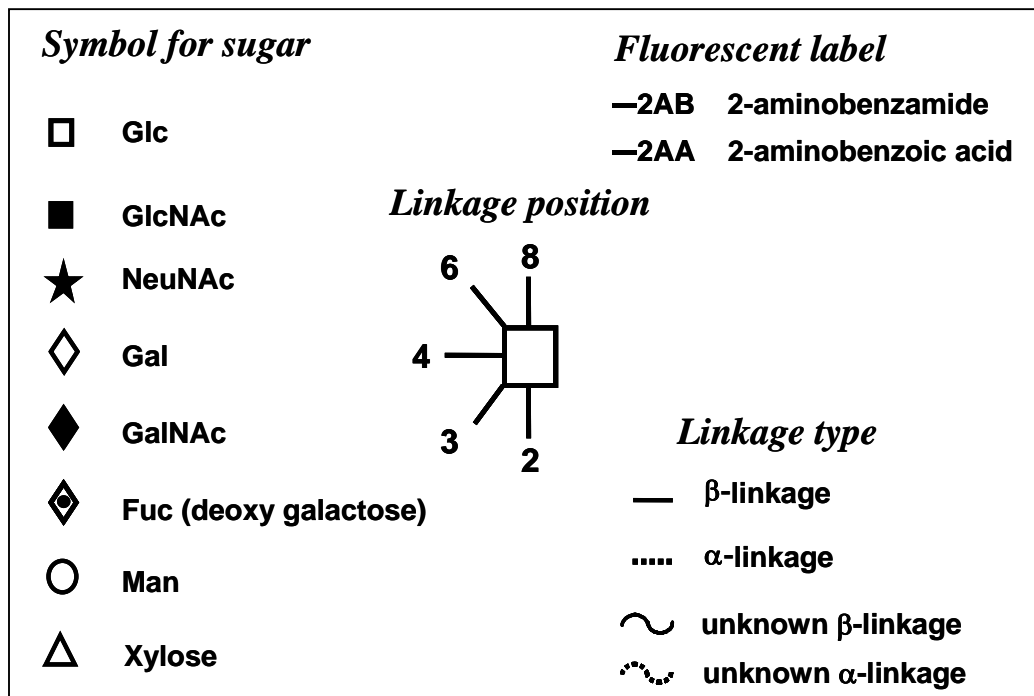


Figure 2: GlycoBase glycan structure key.