

Ludger

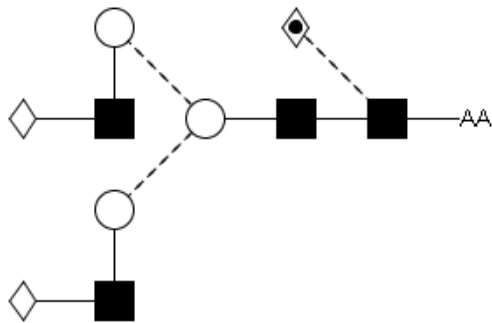
## Certificate of Analysis

### LudgerPure™ 2AA Labeled NA2F Glycan

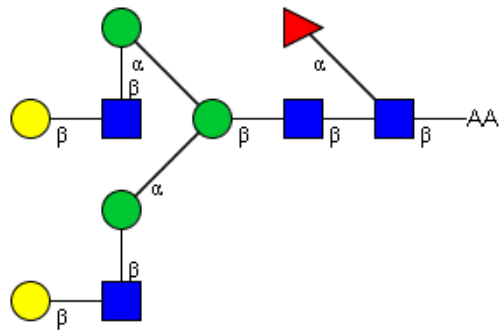
Cat. #: CAA-NA2F-01  
Size: approx. 100 pmol

Batch: A886-02  
Expiry: Jan 2021

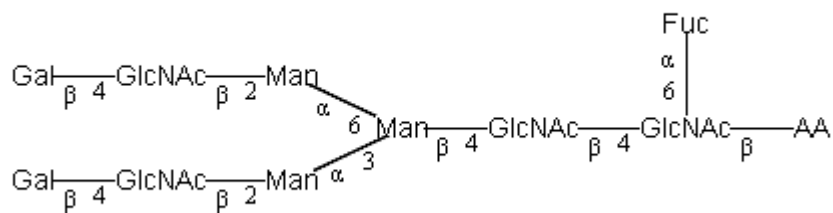
#### Structure



Oxford Notation

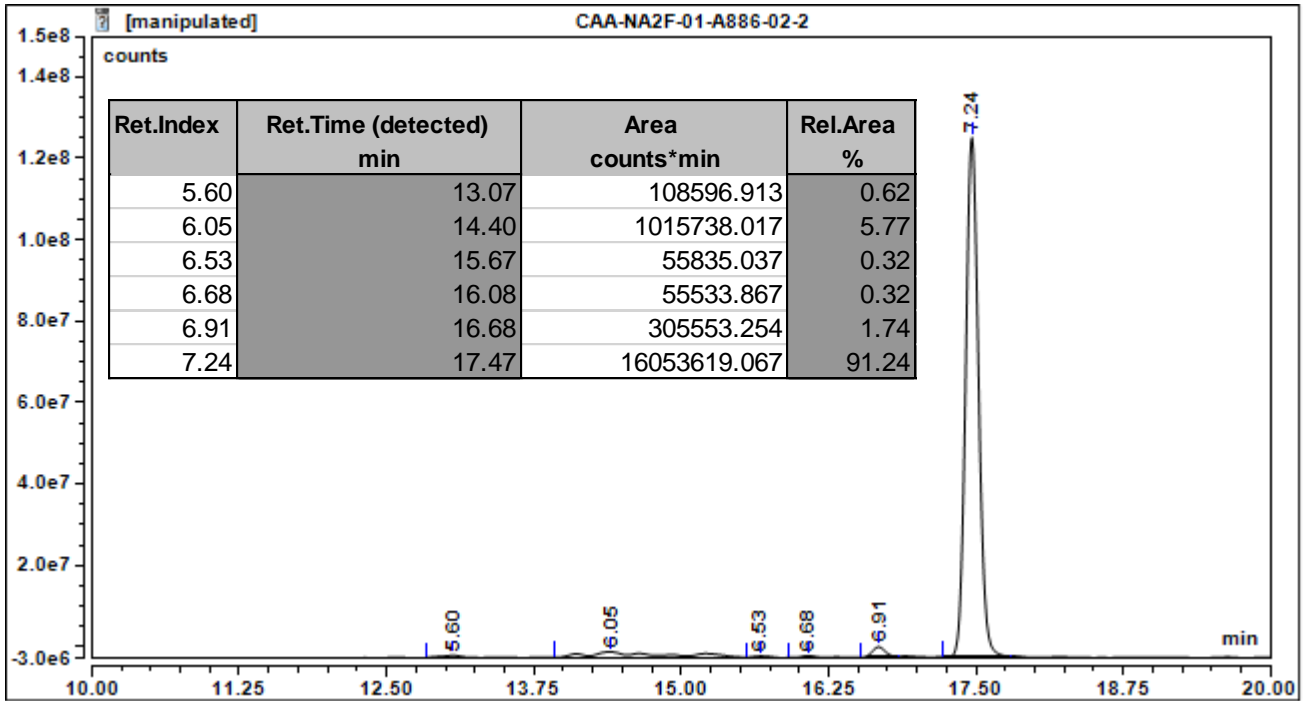


CFG Notation



Text Notation

**Purity:** 91.24% 2AA labeled NA2F glycan, as assessed by HPLC - see Fig 1.



**Figure 1:** HILIC HPLC profile of 2AA labelled NA2F glycan (see method conditions below)

(Cat. #: CAA-NA2F-01, Batch A886-02).

*\*NA2F glycan identified by MALDI, MS & HPLC (GU value comparison to GlycoBase, see Fig 2).*

**2-AA NA2F peak seen above, eluted at 17.47 minutes, under the following conditions:**

Column: Waters BEH Glycan 1.7µm column (150mm)

Flow: 0.56mL/min.

Temperature: 60 °C

Solvent A: 50mM ammonium formate pH 4.4      Solvent B: 100 % acetonitrile

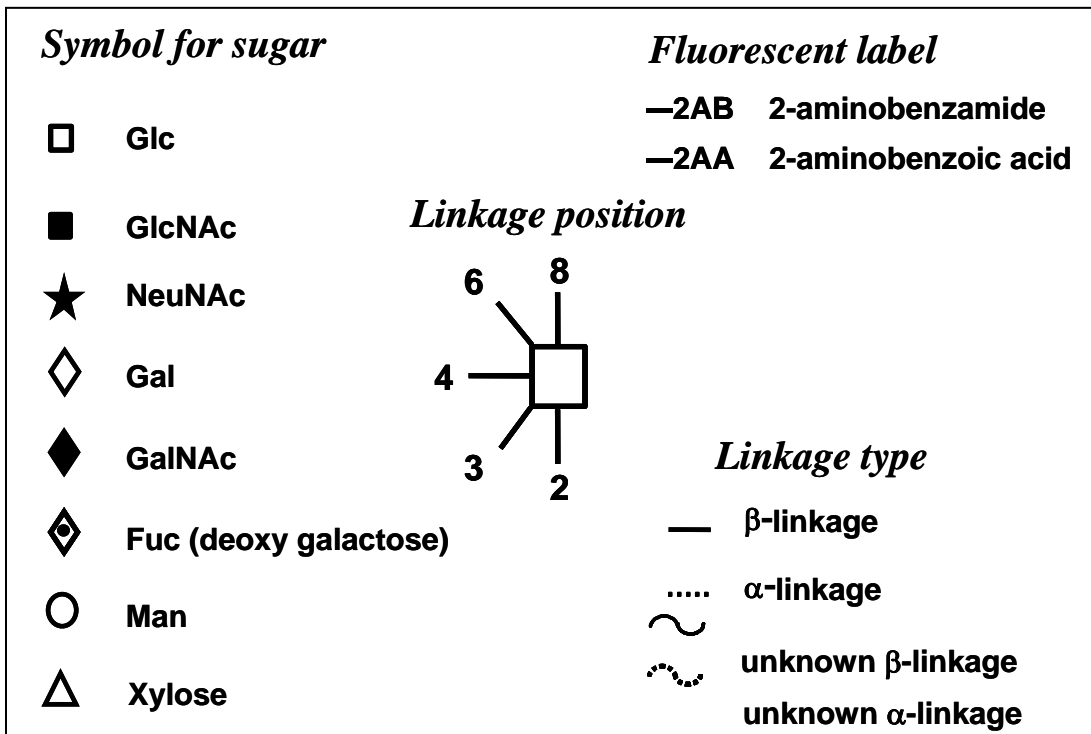
Gradient:

Time (min)	%B
0.0	78.0
1.5	78.0
24.8	58.0
25.8	40.0
25.9	78.0
31.0	78.0

Detector: Dionex FLD-3000

Excitation wavelength: 250 nm

Emission wavelength: 428 nm



**Figure 2:** GlycoBase glycan structure key.