



Ludger

Certificate of Analysis

LudgerPure™ 2AA Labeled A1F Glycan

Cat. #: CAA-A1F-01

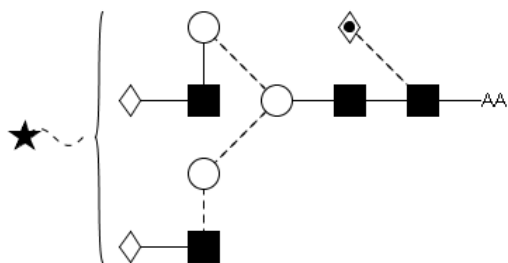
Batch: B238-03

Size: approx. 100 pmol

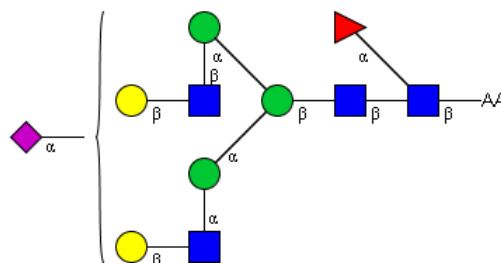
Alternative Names

FA2G2S1 – G1F

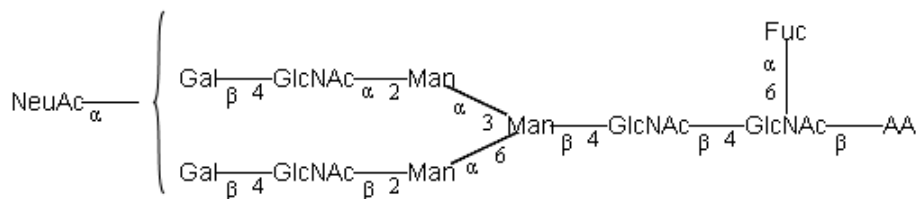
Structure



Oxford Notation



CFG Notation



Text Notation

Purity: > 90% 2AA labeled A1F glycan, as assessed by HPLC - see Fig 1.

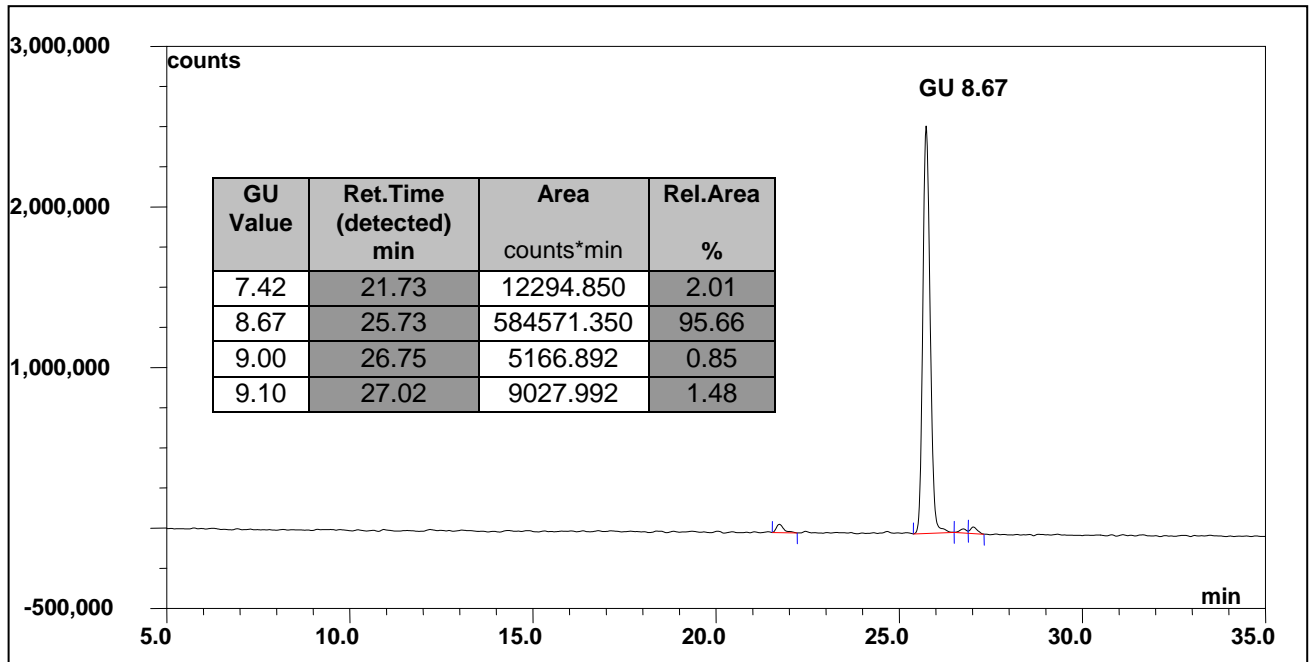


Figure 1 : LudgerSepN2 HPLC profile of 2AA labeled A1F glycan (Cat. #: CAA-A1F-01, Batch B238-03).

**A1F glycan structure identified by MALDI, MS & HPLC (GU value comparison to GlycoBase). This structure is drawn according to the scheme developed by Oxford-Dublin Glycobiology Laboratory (see Fig 2).*

2-AA A1F peak seen above, eluted at 25.7 minutes, under the following conditions:

HPLC Running Conditions:

Column: Waters BEH Glycan column (1.7µm, 2.1 x 150mm).

Flow: 0.25-0.50 mL/min.

Temperature: 60 °C

Solvent A: 50 mM ammonium formate pH 4.4 Solvent B: 100 % acetonitrile

Gradient:

- 0 min – 75% B, flow 0.5mL/min
- 38.5 min – 55.9% B, flow 0.5mL/min
- 40.5 min – 0% B, flow 0.25mL/min
- 42.5 min – 0% B, flow 0.25mL/min
- 44.5 min – 78% B, flow 0.25mL/min
- 50.5 min – 78% B, flow 0.25mL/min
- 51.5 min – 78% B, flow 0.5mL/min
- 55.0 min – 78% B, flow 0.5mL/min

Detector: Dionex FLD-3000

Excitation wavelength: 330 nm

Emission wavelength: 420 nm

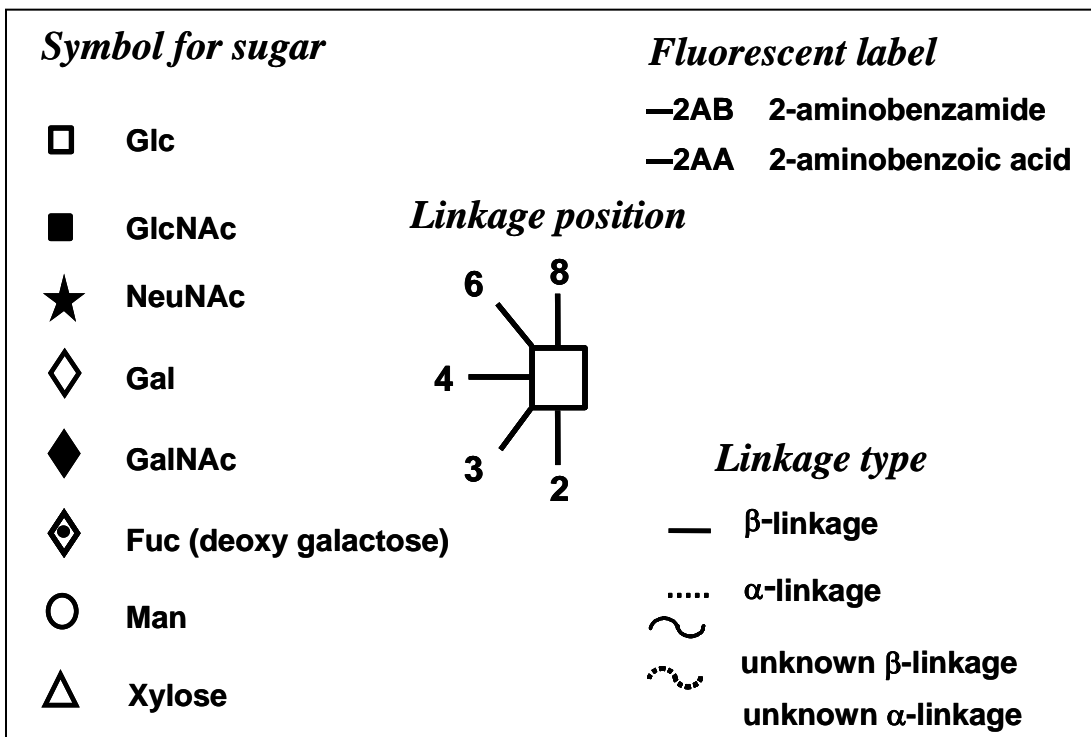


Figure 2 : GlycoBase glycan structure key.