



Ludger

# LudgerSep™ C2 Anion Exchange HPLC Column for Glycan Analysis

## Instruction Guide

### **Ludger Ltd**

Culham Science Centre

Abingdon

Oxfordshire OX14 3EB

United Kingdom

Tel: +44 870 085 7011

Fax: +44 870 163 4620

Email: [glycoprofilng@ludger.com](mailto:glycoprofilng@ludger.com)

**[www.ludger.com](http://www.ludger.com)**

# Contents

---

	<b>Pages</b>
<b>LudgerSep™ C2 Glycan Analysis HPLC Column - Specifications</b>	<b>3</b>
<b>HPLC System Requirements</b>	<b>5</b>
<b>Installation</b>	<b>5</b>
<b>Column Preconditioning</b>	<b>6</b>
<b>Column Cleaning, Regeneration and Storage</b>	<b>6</b>
<b>Sample Preparation</b>	<b>7</b>
<b>Charge Mode Analysis of Anionic and Neutral Glycans</b>	<b>8</b>
<b>Warranties and Liabilities</b>	<b>10</b>
<b>Document Revision Number</b>	<b>10</b>
<b>Appendix 1: Troubleshooting Guide</b>	<b>11</b>

---

## LudgerSep C2 Glycan Analysis HPLC Column - Specifications

---

**Application** Charged-based analysis and purification by HPLC of LudgerTag™ fluorophore and UV-chromophore labeled glycans.

**Description** The C2 HPLC column contains particles with a macroporous polymeric anion exchange coating optimized for anion exchange chromatography of complex glycan mixtures.

**Particles** 8 µm polystyrene divinyl benzene with a stable quaternized polyethylene imine coating

Column Size	Cat #	Diameter x Length	Column Volume
	LS-C2-4.6x50	4.6 x 50 mm	0.83 ml
	LS-C2-4.6x150	4.6 x 150 mm	2.49 ml

**Column Tube** Stainless steel

**Flow Rates** Typical flow rates = 0.3 – 2.0 ml/min.  
Maximum flow rate = 4 ml/min

**Pressure** Pressure should not exceed 300psi (207bar)

**pH Range** 1 – 13

**Temperature** Typical operating temperature = 30 °C, but increasing the temperature may improve resolution for some samples.  
Maximum temperature range = 10 - 60 °C.

**Solvents** Typical solvent systems for glycan analysis include gradients of aqueous buffers containing acetonitrile and either ammonium formate, ammonium acetate, or sodium acetate salts.  
Avoid strong oxidants and anionic detergents.

**Column Protection** Filter all solvents to 0.2 µm and degas using either helium sparging or vacuum degassing.  
Filter all samples using a 0.2 µm filter membrane before loading onto the column.  
Install a good quality in-line filter between the sample injector and the column.  
Please call us for advice on the most suitable sample and in-line filters to use.

- Amount of Sample** The maximum amount of glycan sample that can be loaded on the column depends on the number and type of glycan components as well as the nature of any non-glycan material. The typical range for successful analytical runs is 1 pmol - 1 nmol per sample peak and up to 200 nmol of total glycans.
- Suitable Samples** Suitable samples include glycans labelled with the following LudgerTag labels :  
2-AA (2-aminobenzoic acid),  
2-AB (2-aminobenzamide exchange)
- Sample Preparation** Filter samples to 0.2 µm then dry using a centrifugal evaporator.  
Re-dissolve in 5 - 50 µl of the starting buffer (i.e. the solvent mixture used at the very start of the HPLC gradient) then inject.
- Sample Detection** Either fluorescence or UV-absorbance depending on the dye used (see the appropriate LudgerTag instruction guide).
- Handling:** Ensure that any glass, plasticware or solvents used are free of glycosidases and environmental carbohydrates. Use powder-free gloves for all sample handling procedures and avoid contamination with environmental carbohydrate.
- Safety:** Please read the Material Safety Data Sheets (MSDS's) for all chemicals used. All processes involving labelling reagents should be performed using appropriate personal safety protection - eyeglasses, chemically resistant gloves (e.g. nitrile), etc. - and where appropriate in a laboratory fume cupboard

For research use only. Not for human or drug use

## HPLC System Requirements

---

LudgerSep C2 columns can be used with any HPLC pumping system capable of delivering accurate gradients at a flow rate of 0.3 to 2.0 ml/min. In general, systems which mix eluants at high pressure (after the pump head) have lower dead volumes and supply more accurate gradients that are appropriate at the flow rate needed for LudgerSep columns. Low dead volume injectors should be used (Rheodyne 7125 / 9125 or similar are recommended). The loop size to be used depends on the separation mode and amount of sample. For analytical runs it is desirable to minimise the sample volume and, typically, a 10 µl loop is used with sample injection volumes of 1 to 5 µl (partial fill) or > 10 µl (complete fill). For charge mode separations, generally, anionic glycans which are retained by the column (and are therefore effectively concentrated on the column) are reasonably tolerant of larger injection volumes whereas non-anionic glycans are not retained by the column matrix and will elute in a volume proportional to the injection volume.

A fluorescence detector is required ( $\lambda_{\text{ex}} = 360 \text{ nm}$ ,  $\lambda_{\text{em}} = 425 \text{ nm}$ ) for LudgerTag 2-AB or 2-AA labelled oligosaccharides. This could be either a filter or monochromator type. Fluorescence filters for OPA-peptide analysis work well and, typically, with these glycan peaks eluting from the LudgerSep C2 column containing 2 - 5 pmol of 2-AB or 2-AA labelled glycans can be detected with good signal-to-noise.

LudgerTag 2-AB and 2-AA labelled glycans can also be detected using UV (254 nm) with an approximately 10 to 100 fold reduction in sensitivity compared to fluorescence. Unlabelled oligosaccharides, particularly those bearing N-acyl amino groups, can be detected at 190 - 210 nm. down to the 1 nmol level. However, the absorption of the buffers and solvents becomes a problem when using UV detection, especially at short wavelengths.

## Installation

---

During column installation we recommend that :

- You should connect the LudgerSep C2 column to your HPLC system using standard 1/16" OD tubing and Valco compatible fittings in either stainless steel or PEEK (polyetheretherketone). Hand-tight PEEK fittings and tubing (0.17 mm / 0.007" ID) are recommended for ease of connection and to minimise damage to the column threads. Flow direction is indicated by an arrow on the column label.
- Keep the lengths of tubing between the injector to column and column to detector as short as possible to minimise dispersion effects.
- Install an in-line filter with minimal dead volume either immediately before the injector or between the injector and the head of the LudgerSep C2 column to prevent damage to the column by particles.
- Before analysing any samples, the newly installed column should be conditioned using the protocol described below.

## Column Preconditioning

---

The following preconditioning steps are recommended prior to use of the column :

Flush the column sequentially at a flow rate of 1.0 ml/min with the following eluants in order :

- Low ionic strength component of buffer A, for example 0.01M Tris HCl, pH 8.0, for 5 minutes
- High ionic strength component of buffer B, for example 0.01 M Tris HCl, 0.5 M NaCl, pH 8.0. Continue with this eluent until a stable baseline is achieved at the required sensitivity.
- Equilibrate with buffer A for 5 minutes.
- Equilibrate with starting buffer.

## Column Cleaning, Regeneration and Storage

---

After heavy use, your LudgerSep C2 column may become contaminated with strongly adsorbed sample constituents that will lead to a loss in column performance.

- If the contamination is light, clean the column following the protocol in the 'Column Preconditioning' section above. Afterwards, equilibrate in the appropriate starting buffer and run a charge mode gradient without injecting a sample to check the baseline.
- If more rigorous cleaning is required, wash with 0.1 M acid, e.g. acetic or hydrochloric and 0.1M base e.g. sodium hydroxide.
- If the contamination is due to small hydrophobic molecules e.g. fats, detergents and peptides, then the matrix should be washed with an organic alcohol e.g. isopropanol.
- The addition of 0.1% trifluoroacetic acid may be advantageous.
- Take the column through two complete LudgerSep C2 charge mode cycles without any sample injected.
- Column cleaning is most effective at a low flow rate (e.g. 0.2 ml / min).
- For long-term storage, the column should be washed with 1M solution chloride.
- After flushing with water the storage buffer of approximately 0.1 M Na<sub>2</sub>SO<sub>4</sub> containing 0.2% sodium azide can be introduced. Keep at room temperature.

## Sample Preparation

---

Samples intended for charge mode analysis on LudgerSep C2 columns must be free of salt or anionic detergent and free of any particulates.

Anionic glycans cannot be desalted using a simple mixed-bed ion exchange resin since they will themselves be retained by the resin. Volatile salts can be removed by repetitive drying in a centrifugal evaporator using a high vacuum followed by dissolution in water (typically 50 - 100  $\mu$ l) until there is no visible salt residue. Alternatively, desalting can be achieved using a LudgerClean EB-type cartridge. If a LudgerClean EB cartridge is used then make sure that all of the trifluoroacetic acid (used as a trace additive for elution from the cartridge) is removed from the sample by repetitive drying and dissolution as described above. This is to ensure that any sialylated glycans are fully de-protonated prior to injection onto the column (see Appendix 1, section A.2).

Sialylated glycans can become desialylated if exposed to acidic conditions and elevated temperatures. Avoid desialylation with such samples by (a) minimising exposure to acid (if possible, keep the pH above 5), and (b) minimising exposure to temperatures greater than 25°C.

Particulates can be removed from samples using microcentrifuge filters with 0.2  $\mu$ m pore size membranes.

## Charge Mode Analysis of Anionic and Neutral Glycans

---

Picomole quantities of oligosaccharides may be analysed by fluorescent labelling with 2-aminobenzamide (2-AB) using the LudgerTag 2-AB Glycan Labelling Kit (Cat. No. LT-KAB-A2) or with 2-aminobenzoic (2-AA) using the LudgerTag 2-AA Glycan Labelling Kit (Cat # LT-KAA-A2), followed by LudgerSep C2 HPLC.

The outline of the procedure is as follows :

- The oligosaccharides are labelled by reductive amination with 2-AB or 2-AA.
- Excess labelling reagents are then removed using LudgerClean S cartridges.
- The labelled oligosaccharides are analysed by anion exchange HPLC on a LudgerSep™ C2 column with fluorescence detection.

The following protocols are intended as a guide to the conditions for using LudgerSep C2 columns. Always use HPLC grade buffer salts and solvents together with pure water. It is recommended that buffers are prepared from the appropriate acid and base, e.g. formic acid and ammonium hydroxide, as these are generally available in a purer grade than the corresponding salts. Buffer concentrations are always expressed in terms of the anion. Always titrate an accurately measured amount of acetic acid or formic acid (aq) with ammonium hydroxide to the desired pH value. Only mix separately measured volumes of acetonitrile with water or aqueous buffers - do not 'top-up' aqueous solutions with organic solvents (or vice versa). Lastly, it is important to thoroughly degas buffers before use. This can be achieved using sonication, sparging with helium, or vacuum degassing.

**Column:** LudgerSep C2 - 4.6 x 150 mm

**Solvents:** Solvent A = water      Solvent B = 200 mM sodium acetate

**Flow rate:** 1 ml/min.

<b>Gradient :</b>	time / min	% A	% B	Comments
	0	100	0	
	1	100	0	
	20	60	40	
	22	60	40	
	25	100	0	
	39	100	0	
	40	100	0	change flow rate to 0.05 ml/min

Note: Higher percentage solvent B may be required for glycans with three or more negative charges.

**Detection by fluorescence :**

$$\lambda_{\text{ex}} = 365 \text{ nm}, \lambda_{\text{em}} = 425 \text{ nm}$$

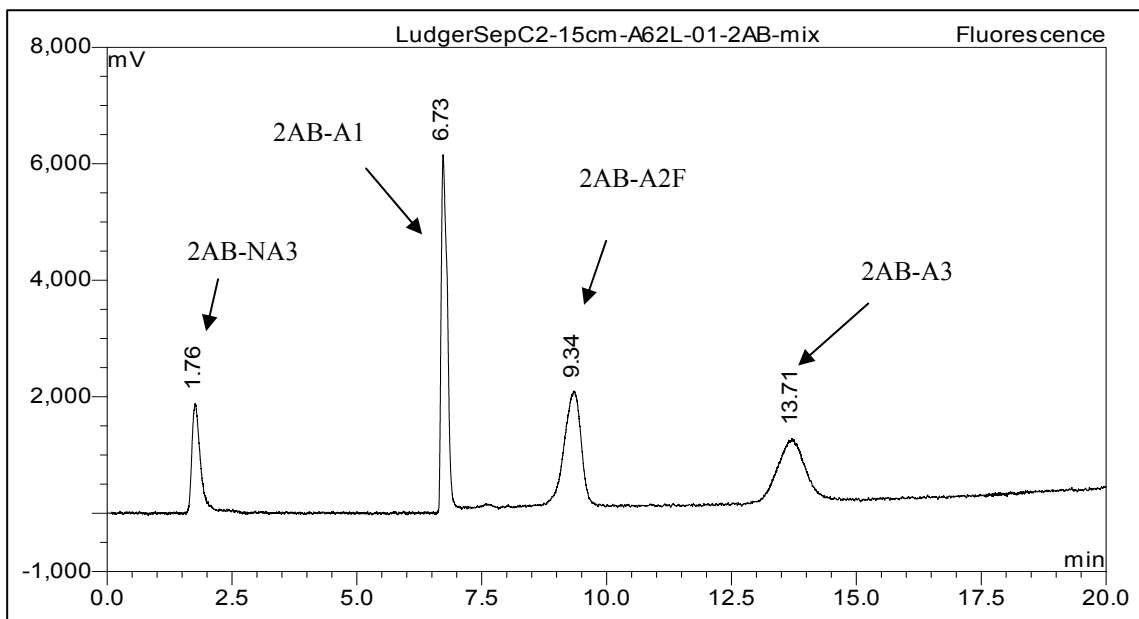


Figure 1: Separation of 2AB labelled glycan standards (picomolar concentration) LudgerSepC2 4.6 x 150 mm.

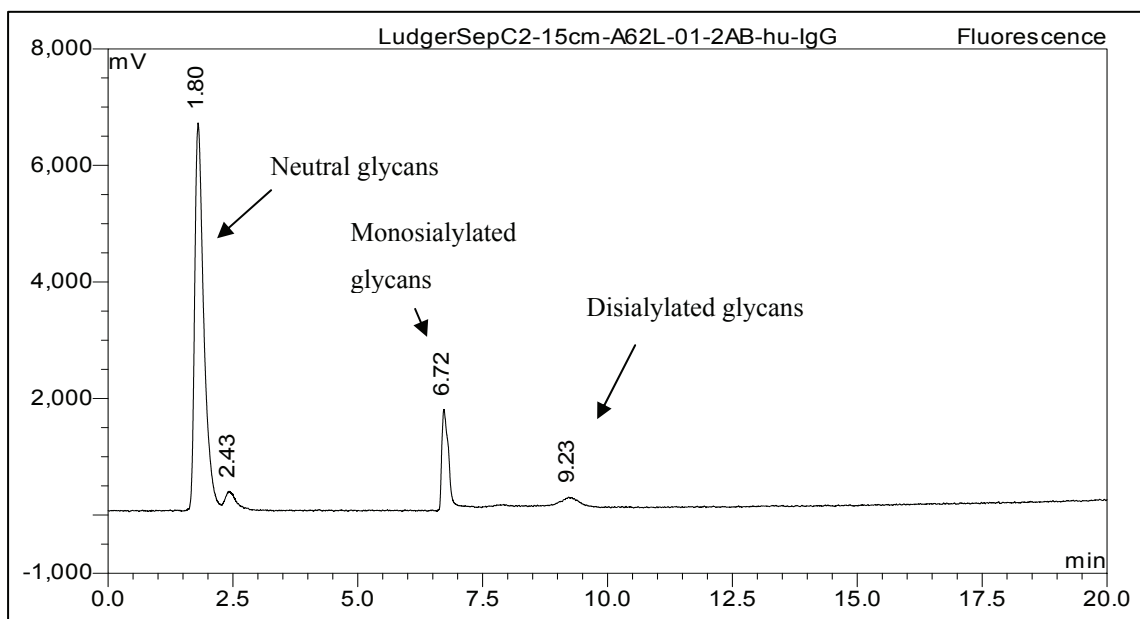


Figure 2: Separation of 2AB human IgG glycans (Cat. No. CAB-HUIGG-01). LudgerSepC2 - 4.6 x 150 mm.

## Warranties and Liabilities

---

Ludger warrants that the above product conforms to the attached analytical documents. Should the product fail for reasons other than through misuse Ludger will, at its option, replace free of charge or refund the purchase price. This warranty is exclusive and Ludger makes no other warranties, expressed or implied, including any implied conditions or warranties of merchantability or fitness for any particular purpose. Ludger shall not be liable for any incidental, consequential or contingent damages.

This product is intended for *in vitro* research only.

## Document Revision Number

---

Document # 'LS-C2-Guide', revision v 2.3

## Appendix 1 : Troubleshooting Guide

---

Charge mode analysis on LudgerSep C2 is a reasonably robust method. If problems do arise they can normally be corrected without difficulty. The following is a guide to the most likely problems, possible causes, and solutions.

### A. Samples are not retained on the column

**1. The glycans are non-anionic.** The glycans do not bear anionic groups or the anionic groups have been removed (e.g. the sample has been desialylated). Minimize desialylation by reducing exposure of the sample to acid conditions and elevated temperatures.

**2. The sialylated sugars are unionised.** Sialylated sugars will be unionised if kept in acidic solutions with  $\text{pH} < 3$ . In such cases, the carboxyl groups will not be deprotonated and will, therefore, be neutral. To overcome this, either adjust the pH to the range 7 - 8 with 50 mM ammonia solution or add an equal volume of 10 mM ammonia solution (aq) to the sample, dry down, then take up the sample in water. This should bring the pH back up to a range in which the sialylated groups are deprotonated. Alternatively, samples in solutions of volatile acids (e.g. trifluoroacetic acid) can be de-acidified by repetitive drying by centrifugal evaporation followed by dissolution in water until all traces of the acid have been removed. When doing this, please be careful to minimise desialylation by avoiding elevated temperatures (typically, the sample should be kept below 25°C unless buffered to  $\text{pH} > 7$ ).

**3. The column may not be fully equilibrated.** Ensure that the column is washed thoroughly in solvent A (20% acetonitrile (aq)) to remove all salts from the column before loading the sample.

**4. The sample contains salt that causes self-elution.** Ensure that the sample is loaded on in water or solvent A and that all traces of salt have been removed. Be careful when desalting the sample with a cation exchange resin in the  $\text{H}^+$  form - such treatment can reduce the pH to 3 or less, thereby rendering the carboxyl groups non-anionic. In such a case, de-acidify the sample as described in section A.2 above. An alternative to desalting is to simply dilute the sample with water before loading onto the column. This reduces the ionic strength of the sample and minimises the possibility of self-elution. However, the widths of peaks for non-retained (i.e. non-anionic glycans) will increase as the sample injection volume increases.

**5. The column is overloaded.** Inject a smaller amount of sample to see if retention is improved.

**6. The column is contaminated.** Clean the column using the methods described in the guide.

## B. Samples are retained and cannot be eluted from the column

**1. The glycans are poly-anionic.** The glycans bear many anionic groups and are retained so strongly that the salt gradient is insufficient to displace them from the column matrix. Try going up to a higher salt concentration (e.g. 1 mol dm<sup>-3</sup>) during the salt gradient. Beware of using very high salt concentrations since the acetonitrile will limit solubility of the salt.

**2. The glycans contain regions of significant hydrophobicity.** If the glycans bear very hydrophobic moieties (e.g. they are derivatized with large aromatic or alkyl groups) they may adhere to the column matrix via hydrophobic rather than purely electrostatic interactions. If this is the case, try increasing the percentages of acetonitrile in both solvents A and B but beware that the salt solubility decreases with increasing concentrations of organic solvent.



## Certificate of Analysis

---

### LudgerSep C2 Anion Exchange HPLC Glycan Analysis Column

Cat. # : LS-C2-4.6x50

Serial # : A84F-01

Size : 4.6 x 50 mm

---

This column conforms to the specifications given in Ludger document # LS-C2-GUIDE.

**Packed Solvent**      0.1M Na<sub>2</sub>SO<sub>4</sub> and 30% methanol

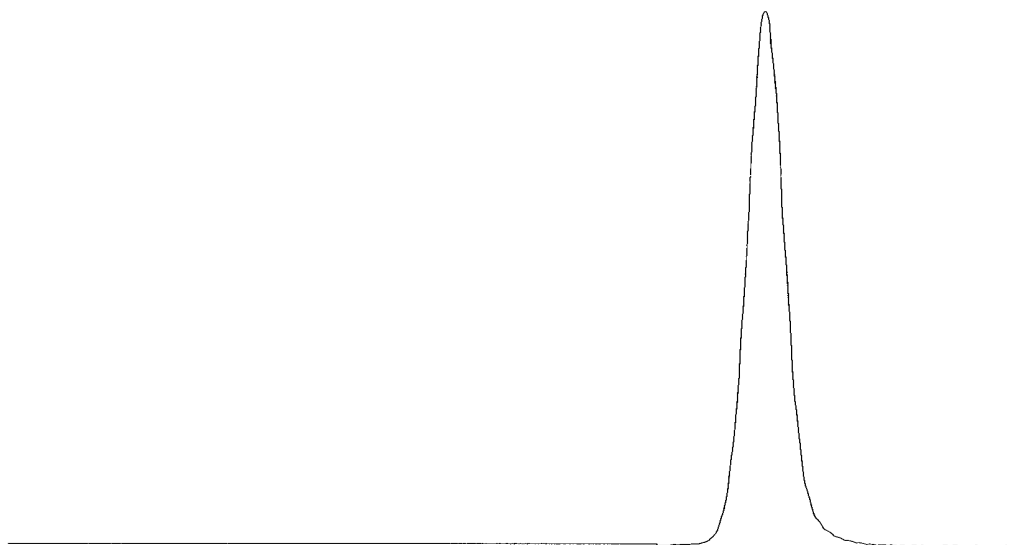
#### Test Analysis

**Flow Rate**              0.3 ml / min

**Eluent**                  0.1M Di-Sodium hydrogen orthophosphate dodecahydrate, 0.01M Tris  
(hydroxymethyl) aminomethane hydrochloride with pH adjusted to 7.0

**Sample**                  AMP

**Detection**              UV at 254 nm



Theoretical Plates = 31051 plates/ metre