



## Ludger

Minimise exposure to elevated temperatures or extremes of pH. High temperatures and low pH will cause desialylation. High pH will cause epimerisation of the reducing terminus GlcNAc.

**Safety:** This product is non-hazardous and has been purified from natural sources certified to be free of all hazardous material including pathogenic biological agents.

**For research use only. Not for human or drug use**

## Related Products

Cat # *	Description
CN-A1-x	A1 Glycan (monosialylated derivative of A2 glycan)
CN-NA2-x	NA2 Glycan (degalactosylated derivative of A2 glycan)
CN-NGA2-x	NGA2 Glycan (a substructure of NA2 glycan)
CN-M3N2-x	M3N2 Glycan (a substructure of NGA2 glycan)

\* where x denotes pack size

## Warranties and liabilities

Ludger warrants that the above product conforms to the attached analytical documents. Should the product fail for reasons other than through misuse Ludger will, at its option, replace free of charge or refund the purchase price. This warranty is exclusive and Ludger makes no other warrants, expressed or implied, including any implied conditions or warranties of merchantability or fitness for any particular purpose.

Ludger shall not be liable for any incidental, consequential or contingent damages.

This product is intended for *in vitro* research only.

Document # 'CN-A2-Guide', revision # v1.2



## Certificate of Analysis

---

### A2 Glycan

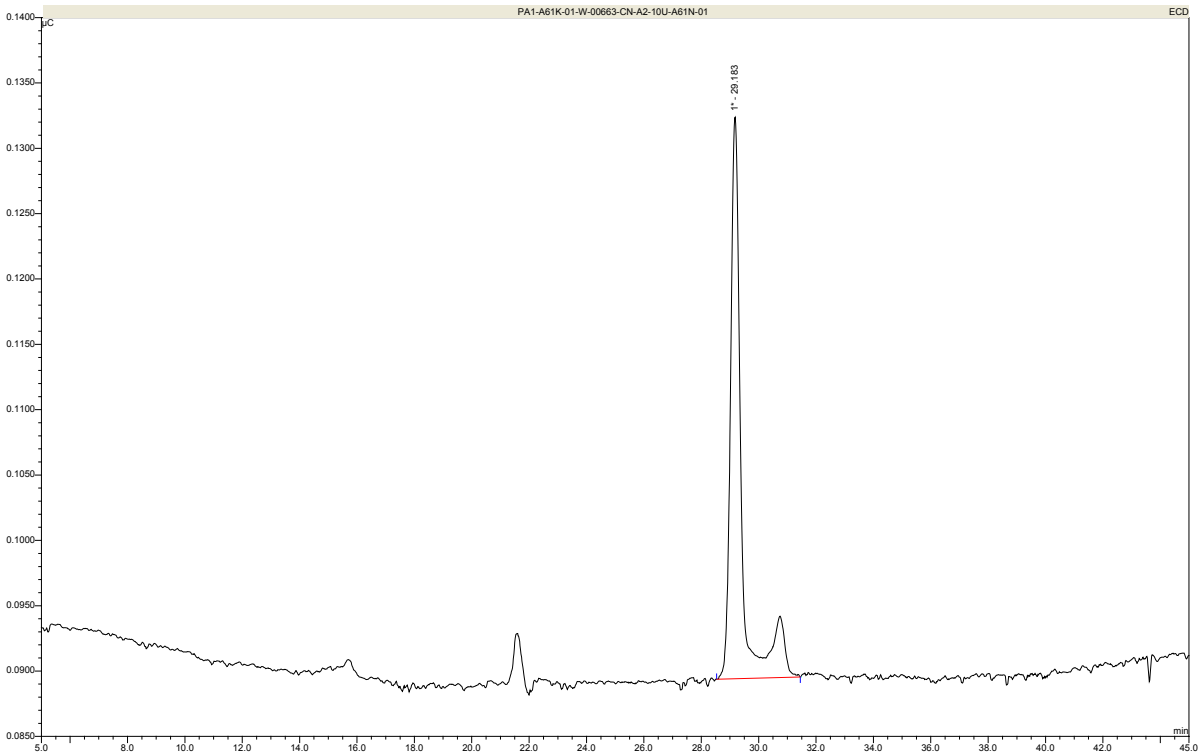
Cat. #: CN-A2-10U

Lot #: A61N-01

Size : 10 µg

---

**Purity:** > 90% pure as assessed by a combination of HPLC (see Fig 1) and <sup>1</sup>H-NMR (see Fig 2).



**Figure 1 : HPAE-PAD HPLC Profile of A2 Glycan (Cat. No.CN-A2-10U, Lot No. A61N-01)**

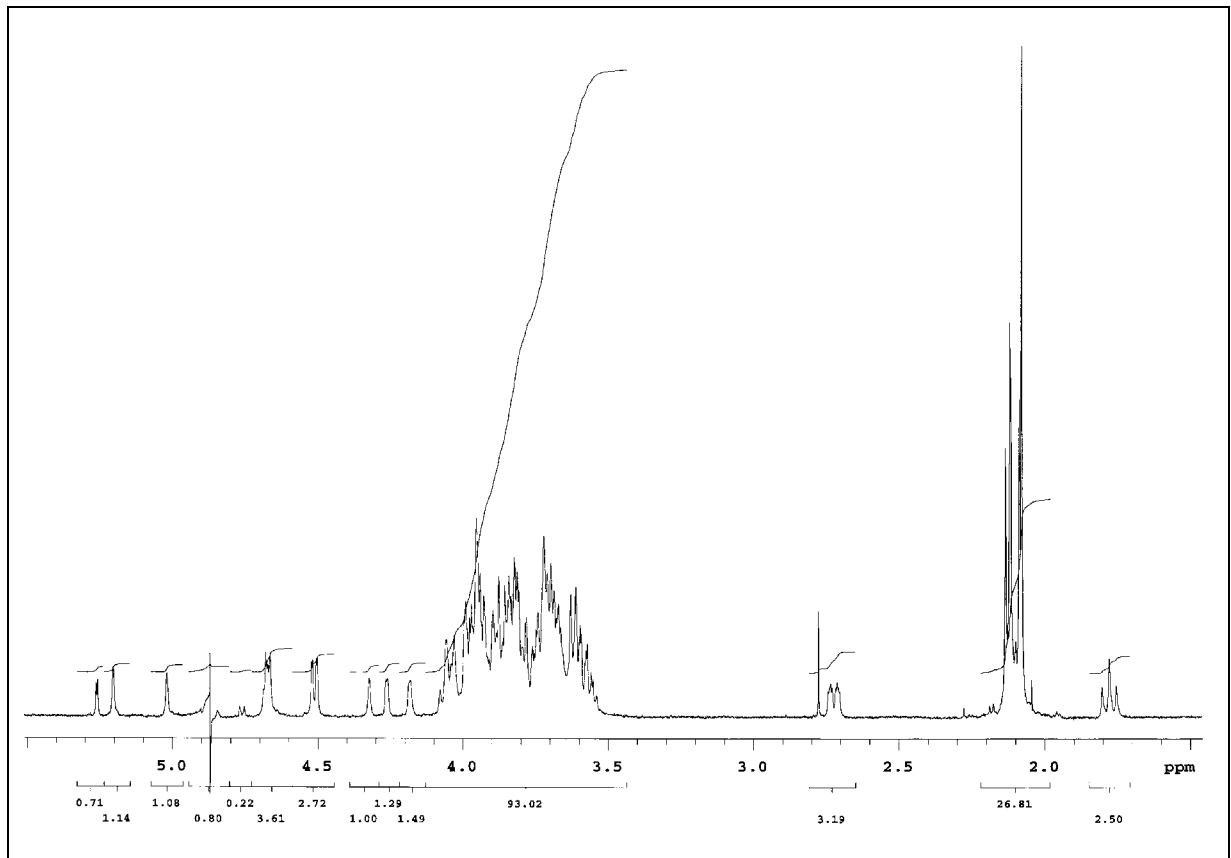


Figure 2 : 500 MHz  $^1\text{H}$ -NMR of A2 Glycan (Cat. No.CN-A2-10U, Lot No. A61N-01)



## Certificate of Analysis

---

### A2 Glycan

Cat. #: CN-A2-10U

Lot #: A84T-05

Size : 10 µg

---

**Purity:** > 90% pure as assessed by a combination of HPLC (see Fig 1)

**Figure 1 : HPAE-PAD HPLC Profile of A2 Glycan (Cat. No.CN-A2-10U, Lot No. A84T-05)**

