



## Certificate of Analysis

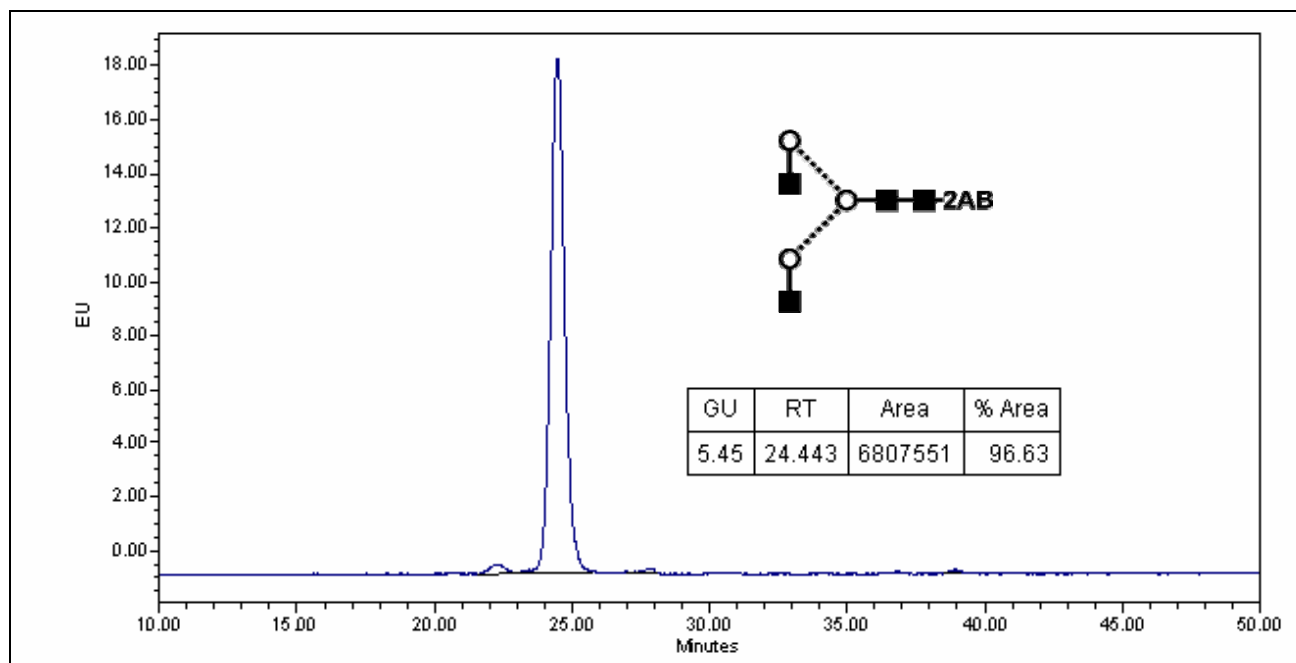
### LudgerPure™ 2AB Labeled NGA2 Glycan

Cat. #: CAB-NGA2-01

Lot #: B021-02

Size : approx. 100 pmol

**Purity:** > 90% 2AB labeled NGA2 glycan, as assessed by HPLC - see Fig 1.



**Figure 1** : LudgerSepN2 HPLC profile of 2AB labeled NGA2 glycan  
(Cat. #: CAB-NGA2-01, Lot No. B021-02).

*\*NGA2 glycan structure identified by MALDI MS & HPLC (GU value comparison to GlycoBase). This structure is drawn according to the scheme developed by Oxford-Dublin Glycobiology Laboratory (see Fig 2).*

**2-AB NGA2 peak seen above, eluted at 24.4 minutes, under the following conditions:**

**HPLC Running Conditions:**

Column: 2 x LudgerSep N2 Amide (Cat. #: LS-N2-2.0x150)

Flow: 0.18 ml/min.

Temperature: 35 °C

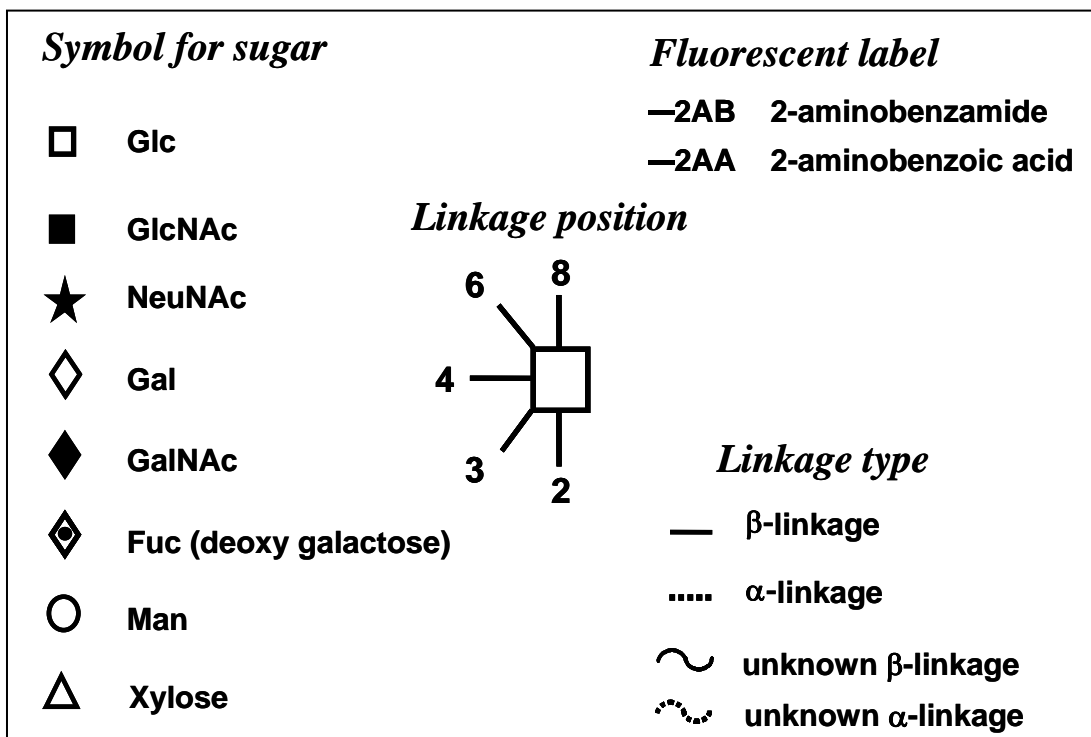
Solvent A: 50 mM ammonium formate pH 4.4    Solvent B: 100 % acetonitrile

Gradient:

- 0 min – 70 % B
- 46 min – 47 % B
- 46.5 min – 0 % B
- 51 min – 70% B
- 60 min – 70 % B
- 65 min -70 % B

Detector: Waters 2475    Excitation wavelength: 330 nm

Emission wavelength: 420 nm



**Figure 2 :** GlycoBase glycan structure key.