

## Certificate of Analysis

### LudgerPure™ 2AB Labeled NGA2F Glycan

Cat. #: CAB-NGA2F-01

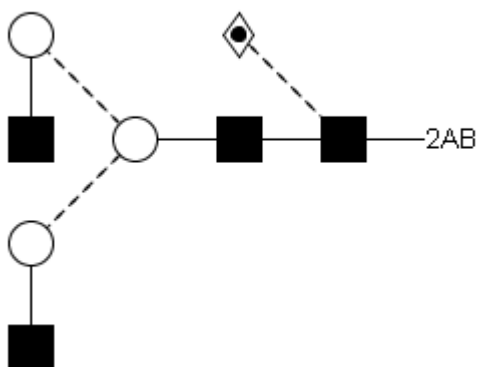
Batch: B17F-02

Size: approx. 100 pmol

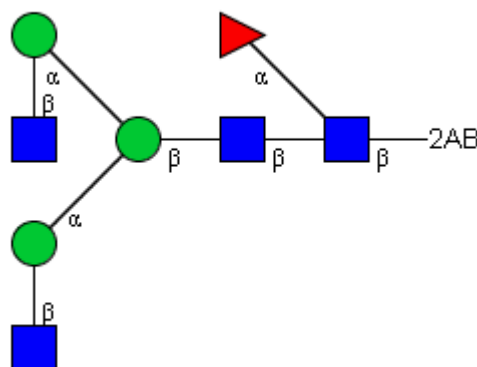
#### Alternative Names

FA2 – G0F

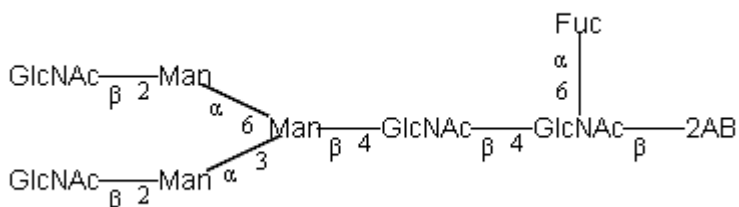
#### Structure



Oxford Notation

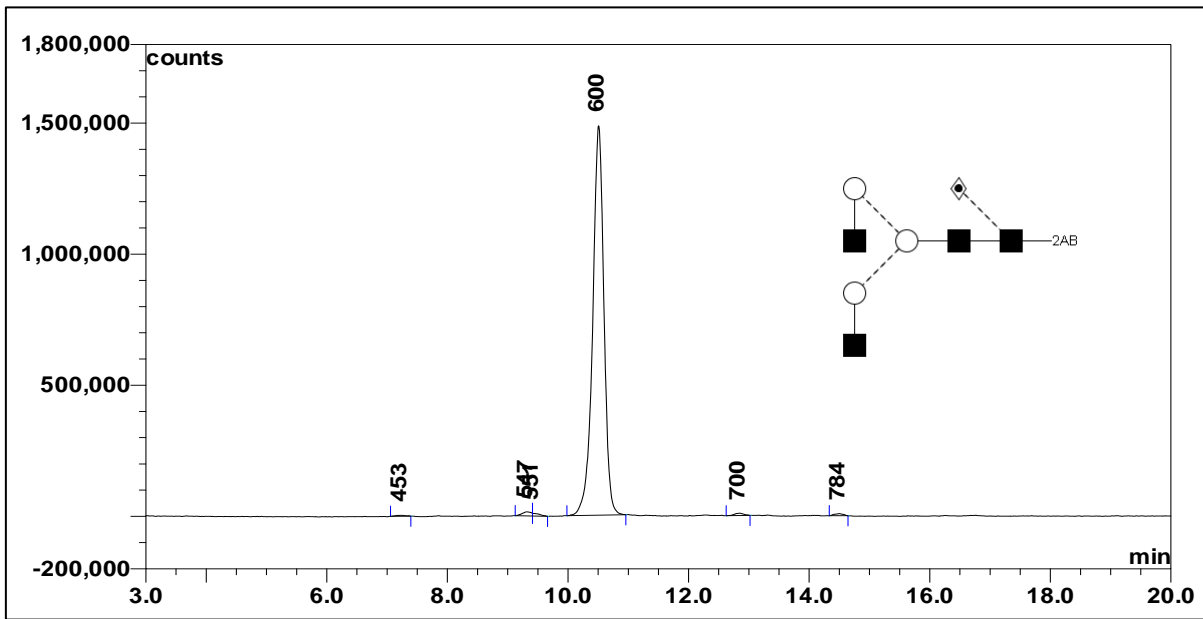


CFG Notation



Text Notation

**Purity:** > 90% 2AB labeled NGA2F glycan, as assessed by HPLC - see Fig 1.



**Figure 1:** LudgerSepN2 HPLC profile of 2AB labeled NGA2F glycan (Cat. #: CAB-NGA2F-01, Batch B17F-02).

*\*NGA2F glycan structure identified by MALDI, MS & HPLC (GU value comparison to GlycoBase). This structure is drawn according to the scheme developed by Oxford-Dublin Glycobiology Laboratory (see Fig 2).*

**2-AB NGA2F peak seen above, eluted at 10.51 minutes, under the following conditions:**

**HPLC Running Conditions:**

Column: LudgerSep N2 Amide (Cat. #: LS-N2-2.0x150)

Flow: 0.3 ml/min.

Temperature: 40 °C

Solvent A: 50 mM ammonium formate pH 4.4    Solvent B: 100 % acetonitrile

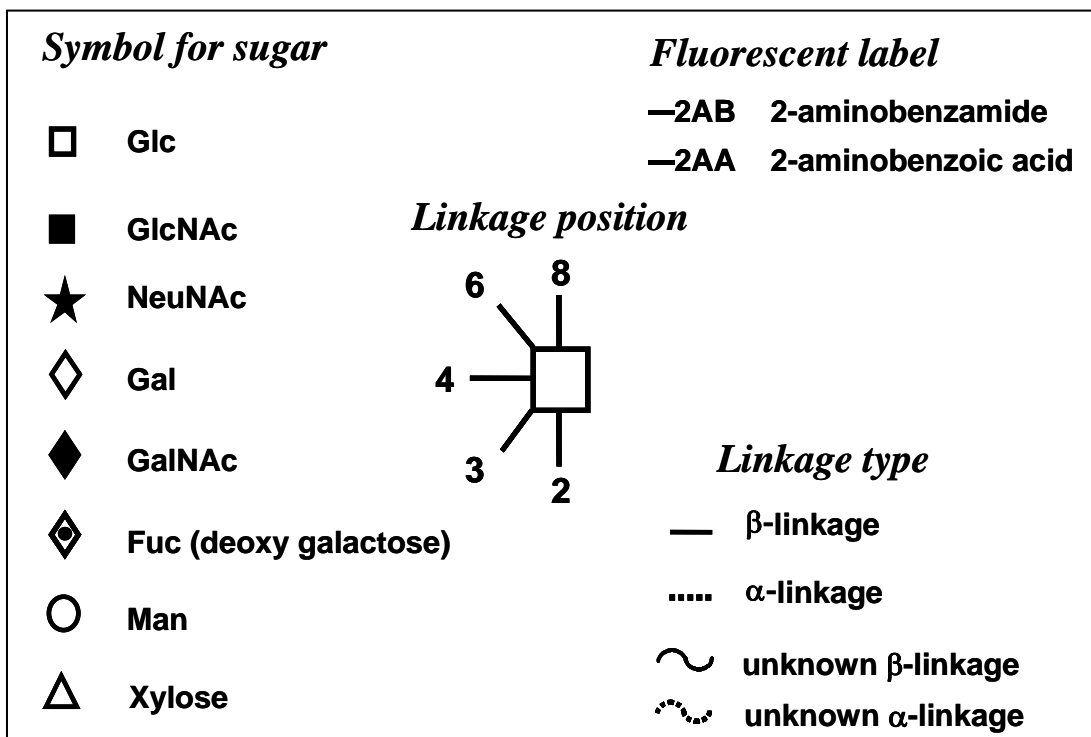
Gradient:

- 0 min – 65 % B
- 25 min – 40 % B
- 25.5 min – 0 % B
- 27.5 min – 0% B
- 29.5 min – 65 % B
- 35.1 min – 65 % B

Detector: Dionex FLD-3000

Excitation wavelength: 330 nm

Emission wavelength: 420 nm



**Figure 2:** GlycoBase glycan structure key.